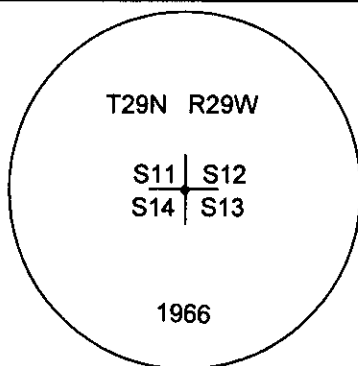
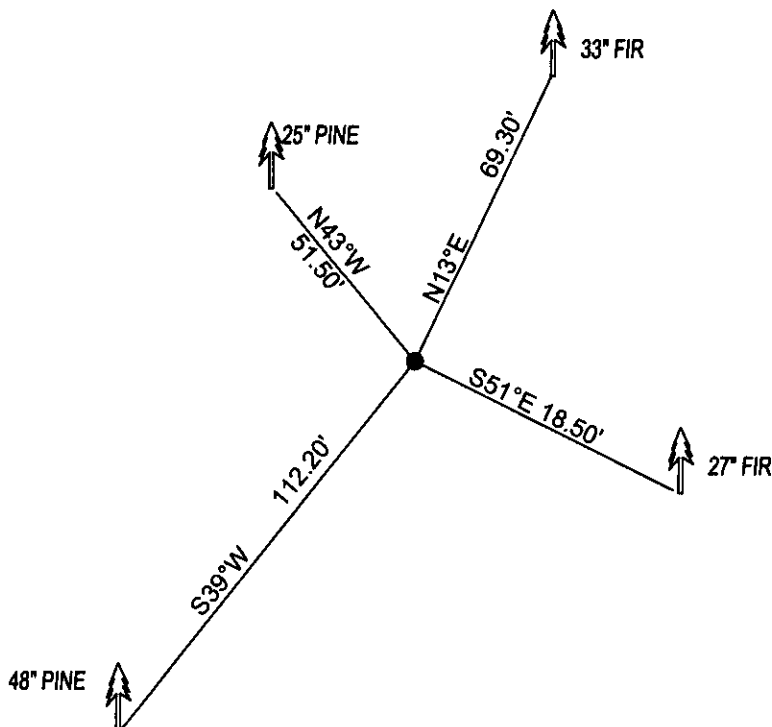


CERTIFIED CORNER RECORDATION

Corner NW CORNER SEC. 13 T. 29N R. 29W P.M.M. County LINCOLN

FOUND: 2 1/2" BRASS CAP STAMPED AS SHOWN, FROM WHICH:
33" FIR BEARS N13°E 69.30' SCRIBE OVERGROWN.
27" FIR BEARS S51°E 18.50' SCRIBE OVERGROWN.
48" PINE BEARS S39°W 112.20' SCRIBE OVERGROWN.
25" PINE BEARS N43°W 57.50' WITH SOME SCRIBE.

MAINTENANCE: REMOVED BRUSH FROM CORNER AREA. SET 5 FOOT STEEL POSTS 2 FEET EAST OF CORNER
ATTACHED BT TAGS AND PAINTED A RED 6" BAND AND SCRIBE RED



SKETCH OF CORNER

CERTIFICATION

I, DAN CROFT
certify the information shown herein is true and correct.

Signature Ground Party Chief

I, MARC J. CARSTENS
certify that this Corner Record correctly represents work
performed by me or under my direction in compliance with
the "Corner Recordation Act" (70/22-101, et seq., M.C.A.)

Signature of Surveyor & Seal



Date: 09-2011 Reg No. 5940 LS

Employer: CARSTENS LAND SURVEYING

Office of Clerk and Recorder, County of LINCOLN This "corner

record" was filed for record on 234773 BOOK: CCR CC&R'S PAGE: 11909 Pages: 1

STATE OF MONTANA LINCOLN COUNTY

was noted on the cross-index RECORDED: 09/20/2011 10:05 KOI: CC&R'S

book No. TAMMY D. LAUER CLERK AND RECORDER

FEE: \$0.00

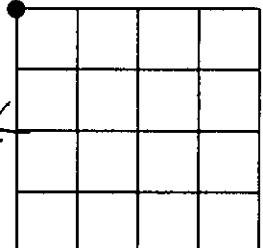
BY: Leanne K. Deputy

TO: CARSTENS LAND SURVEYING P.O. BOX 1374, POLSON, MONTANA

Cross Index No. J-21 T. 29N R. 29W PMM

Adopted July 1, 1981, Montana Board of Professional Engineers & Land Surveyors

Sec. 13



• corner this sheet