

CERTIFIED CORNER RECORDATION

Corner SW Cor. S23 T. 29 N. R. 29 W. P.M.M. LINCOLN County

I. Record: 1898 original GLO survey by P. Bickel, set a slate stone 24x9x4 ins., 18 ins. in the ground, marked with 2 notches on the S. and E. edges from which:

- A fir, 22 ins. diam., bears N.30°50'E., 98 lks. dist. (64.68 ft.), mkd. T29N R29W S23 BT.
- A fir, 24 ins. diam., bears S.30°E., 174 lks. dist. (114.84 ft.), mkd. T29N R29W S26 BT.
- A fir, 16 ins. diam., bears S.12°20'W., 135 lks. dist. (89.10 ft.), mkd. T29N R29W S27 BT.
- A fir, 18 ins. diam., bears N.34°20'W., 73 lks. dist. (48.18 ft.), mkd. T29N R29W S22 BT.

1966 BLM Remoumentation: Set an 3 1/4 ins. diam. brass tablet flush with surface of original slate stone mkd. as shown below from which:

- A fir, 20 ins. diam., bears N.30°50'E., 98 lks. dist., (64.68 ft.) with overgrown blaze.
- A pine, 23 ins. diam., bears S.30°E., 174 lks. dist., (114.84 ft.) with overgrown blaze.
- A fir, 18 ins. diam., bears S.12°20'W., 135 lks. dist., (89.10 ft.) with overgrown blaze.
- A fir, 13 ins. diam., bears N.34°W., 119 lks. dist., (78.54 ft.) mkd. T29N R29W S22 BT.

II. Found: A 3 1/4 ins. diam. BLM brass table flush with the ground, from which:

- A fir, 24 ins. diam., bears N.39°E., 64.70 ft. dist., with overgrown face.
- A pine, 30 ins. diam., bears S.30°E., 114.40 ft. dist., with visible scribes.
- A fir snag, 20 ins. diam., bears S.26°W., 89.10 ft. dist., with overgrown face.
- A fir, 16 ins. diam., bears N.28°W., 78.50 ft. dist., with visible scribes.

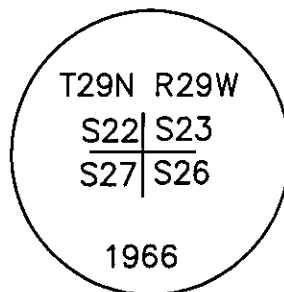
III. Perpetuation: Establish one new bearing tree described below:

A fir, 20 ins. diam., bears S.52°W., 44.05 ft. dist., mkd. T29N R29W S27 BT.

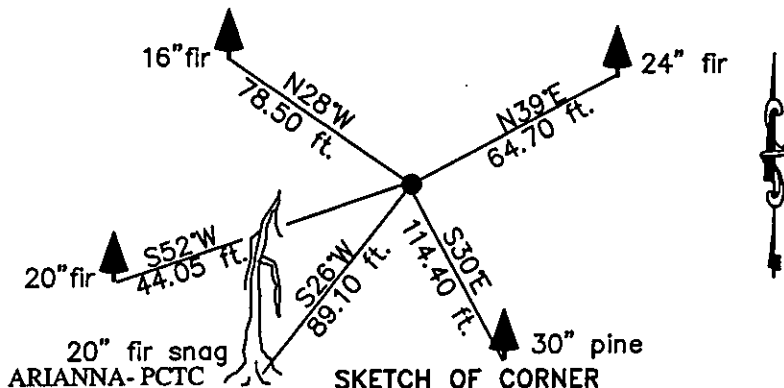
Painted faces and 6 in. wide red bands to all bearing trees and attached Bearing tree and Land Survey Monument signs.

Magnetic declination: 18° East

Equipment used: Hand compass and loggers tape



Kootenai Surveyors Inc., 314 California Av., Libby, MT. 59923 (406) 293-4354



CERTIFICATION

1. Kelly Rooney
I certify the information shown herein is true and correct.
Signature of Ground Party Chief

2. Alvah F. Hughes
I certify that this Corner Record correctly represents work performed by me or under my direction in compliance with the "Corner Recordation Act" (70-22-101, et seq., M.S.A.)
Signature of Surveyor & Seal

Date: 11/3/2008 Reg. No. 7322-LS
Employer: Kootenai Surveyors Inc.

Office of Clerk and Recorder, County of Lincoln This "corner

record" was filed for re 215768 BOOK: CCR CC&R'S PAGE: 11290 Pages: 1

was noted on the cross STATE OF MONTANA LINCOLN COUNTY

book No. RECORDED: 12/01/2008 2:30 KOI: CC&R'S

TAMMY D. LAUER CLERK AND RECORDER

FEE: \$0.00

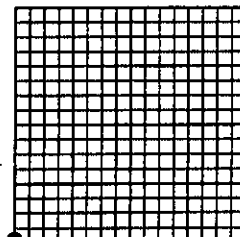
BY:

TO: KOOTENAI SURVEYORS INC. P.O. BOX 393, LIBBY, MT 59923

Cross Index No. R 17 T. 29N R. 29W P.M., MT

Adopted July 1, 1981, Montana Board of Professional Engineers & Land Surveyors

Sec.23



• corner this sheet