

# CERTIFIED CORNER RECORDATION

Corner SW Cor. S23 T. 29 N. R. 29 W. P.M.M. LINCOLN County

I. Record: 1898 original GLO survey by P. Bickel, set a slate stone 24x9x4 ins., 18 ins. in the ground, marked with 2 notches on the S. and E. edges from which:

A fir, 22 ins. diam., bears N.30°50'E., 98 lks. dist. (64.68 ft.), mkd. T29N R29W S23 BT.  
 A fir, 24 ins. diam., bears S.30°E., 174 lks. dist. (114.84 ft.), mkd. T29N R29W S26 BT.  
 A fir, 16 ins. diam., bears S.12°20'W., 135 lks. dist. (89.10 ft.), mkd. T29N R29W S27 BT.  
 A fir, 18 ins. diam., bears N.34°20'W., 73 lks. dist. (48.18 ft.), mkd. T29N R29W S22 BT.

1966 BLM Remoumentation: Set an 3 1/4 ins. diam. brass tablet flush with surface of original slate stone mkd. as shown below from which:

A fir, 20 ins. diam., bears N.30°50'E., 98 lks. dist., (64.68 ft.) with overgrown blaze.  
 A pine, 23 ins. diam., bears S.30°E., 174 lks. dist., (114.84 ft.) with overgrown blaze.  
 A fir, 18 ins. diam., bears S.12°20'W., 135 lks. dist., (89.10 ft.) with overgrown blaze.  
 A fir, 13 ins. diam., bears N.34°W., 119 lks. dist., (78.54 ft.) mkd. T29N R29W S22 BT.

II. Found: A 3 1/4 ins. diam. BLM brass table flush with the ground, from which:

A fir, 24 ins. diam., bears N.39°E., 64.70 ft. dist., with overgrown face.  
 A pine, 30 ins. diam., bears S.30°E., 114.40 ft. dist., with visible scribes.  
 A fir snag, 20 ins. diam., bears S.26°W., 89.10 ft. dist., with overgrown face.  
 A fir, 16 ins. diam., bears N.28°W., 78.50 ft. dist., with visible scribes.

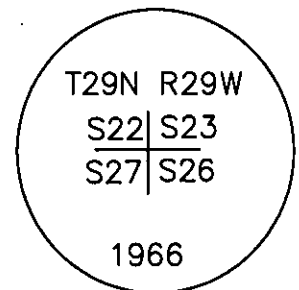
III. Perpetuation: Establish one new bearing tree described below:

A fir, 20 ins. diam., bears S.52°W., 44.05 ft. dist., mkd. T29N R29W S27 BT.

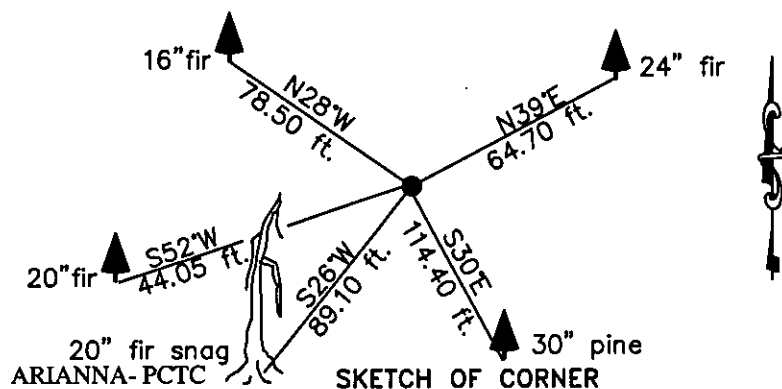
Painted faces and 6 in. wide red bands to all bearing trees and attached Bearing tree and Land Survey Monument signs.

Magnetic declination: 18° East

Equipment used: Hand compass and loggers tape



Kootenai Surveyors Inc., 314 California Av., Libby, MT. 59923 (406) 293-4354



CERTIFICATION  
 I, Kelly Rooney  
 certify the information shown herein is true and correct.  
 Signature Ground Party Chief  
 I, Alvah F. Hughes  
 certify that this Corner Record correctly represents work performed by me or under my direction in compliance with the "Corner Recordation Act" (70-22-101, et seq.)  
 Signature of Surveyor & Seal  
 Date: 11/3/2008 Reg. No. 7322-LS  
 Employer: Kootenai Surveyors Inc.

Office of Clerk and Recorder, County of Lincoln This "corner

record" was filed. 215766 BOOK: CCR CC&R'S PAGE: 11288 Pages: 1

was noted on the STATE OF MONTANA LINCOLN COUNTY  
 RECORDED: 12/01/2008 2:24 KOI: CC&R'S

book No. TAMMY D. LAUER CLERK AND RECORDER

FEE: \$0.00

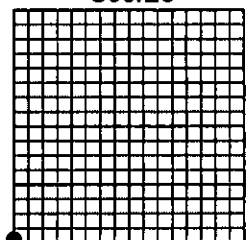
BY: [Signature]

TO: KOOTENAI SURVEYORS INC. P.O. BOX 393, LIBBY, MT 59923

Cross Index No. R 17 T. 29N R. 29W P.M., MT

Adopted July 1, 1981, Montana Board of Professional Engineers & Land Surveyors

Sec.23



• corner this sheet