

CERTIFIED CORNER RECORDATION

Corner SE Cor. S23 T. 29 N. R. 29 W. P.M.M. LINCOLN County

I. Record: 1898 original GLO survey by P. Bickel, set a slate stone 22x6x4 ins., 17 ins. in the ground, marked with 2 notches on the S. and 1 notch on E. edge from which:

- A pine, 18 ins. diam., bears N. 52°50' E. 32 lks. dist. (21.12 ft.), mkd. T29N R29W S24 BT.
- A fir, 22 ins. diam., bears S. 23°30' E. 31 lks. dist. (20.46 ft.), mkd. T29N R29W S25 BT.
- A fir, 20 ins. diam., bears S. 31°20' W. 32 lks. dist. (21.12 ft.), mkd. T29N R29W S26 BT.
- A pine, 24 ins. diam., bears N. 32° W. 37 lks. dist. (24.42 ft.), mkd. T29N R29W S23 BT.

1964 BLM Remoumentation: Set an iron post, 30 ins. long, 2 1/2 ins. diam., 27 ins. in the ground, with brass cap mkd. as shown below from which:

- A pine, 22 ins. diam., bears N. 53° E., 12 lks. dist., (21.12 ft.) with overgrown blaze.
- A pine, 30 ins. diam., bears N. 32° W., 37 lks. dist., (24.42 ft.) with overgrown blaze.
- A fir, 5 ins. diam., bears N. 20°30' E., 89 lks. dist., (58.74 ft.) mkd. T29N R29W S24 BT.
- A fir, 5 ins. diam., bears S. 58°30' E., 59 lks. dist., (38.94 ft.) mkd. T29N R29W S25 BT.
- A fir, 5 ins. diam., bears S. 23° W., 68 lks. dist., (44.88 ft.) mkd. T29N R29W S26 BT.
- A fir, 5 ins. diam., bears N. 64° W., 60 lks. dist., (39.60 ft.) mkd. T29N R29W S23 BT.

II. Found: A 2 1/2 ins. diam. iron pipe with a 3 1/4 ins. diam. BLM brass cap 4 ins. above ground and firmly set from which:

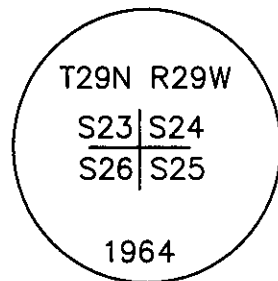
- A pine, 23 ins. diam., bears N. 53° E., 21.10 ft. dist., with overgrown blaze.
- A pine, 30 ins. diam., bears N. 32° W. 24.40 ft. dist. with overgrown blaze.
- A fir, 10 ins. diam., bears N. 20° E., 58.70 ft. dist., with visible scribes.
- A fir, 11 ins. diam., bears S. 58° E., 38.90 ft. dist., with visible scribes.
- A fir, 12 ins. diam., bears S. 23° W., 44.90 ft. dist., with visible scribes.
- A fir, 12 ins. diam., bears N. 64° W., 39.60 ft. dist., with visible scribes.

III. Perpetuation:

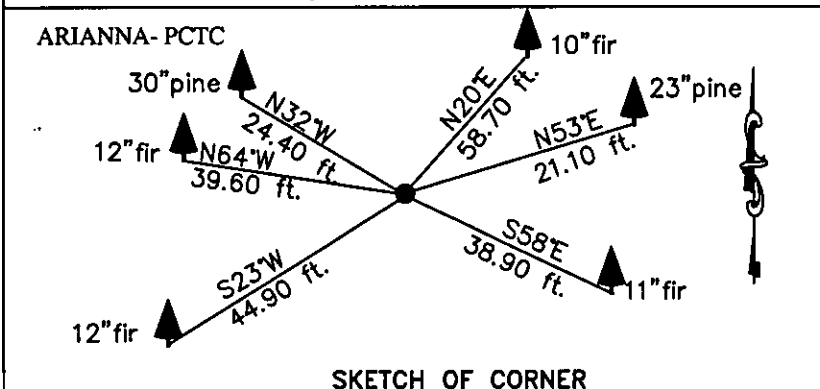
Painted faces and 6 in. wide red bands to all bearing trees and attached Bearing tree and Land Survey Monument signs.

Magnetic declination: 18° East

Equipment used: Hand compass and loggers tape



Kootenai Surveyors Inc., 314 California Av., Libby, MT. 59923 (406) 293-4354



SKETCH OF CORNER

CERTIFICATION

I, Levi Powell
certify the information shown herein is true and correct.
[Signature]
Signature Ground Party Chief

I, Alvah F. Hughes
certify that this Corner Record correctly represents work performed by me or under my direction in compliance with the "Corner Recordation Act" (30-22-101, et seq., M.C.A.)
[Signature]
Signature of Surveyor & Seal

Date: 11/03/2008 Reg. No. 7322-LS

Employer: Kootenai Surveyors Inc.

Office of Clerk and Recorder, County of Lincoln This "corner

record" was fil 215762 BOOK: CCR CC&R'S PAGE: 11284 Pages: 1

was noted on STATE OF MONTANA LINCOLN COUNTY

RECORDED: 12/01/2008 2:17 KOI: CC&R'S

book No. TAMMY D. LAUER CLERK AND RECORDER

FEE: \$0.00

BY: *[Signature]*

TO: KOOTENAI SURVEYORS INC. P.O. BOX 393, LIBBY, MT 59923

Cross Index No. R 21 T. 29N R. 29W P.M., MT

Adopted July 1, 1981, Montana Board of Professional Engineers & Land Surveyors

