

# CERTIFIED CORNER RECORDATION

Corner N 1/16 S23 T 29 N. R. 29 W. P.M.M. Lincoln County

I. Record: None

II. Found: No monument or accessories found during area search.

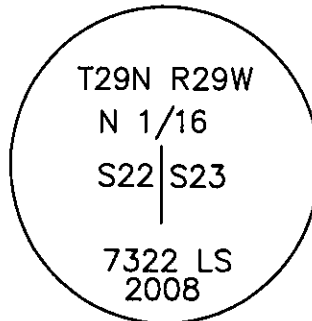
III. Perpetuation: At the corner point, determined by survey, set a 5/8 ins. diam. steel rebar 24 ins. long 22 ins. in the ground, with a 3 1/4 ins. diam. Aluminum cap marked as shown below from which:

A pine, 30 ins. diam., bears S. 48°30' E., 40.90 ft. dist., scribed N 1/16 S23 BT.  
A pine, 24 ins. diam., bears N. 85° W., 47.70 ft. dist., scribed N 1/16 S22 BT.

Painted faces and 6 in. wide red bands to all bearing trees and attached Land Survey Monument and Bearing Tree signs.

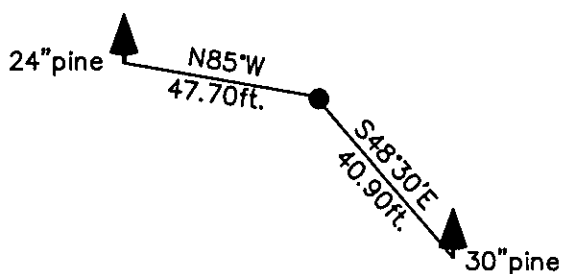
Magnetic declination: 18° East

Equipment used: Hand compass and loggers tape



Kootenai Surveyors Inc., 314 California Av., Libby, MT. 59923 (406) 293-4354

ARIANNA- PCTC



SKETCH OF CORNER

## CERTIFICATION

I, Levi Powell  
certify the information shown herein is true and correct.

Levi Powell  
Signature Ground Party Chief  
Alvah F. Hughes

I certify that this Corner Record correctly represents work performed by me or under my direction in compliance with the Corner Recordation Act (70-22-101, et seq., M.C.A.)  
Alvah F. Hughes  
Signature of Surveyor & Seal

Date: 11/03/2008 Reg. No. 7322-LS  
Employer: Kootenai Surveyors Inc.

Office of Clerk and Recorder, County of Lincoln This "corner

record" was filed for r 215761 BOOK: CCR CC&R'S PAGE: 11283 Pages: 1

was noted on the cro: STATE OF MONTANA LINCOLN COUNTY  
RECORDED: 12/01/2008 2:15 KOI: CC&R'S

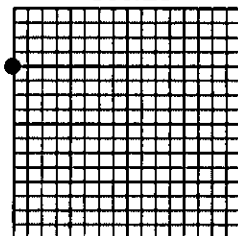
book No. TAMMY D. LAUER CLERK AND RECORDER

FEE: \$0.00 BY: Tammy D. Lauer  
TO: KOOTENAI SURVEYORS INC. P.O. BOX 393, LIBBY, MT 59923

Cross Index No. 0 17 T. 29N R. 29W P.M., MT

Adopted July 1, 1981, Montana Board of Professional Engineers & Land Surveyors

Sec.23



• corner this sheet