

## INSTRUCTIONS

1. Original and/or subsequent record used to evaluate the corner position.
2. Description of evidence found, note discrepancies in the record, state method of establishing lost or obliterated corners.
3. Description of monument and accessories set to perpetuate the corner position.
4. Sketch of corner, show all pertinent data which can best be shown in a sketch example, corner marking, topography ties, position of accessories, etc.
5. Certification must be signed and sealed by Land Surveyor registered in the State of Montana.
6. Fill in Cross Index & Section Diagram at bottom of sheet.

## CERTIFIED CORNER RECORDATION

Corner S1/4 SEC.S 8/17 T. 29N R. 29W P.M.M. Lincoln County

## ORIGINAL:

GLO - 1898 - Paul S.A. Bickel

Set a slate stone, 14x8x8, 9" in the ground for 1/4 Section corner, marked "1/4" on north face; from which:

An 18" fir bears North, 24 links (15.84 feet) distant, marked 1/4 S8 BT.

A 14" tamarack bears S73°E, 22 links (14.52 feet) distant, marked 1/4 S17 BT.

## BLM - 1964

Found original stone in place. Set a 2 1/2" iron pipe, 27" in the ground and buried original stone alongside, from which:

A 22" Douglas Fir bears North, 24 links (15.84 feet) distant.

A 16" Douglas Fir bears S47°E, 37 links (24.42 feet) distant.

## FOUND:

Found a 3 1/2" brass cap on 2 1/2" galvanized pipe, marked as shown below. Found the following original bearing trees:

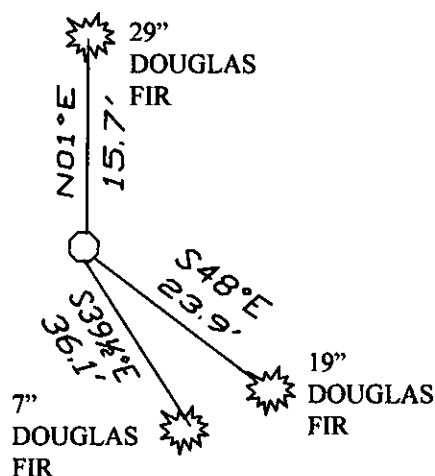
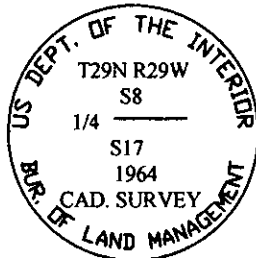
A 29" Douglas Fir bears N01°E, 15.7 feet distant.

A 19" Douglas Fir bears S48°E, 23.9 feet distant.

## ESTABLISH:

Establish 1 new accessory for this corner.

A 7" Douglas Fir bears S39 1/2°E, 36.1 feet distant, marked "1/4 S17 BT".



SKETCH OF CORNER

## CERTIFICATION

I, James R. Staples

Certify the information shown herein is true and correct.

James R. Staples  
Signature Ground Party Chief

I, James R. Staples

certify that this Corner Record correctly represents work performed by me or under my direction in compliance with the "Corner Recordation Act" (70-22-101, et seq., M.C.A.)

James R. Staples  
Signature of Surveyor & Seal

Date: 7/7/08 Reg. No. 9958LS

Employer: J.R.S. Surveying, Inc.

Office of Clerk and Recorder, County of \_\_\_\_\_ This "corner

record" was filed for rec 213022 BOOK: CCR CC&R'S PAGE: 11235 Pages: 1

was noted on the cross-STATE OF MONTANA LINCOLN COUNTY  
RECORDED: 07/22/2008 1:55 KOI: CC&R'S

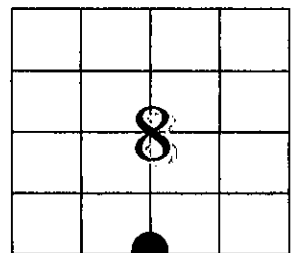
book no. TAMMY D. LAUER CLERK AND RECORDER

FEE: \$0.00

BY: Leanne Lauer

TO: J.R.S. SURVEYING P.O. BOX 1050, LIBBY, MONTANA 59923

Cross Index No. J7 T. 29N R. 29W P.M.M.



• - Corner this sheet