

INSTRUCTIONS

1. Original and/or subsequent record used to evaluate the corner position.
2. Description of evidence found, note discrepancies in the record, state method of establishing lost or obliterated corners.
3. Description of monument and accessories set to perpetuate the corner position.
4. Sketch of corner, show all pertinent data which can best be shown in a sketch example, corner marking, topography ties, position of accessories, etc.
5. Certification must be signed and sealed by Land Surveyor registered in the State of Montana.
6. Fill in Cross Index & Section Diagram at bottom of sheet.

CERTIFIED CORNER RECORDATION

Corner E1/4 SEC.S 8/9 T. 29N R. 29W P.M.M. Lincoln County

ORIGINAL:

GLO 1898 – Paul S.A. Bickel

40 chains.... On a rock ledge, 12'x 8', 4' high, mark "+" on rock, with "1/4" on west side, raise a mound of stone; from which:

A 6" pine bears S88°15'W, 39 links (25.74 feet) distant, marked "1/4 S9 BT".

A 6" fir bears S74°30'W, 40 links (26.40 feet) distant, marked "1/4 S8 BT".

BLM - 1966

Found corner marked "+" on rock ledge, "1/4" on east side of "+" with a mound of stone on the west side. Set brass table into rock and concrete, from which:

An 11" Ponderosa Pine bears S86°E, 39 links (25.74 feet) distant.

A 9" Douglas Fir bears N62°W, 39 links (25.74 feet) distant.

FOUND:

Found a 3 1/2" brass cap in rock ledge with concrete. Found the following original bearing trees:

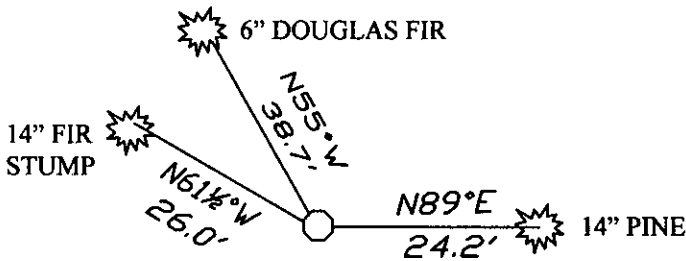
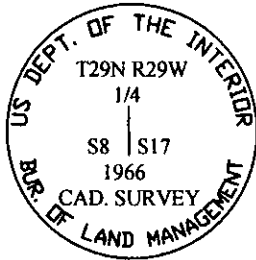
A 14" fir stump bears N61 1/2°W, 26.0 feet distant.

A 14" pine bears N89°E, 24.2 feet distant.

ESTABLISH:

Establish 1 new accessory for this corner.

A 6" Douglas Fir bears N55°W, 38.7 feet distant, marked "1/4 S8 BT".



SKETCH OF CORNER

CERTIFICATION

I, James R. Staples
 Certify the information shown herein is true and correct.

James R. Staples
 Signature Ground Party Chief

I, James R. Staples
 certify that this Corner Record correctly represents work performed by me or under my direction in compliance with the "Corner Recordation Act" (70-22-101, et seq., M.C.A.)

James R. Staples
 Signature of Surveyor & Seal

Date: 7/7/08 Reg. No. 9958LS

Employer: J.R.S. Surveying, Inc.

Office of Clerk and Recorder, County of _____ This "corner

record" was filed for record on 213021 BOOK: CCR CC&R'S PAGE: 11234 Pages: 1

was noted on the STATE OF MONTANA LINCOLN COUNTY

RECORDED: 07/22/2008 1:50 KOI: CC&R'S

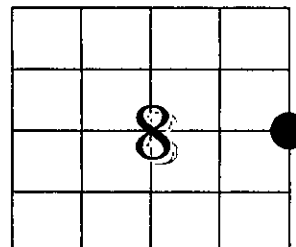
book no. _____ TAMMY D. LAUER CLERK AND RECORDER

FEE: \$0.00

BY: *Deanna Deanna Deputy*

TO: J.R.S. SURVEYING P.O. BOX 1050, LIBBY, MONTANA 59923

Cross Index No. G9 T. 29N R. 29W PMM



• - Corner this sheet