

# CERTIFIED CORNER RECORDATION

Corner SE cor. of Sec. 4 T 29 N. R. 29 W. P.M.M. LINCOLN County

I. Record: 1898 GLO survey By Bickel: Set a stone 18"x8"x4", 12 ins. in ground from which:

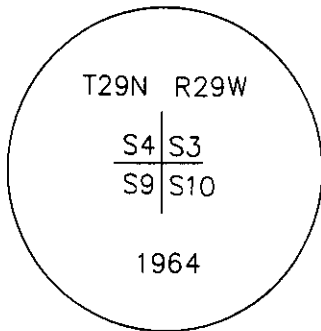
- A pine, 24 ins. diameter, bears N.55°10'E., 65 lks. dist. (42.9 ft.).
- A fir, 12 ins. diameter, bears S.65°E., 76 lks. (50.16 ft.).
- A pine, 10 ins. diameter, bears S.35°W., 106 lks. (103.96 ft.).
- A pine, 30 ins. diameter, bears N.32°W., 38 lks. (25.08 ft.).

1966 BLM Remon: Set 3 1/4 in. diam. Brass cap. Found 4 original BT's.  
Raise a collar of stone, 3 ft. diam., around the iron post.

II. Found: A 3 1/4 in. diam. BLM brass cap firmly set 4 ins. above ground, from which:

- A pine snag, 22 ins. diameter, bears N.55°E., 43.00 ft. dist., with visible scribes.
- A fir, 30 ins. diameter, bears S.65°E., 50.20 ft. dist., with visible face.
- A pine, 18 ins. diameter, bears S.35°W., 66.00 ft. dist., with visible face.
- A pine stump, 36 ins. diameter, bears N.32°W., 27.20 ft. dist., with visible scribes.

III. Perpetuation:



From which:

A Douglas fir, 24 ins. diam., bears N.72°W., 84.00 ft. dist., scribed T29W R29W S4 BT.

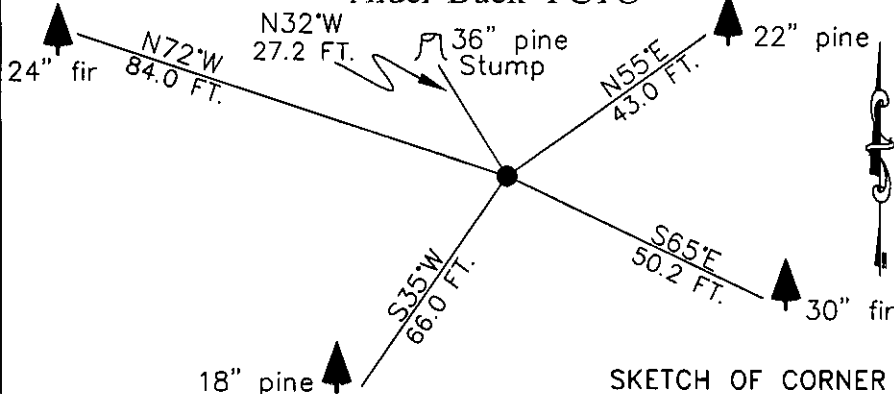
Painted 6 in. wide red bands around all BT's and attached new Bearing Tree signs as needed and Land Survey Monument signs on back of all bearing trees.

Magnetic declination: 20° East assumed

Equipment used: Hand compass and loggers tape

Kootenai Surveyors Inc., 314 California Av., Libby, MT. 59923 (406) 293-4354

### Alder-Buck- PCTC



SKETCH OF CORNER

### CERTIFICATION

I, Kenneth Kern  
certify the information shown herein is true and correct.

*Kenneth Kern*  
Signature Ground Party Chief

I, Alvah F. Hughes  
certify that this Corner Record correctly represents work performed by me or under my direction in compliance with the "Corner Recordation Act" (70-22-101, et seq. M.C.A.)

*Alvah F. Hughes*  
Signature of Surveyor & Seal

Date: 1/06/2005 Reg. No. 7322-LS

Employer: Kootenai Surveyors, Inc.

Office of Clerk and Recorder, County of Lincoln This "corner

record" was filed for record on \_\_\_\_\_

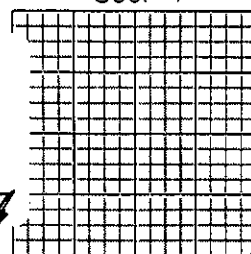
was noted on the cross-index book No. \_\_\_\_\_

188873 BOOK: CCR CC&R'S PAGE: 10856 Pages: 1  
STATE OF MONTANA LINCOLN COUNTY  
RECORDED: 10/18/2005 8:37 KOI: CC&R'S  
CORAL M. CUMMINGS CLERK AND RECORDER  
FEE: \$0.00 BY *Jennie Dennis*  
TO: KOOTENAI SURVEYORS INC. P.O. BOX 393, LIBBY, MT 59923

Cross Index No. E 13 T. 29N. R. 29W. P.M., MT

Adopted July 1, 1981, Montana Board of Professional Engineers & Land Surveyors

Sec. 4



• corner this sheet



*[Faint, illegible handwritten text]*