

CERTIFIED CORNER RECORDATION

Corner SW cor. of Sec. 4 T 29 N. R. 29 W. P.M.M. LINCOLN County

I. Record: 1898 GLO survey by Bickel: Set a stone 12x8x8 ins., 8 ins. in the ground from which:

- A pine, 36 ins. diam., bears N.51°E., 80 lks. dist. (52.80 ft.).
- A fir, 12 ins. diam., bears S.2°30'E., 66 lks. dist. (43.56 ft.).
- A pine, 16 ins. diam., bears S.49°15'W., 41 lks. dist. (27.06 ft.).
- A pine, 18 ins. diam., bears N.27°45'W., 48 lks. dist. (31.68 ft.).

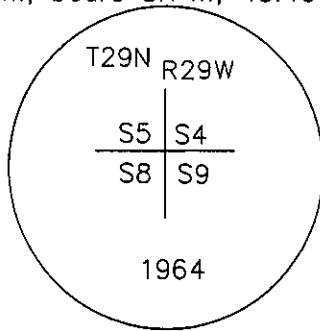
1964 - BLM Remon: Set a 3 1/4 ins. diam. brass cap from original found stone and bearing trees from which:

- A fir, 5 ins. diam., bears S.49°E., 18 lks. dist. (11.88 ft.).
- A fir, 6 ins. diam., bears S.41°W., 48 lks. dist. (31.68 ft.).
- A fir, 6 ins. diam., bears N.70°W., 29 lks. dist. (19.14 ft.).
- A fir, 5 ins. diam., bears N.61°E., 69 lks. dist. (45.54 ft.).

II. Found: A 3 1/4 ins. diam. BLM brass cap firmly set 4 ins. above ground from which:

- A Douglas fir, 12 ins. diam., bears N.70°W., 19.41 ft. dist. (1964 Remon)
- A Douglas fir, 10 ins. diam., bears N.61°E., 45.20 ft. dist. (1964 Remon)
- A Douglas fir, 10 ins. diam., bears S.49°E., 12.20 ft. dist. (1964 Remon)
- A Ponderosa pine stump, 16 ins. diam., bears S.14°E., 31.40 ft. dist. (Record S41°W.1964 Remon)
- A Ponderosa pine stump, 34 ins. diam., bears N.51°E., 51.70 ft. dist. (Original GLO)
- A Ponderosa pine, 22 ins. diam., bears S.1°W., 43.40 ft. dist. (Record S2°30'E. Original GLO)

III. Perpetuation:



From which:

A Douglas fir, 8 ins. diam., bears S.70°W., 7.40 ft. dist., scribed T29N R29W S8 BT.

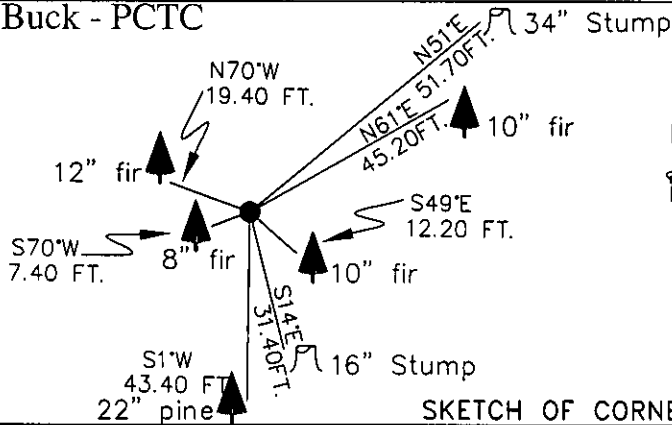
Painted 6 in. wide red bands around all bearing trees and attached Land Survey Monument and Bearing tree signs where needed.

Magnetic declination: 20° East assumed

Equipment used: Hand compass and loggers tape

Kootenai Surveyors Inc., 314 California Av., Libby, MT. 59923 (406) 293-4354

Alder-Buck - PCTC



SKETCH OF CORNER

CERTIFICATION

I. Kenneth Kern
certify the information shown herein is true and correct.

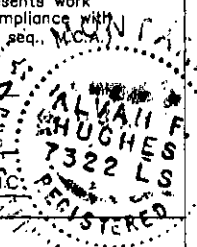
Kenneth Kern
Signature Ground Party Chief

I. Alvah F. Hughes
certify that this Corner Record correctly represents work performed by me or under my direction in compliance with the "Corner Recordation Act" (70-22-101, et seq., M.C.A.)

Alvah F. Hughes
Signature of Surveyor & Seal

Date: 1/06/2005 Reg. No. 7322-ES

Employer: Kootenai Surveyors, Inc.



Office of Clerk and Recorder, County of Lincoln This "corner

record" was filed for record on _____
was noted on the cross-index
book No. _____

188870 BOOK: CCR CC&R'S PAGE: 10853 Pages: 1
STATE OF MONTANA LINCOLN COUNTY
RECORDED: 10/18/2005 8:34 KOI: CC&R'S
CORAL M. CUMMINGS CLERK AND RECORDER
FEE: \$0.00 BY: *Coral M. Cummings*
TO: KOOTENAI SURVEYORS INC. P.O. BOX 393, LIBBY, MT 59923

Cross Index No. E 09 T. 29 N. R. 29 W. P.M.M. MT

Sec. 4									

Adopted July 1, 1981, Montana Board of Professional Engineers & Land Surveyors

• corner this sheet



Handwritten text and a circular stamp, likely a library or archival mark, located in the bottom left corner of the page. The stamp is circular and contains illegible text. The handwritten text is a name, possibly "Mrs. J. H. Smith", written in cursive.