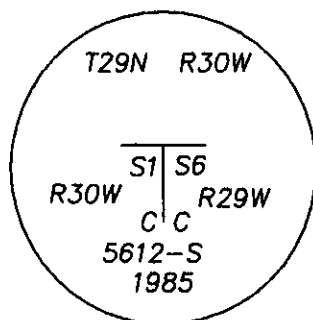
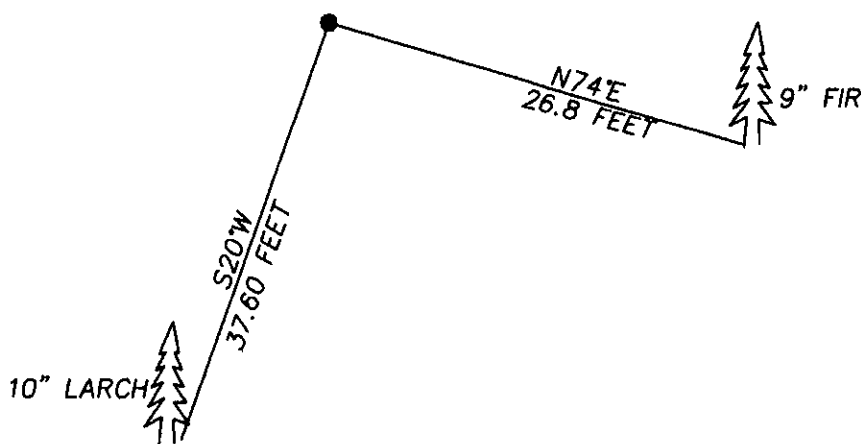


177981 BOOK: CCR CC&R'S PAGE: 10643 Pages: 1
STATE OF MONTANA LINCOLN COUNTY
RECORDED: 07/27/2004 1:00 KOI: CC&R'S
CORAL M. CUMMINGS CLERK AND RECORDER
FEE: \$0.00 BY: Jeannie Dennis
TO: FILED Deputy

CERTIFIED CORNER RECORDATION

Corner NORTH WEST SECTION 6 T. 29N R. 29W P.M.M. LINCOLN County

FOUND: 3" ALUM CAP STAMPED AS SHOWN, FROM WHICH:
A 13" FIR BEARS S74°E 26.8 FEET WITH SCRIBE
A 10" LARCH BEARS S20°W 37.6 FEET WITH SCRIBE OVERGROWN



SKETCH OF CORNER

CERTIFICATION
I, DAN CROFT
certify the information shown herein is true and correct.
Dan Croft
Signature Ground Party Chief
I, MARC J. CARSTENS
certify that this Corner Record correctly represents the corner
performed by me or under my direction in compliance with
the 'Corner Recordation Act' (70-22-101, et seq.)
Marc J. Carstens
Signature of Surveyor & Seal
Date: 07-29-04 Reg. No. 5940 LS
Employer: CARSTENS LAND SURVEYING



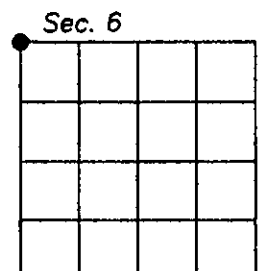
Office of Clerk and Recorder, County of LINCOLN . This 'corner
record' was filed for record on 7-27-04

was noted on the cross-index plat and is assigned page No. 10643 , in
doc. 177981
book No. 177981

Jeannie Dennis
County Official Deputy

Cross Index No. A-1 T. 29N R. 29W P.M.M.

Adopted July 1, 1981, Montana Board of Professional Engineers & Land Surveyors



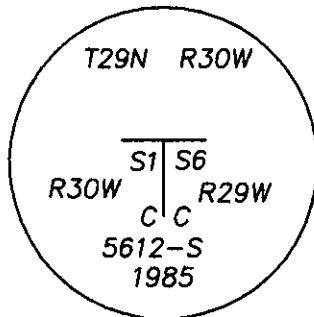
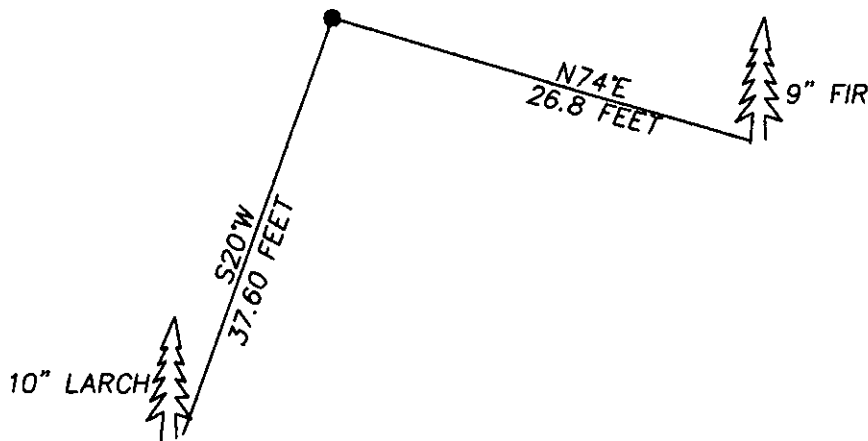
• corner this sheet

CERTIFIED CORNER RECORDATION

Corner NORTH WEST SECTION 6 T. 29N R. 29W P.M.M. LINCOLN County

FOUND: 3" ALUM CAP STAMPED AS SHOWN, FROM WHICH:
A 13" FIR BEARS S74°E 26.8 FEET WITH SCRIBE
A 10" LARCH BEARS S20°W 37.6 FEET WITH SCRIBE OVERGROWN

Copy



SKETCH OF CORNER

CERTIFICATION

I, DAN CROFT
certify the information shown herein is true and correct.

Dan Croft
Signature of Ground Party Chief

I, MARC J. CARSTENS
certify that this Corner Record correctly represents the corner as
performed by me or under my direction in compliance with the
"Corner Recordation Act" (70-22-101, et seq.)

Marc J. Carstens
Signature of Surveyor & Seal

Date: 07-29-04 Reg. No. 5940 LS

Employer: CARSTENS LAND SURVEYING



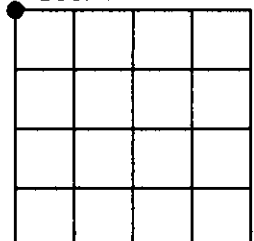
Office of Clerk and Recorder, County of LINCOLN. This "corner
record" was filed for record on 7-27-04
was noted on the cross-index plat and is assigned page No. 10643, in
book No. 177981

Glennie Dennis
County Official Deputy

Cross Index No. A-1 T. 29N R. 29W PMM

Adopted July 1, 1981, Montana Board of Professional Engineers & Land Surveyors

Sec. 6



* corner this sheet