

CERTIFIED CORNER RECORDATION

Corner Sections 1, 6, 7 & 12 T. 28 N., R. 29 W., P.M.M. Lincoln County
T. 28 N., R. 30 W., P.M.M.

Record :

1900 original GLO notes by Burton S. Adams.
Set a granite stone 22"x8"x6", 16 inches in the ground; established 4 Bearing Trees.

1916 retracement of the west boundary of T28N R29W PMM, by Armstrong.
"I made the cor. of Sec. 1 and 12 only by cutting the marking from the Bearing Trees in Sec. 6 and 7."

Found Evidence :

Found the stone set by Adams and the stump with BT. Stone broken off and the notches clearly visible.

Perpetuation :

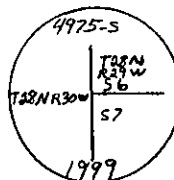
Established the following new Bearing Trees:

A Douglas Fir, 12 inches diam. DBH, bears N 68° E, 13.90 feet, scribed T28N R29W S6 BT.
A Douglas Fir, 9.5 inches diam. DBH, bears S 20° E, 17.4 feet, scribed T28N R29W S7 BT.

Set a 3 1/4 inch diam. alum. cap attached to a 2 1/2 inch diam. alum. pipe, 30 inches long, 26 inches in the ground. Rock pile around monument with the broken stone alongside.

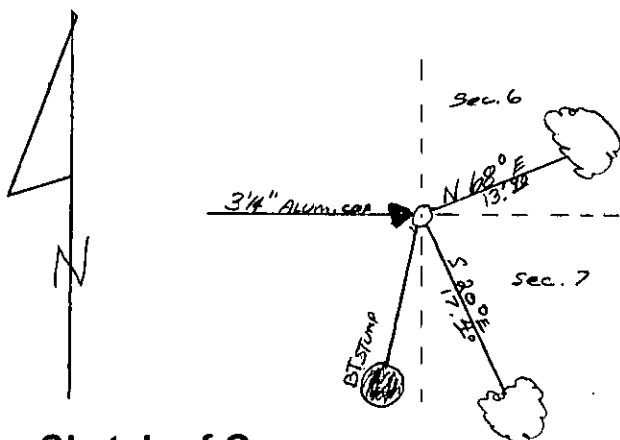
Painted red bands around Bearing Trees and attached Bearing Tree and Land Survey Monument signs.

3/4" ALUM. CAP



Declination: 17° East

BT'S FOR sec. 6-7 (ONLY)



Sketch of Corner

CERTIFICATION

I, Ricky E. Shannon
certify the information shown herein is true and correct

Ricky E. Shannon
Signature of Ground Party Chief

I, Kenneth E. Davis

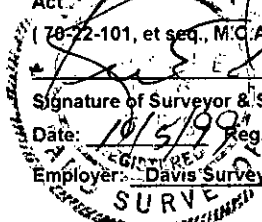
certify that this Corner Record correctly represents work performed by Me or under my direction in compliance with the "Corner Recordation Act".

(78-22-101, et seq., M.C.A.)
Kenneth E. Davis

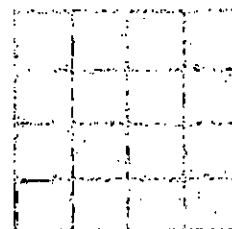
Signature of Surveyor & Seal

Date: 10/5/99 Reg. No. 4975-S

Employer: Davis Surveying, Inc.



Section



Office of Clerk and Recorder, County of Lincoln

This "corner record" was filed for record on Oct 6, 1999
was noted on the cross-index plat and is assigned page No. 10352

in book No. Coral M. Cummings By OLB
County Official

Cross Index No. Sec. 1, 6, 7 & 12 T. 29 N., R. 29 & 30 W., PMM

• THIS CORNER