

CERTIFIED CORNER RECORD

Corner Sec 12/7 T. 29 N., R. 29 W., P.M.M. Lincoln County

Record :

1898 GLO Township Boundary Survey by Paul S.A. Bickel.

"Set slate stone from which:

- A Fir 10 ins. diam. bears N 14°50' E, 40 lks.
- A Fir 10 ins. diam. bears S 52° E, 73 lks.
- A Pine 30 ins. diam. bears S 50°50' W, 60 lks.
- A Fir 10 ins. diam. bears N 42°20' W, 43 lks."

1966 BLM Remonumentation

"Found stone firmly set, set 2 1/2 in. dia. iron pipe 24 ins. in the ground with 3 1/4 in. dia. brass cap from which:

- A Douglas Fir 11 ins. diam. bears N 14°50" E 40 lks.
- A Ponderosa Pine 24 ins. diam. bears S 50°50' W 60 lks.
- A Douglas Fir 10 ins. diam. bears S 76° E 15 lks.
- A Douglas Fir 10 ins. diam. bears N 85° W 55 lks.

Bury original stone alongside iron pipe."

Found Evidence :

A 2 1/2 in. diam. Iron pipe, 4 ins. above the ground, with 3 1/4 in. diam. brass cap marked as shown below, from which:

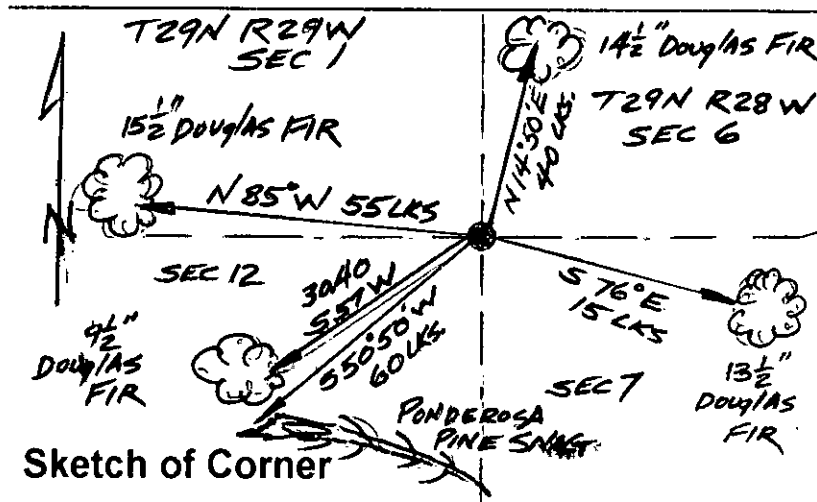
- A Douglas Fir, 14 1/2 ins. diam., bears N 14°50' E, 40 lks. dist., with visible scribing.
- A Douglas Fir, 13 1/2 ins. diam., bears S 76° E, 15 lks. dist., with visible scribing.
- A Ponderosa Pine snag, fallen over, bears S 50°50' W, 60 lks. with visible scribing.
- A Douglas Fir, 15 1/2 ins. diam., bears N 85° W, 55 lks. dist., with overgrown face.

Perpetuation :

We establish one Bearing Tree described as follows:

- A Douglas Fir, 9 1/2 ins. diam., bears S 57° W, 30.40 ft. dist., scribed (T29N R29W S12 BT).
- Paint 6 in. wide bands and all faces red on Bearing Trees.
- Attach Land Survey Monument and Bearing Tree signs where needed.
- Set a 6 ft. long steel post 2 ft. in the ground with attached land survey monument and property boundary decals north 3.00 ft. dist. on line.

Magnetic Declination: 18° East



CERTIFICATION

I, John Damon

certify the information shown herein is true and correct

Signature of Ground Party Chief

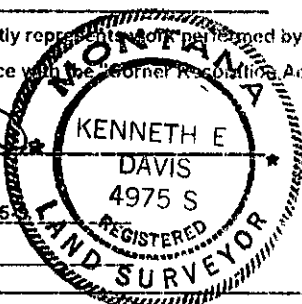
I, Kenneth E. Davis

certify that this Corner Record correctly represents work performed by me or under my direction in compliance with the "Corner Recording Act" (20-22-101, et seq., M.C.A.)

Signature of Surveyor & Seal

Date: 10/31/98 Reg. No. 49753

Employer: Davis Surveying, Inc.



Sketch of Corner

Section

Office of Clerk and Recorder, County of Lincoln

This "corner record" was filed for record on 11-18-98

was noted on the cross-index plat and is assigned page No. 10265

in book No. Coral M. Cumming by Reg

County Official

SEC 12

Cross Index No. 1/6 Sec 12/7 T. 29 N., R. 29 W., PMM

• THIS CORNER