

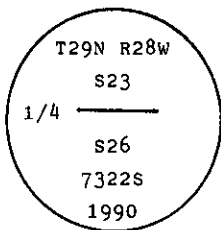
INSTRUCTIONS

1. Original and/or subsequent record used to evaluate the corner position.
2. Description of evidence found, note discrepancies in the record, state method of establishing lost or obliterated corners.
3. Description of monument and accessories set to perpetuate the corner position.
4. Sketch of corner, show all pertinent data which can best be shown in a sketch example, corner marking, topography ties, position of accessories, etc.
5. Certification must be signed and sealed by Land Surveyor registered in the State of Montana.
6. Fill in Cross Index & Section Diagram at bottom of sheet.

CERTIFIED CORNER RECORDATION

Corner 1/4 Cor. of Secs. 23 & 26 T. 29 N. R. 28 W. P.M.M. Lincoln County

- I. 1903 original G.L.O. record by George A. Fessenden and Ranney Y. Lyman: "Set a slate stone, 18 X 12 X 8 ins., 12 ins. in the ground, for 1/4 sec. cor., marked 1/4 on N. face, from which
- A fir, 6 ins. dia., bears N60°30'W, 6 lks. dist., marked 1/4 S23 BT.
 A pine, 10 ins. dia., bears S16°W, 37 lks. dist., marked 1/4 S26 BT.
- II. Found a stone, 18 X 12 x 6 ins., firmly set, 8 ins. above ground, mkd. 1/4 on N. face, from which
- A stump hole, bears N60°W, 4.0 ft. (6 lks.) dist.
 A stump hole, bears S16°W, 24.4 ft. (37 lks.) dist.
- III. At the corner point, set a 2 1/2 ins. dia. aluminum pipe, 30 ins. long, 18 ins. in the ground with a 3 1/4 ins. diam. aluminum cap, marked as shown:



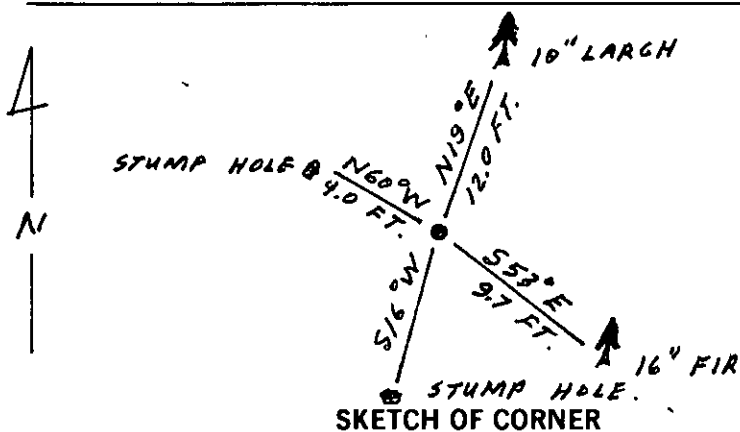
Bury original stone alongside new monument and raise a collar of stone around pipe.

Established two new bearing trees:

- A larch, 10 ins. dia., bears N19°E, 12.0 ft. dist., mkd. 1/4 S23 BT.
 A douglas fir, 16 ins. dia., bears S53°E, 9.7 ft. dist., mkd. 1/4 S26 BT.

Painted a red band around each bearing tree and attached Land Survey Monument and Bearing Tree signs.

Magnetic Declination: 20° East.



CERTIFICATION

I, Kevin Todd
 certify the information shown herein is true and correct.

Kevin Todd
 Signature Ground Party Chief

I, Alvah F. Hughes
 certify that this Corner Record correctly represents work performed by me or under my direction in compliance with the Corner Recordation Act" (70-22-101, et seq., M.C.A.)

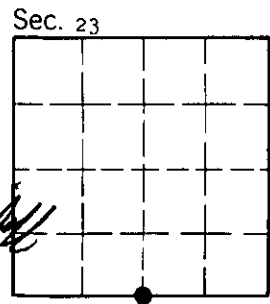
Alvah F. Hughes
 Signature of Surveyor

Date: 12/21/90 Reg. No. 7322S

Employer: U.S. FOREST SERVICE

Office of Clerk and Recorder, County of Lincoln. This "corner record" was filed for record on 1-10-91 was noted on the cross-index plat and is assigned page No. 4500, in book No. _____

Coral M. Cummings by Bill Buckley
 County Official



R-19 29 N 28 W
 Cross Index No. _____ T. _____ R. _____ P.M.M.

• - corner this sheet