

INSTRUCTIONS

1. Original and/or subsequent record used to evaluate the corner position.
2. Description of evidence found, note discrepancies in the record, state method of establishing lost or obliterated corners.
3. Description of monument and accessories set to perpetuate the corner position.
4. Sketch of corner, show all pertinent data which can best be shown in a sketch example, corner marking, topography ties, position of accessories, etc.
5. Certification must be signed and sealed by Land Surveyor registered in the State of Montana.
6. Fill in Cross Index & Section Diagram at bottom of sheet.

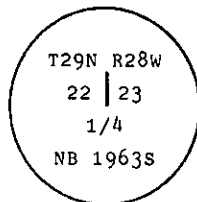
CERTIFIED CORNER RECORDATION

Corner 1/4 Cor. of Secs. 22 & 23 T. 29 N. R. 28 W. P.M.M. Lincoln County

- I. 1903 original G.L.O. record by George A. Fessenden and Ranney Y. Lyman: "Set a sandstone, 14 X 8 X 6 ins., 9 ins. in the ground, for 1/4 sec. cor., marked 1/4 on W. face, from which

A tamarack, 30 ins. dia., bears N13°30'E, 15 lks. dist., marked 1/4 S23 BT.
A tamarack, 24 ins. dia., bears N57°30'W, 28 lks. dist., marked 1/4 S22 BT.

1963 remonumentation, Corner Search Card record by Norman Berg, Reg. #1963S: "Calculated coordinates and located sandstone as described, and stumps of bearing trees with correct bearings and distances from said stone."



"Placed stone in 3 ft. hole, planted a pipe with brass cap over stone."

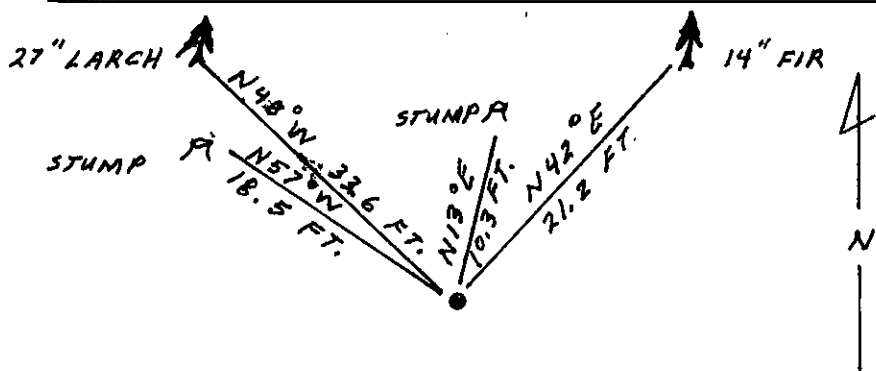
Blazed two trees:

A fir, 8 ins. dia., bears N42°E, 20.71 ft. dist., mkd. FSRM.
A tamarack, 30 ins. dia., bears N48°W, 32.7 ft. dist., mkd. FSRM.

- II. Found a 2 ins. dia. pipe, 10 ins. above ground with a brass cap marked as shown above, from which

A douglas fir, 14 ins. dia., bears N42°E, 21.2 ft. dist., overgrown blaze.
A larch, 27 ins. dia., bears N48°W, 33.6 ft. mkd. FSRM.
A rotten stump, bears N13°E, 10.3 ft. (15.6 lks.) dist. (original)
A rotten stump, bears N57°W, 18.5 ft. (28.0 lks.) dist. (original)

- III. Painted a red band around each bearing tree and attached Land Survey Monument and Bearing Tree signs.
Set a 6 ft. galvanized steel guard post with Survey Marker decal attached, 3 ft. South from corner.
Magnetic Declination: 20° East.



SKETCH OF CORNER

CERTIFICATION

I, Kevin Todd
certify the information shown herein is true and correct.
Kevin Todd
Signature Ground Party Chief
I, Alvah F. Hughes
certify that this Corner Record correctly represents work performed by me or under my direction in compliance with the Corner Recordation Act" (70-22-101, et seq., M.C.A.)
Alvah F. Hughes
Signature of Surveyor & Seal
Date: 12/21/90 Reg. No. 73221
Employer: U.S. FOREST SERVICE

Office of Clerk and Recorder, County of Lincoln. This "corner record" was filed for record on 1-10-91 was noted on the cross-index plat and is assigned page No. 4497, in book No. Coral M Cummings by Bill Buck

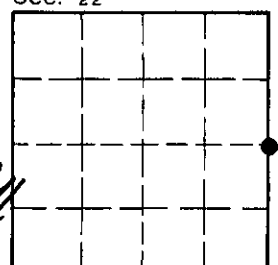
County Official

P-17

29 N 28 W

Cross Index No. T. R. P.M.M.

Sec. 22



• - corner this sheet