

CERTIFIED LAND CORNER RECORDATION

Section 20 Twp. 29 N. R. 28 W. M. P. M. C 1/16 S and S 1/16 between said Sec. 20

DESCRIPTION OF CORNER EVIDENCE FOUND, AND ORIGINAL RECORD (IF KNOWN) and Sec. 19

SW Corner - Found a stone and 4 BTs.

W 1/4 Corner Found a stone in place 30X24X18 ins. above ground

Marked with cross and 1/4 - two BTs.

S 1/4 Corner stone and 2 BTs.

E 1/4 Corner Found a stone and two BTs.

N 1/4 Corner Found a stone and one BT.

DESCRIPTION OF MONUMENT AND ACCESSORIES ESTABLISHED TO PERPETUATE THE ORIGINAL LOCATION OF THIS CORNER:

Date of work: 7/24/'72

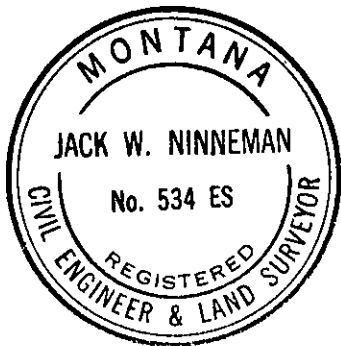
For S 1/16 Corner set a "T" bar marked S 1/16 from which a 24" larch bears
N 52°27' E 37.0 feet A 30" pine bears S 49°19' E 58.8 feet. Both scribed
S 1/16 and posted.

For C 1/16 S set a standard brass cap monument from which a steel pin in
Burlington Northern R.R. right of way fence bears N 4°31' 19" E 40.22 feet
A 10" fir bears N 30° E 60.8 feet - scribed C 1/16 and posted.

SKETCH, WITH COURSE AND DISTANCE TO ADJACENT CORNERS IF DETERMINED IN THIS SURVEY.
(MAY SKETCH OR PASTE REPRODUCTION ON REVERSE SIDE.)

SEE REVERSE SIDE

Surveyor's Seal



I, Jack H. Ninneman

certify that the information shown herein is true and correct.

Jack H. Ninneman

Signature of Ground Party Chief

I, Jack W. Ninneman

certify that I have carefully performed or reviewed the work done on the diagrammed corner as reported on this recordation form and approve the same.

Jack W. Ninneman

Signature of Surveyor

DIAGRAM OF CORNER:

N. See reverse side

= Corner recorded on the sheet

Mont. 534 E.S.
Registration Number

Office of Clerk and Recorder, County of Lincoln

This "corner record" was filed for record on the 25th day of July 1972, was noted on the cross-index plat and is assigned page No. 1, in book No. 272

Eleanor L. Vaughn
County Official

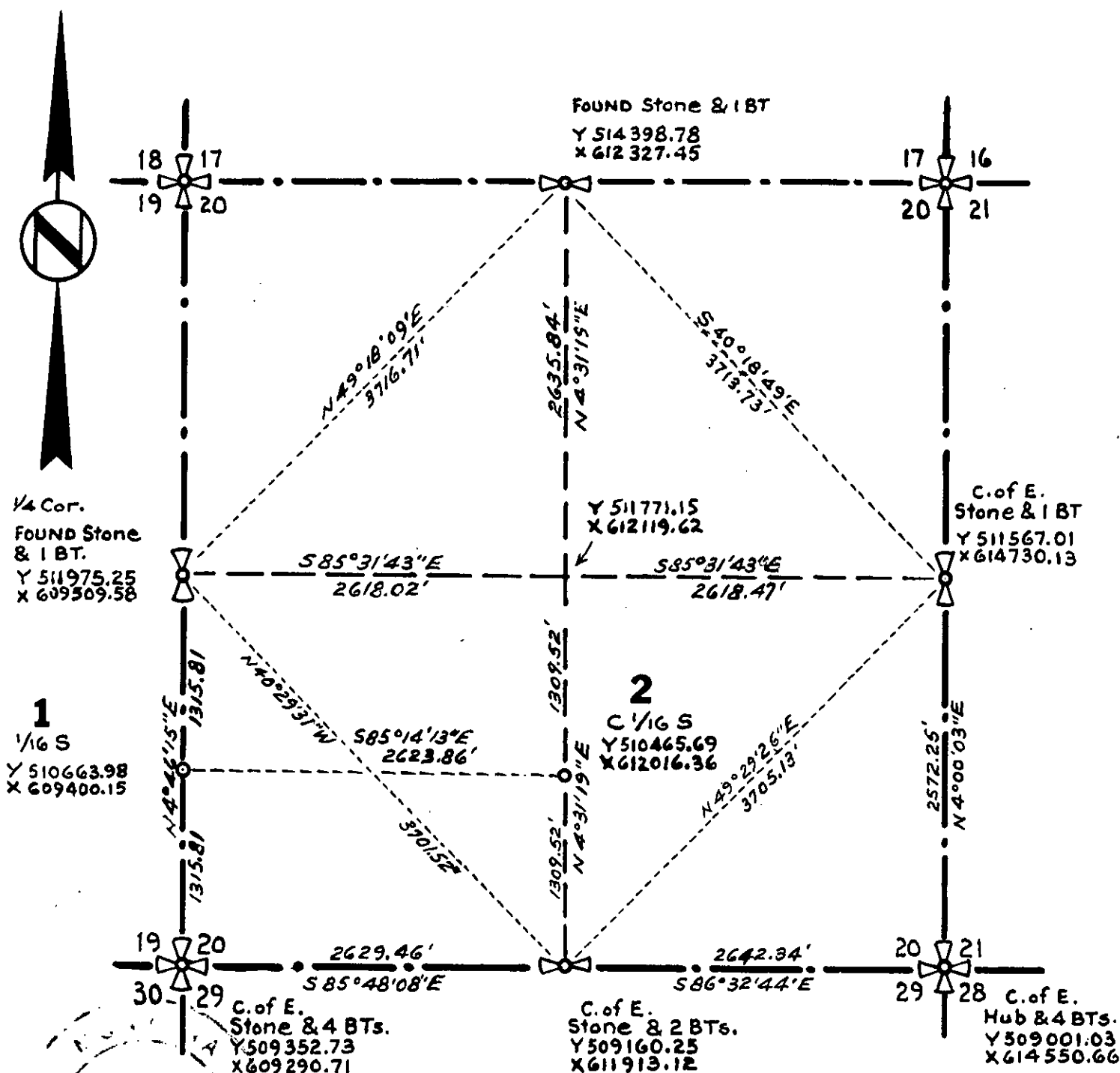
1 For S 1/16 Corner

Set "T" bar Marked S 1/16 from which A 24" larch N 52°27' E 37.0 feet
A 30" Pine S 49°19' E 58.8 feet Both scribed S 1/16 and posted.

2 For Center 1/16 Corner South

Set a standard brass cap monument from which
A steel pin in Burlington Northern R.R. right of way fence - N 4°31'19"E 40.22 ft.
A 10" dia. Fir bears N 30° E 60.8 feet Scribed C 1/16 and posted.

Coordinates and bearings on Montana Lambert Grid North Zone



Sec. 20 Twp. 29 N., R. 28 W., M.P.M.