

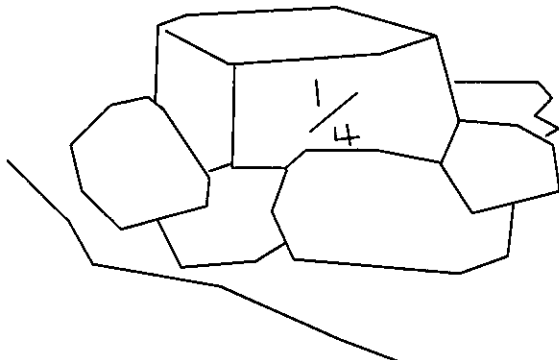
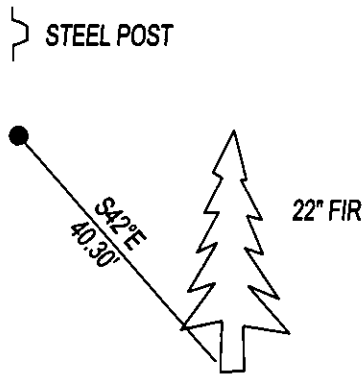
CERTIFIED CORNER RECORDATION

CORNER E1/4 SEC. 31 T. 29N R. 28W, P.M.M., LINCOLN COUNTY

RECORD : LIMESTONE 12x8x6 WITH 1/4 ON WEST FACE, FROM WHICH;
8" PINE BEARS S42°30'E 40.26' MARKED 1/4 S32 BT.
8" PINE BEARS S83°15'W 22.44' MARKED 1/4 S31 BT.

FOUND: STONE WITH 1/4 ON WEST FACE IN A COLLAR OF STONE ON
TOP OF A 3' HIGH ROCK OUTCROP, FROM WHICH;
22" FIR BEARS S42°E 40.30' WITH VISIBLE SCRIBE.

MAINTENANCE: PAINTED STONE RED AND ADDED STONES TO ROCK MOUND AND SET A 5 FOOT
STEEL POST 3 FEET NORTH AND PAINT RED BANDS ON BT.



SKETCH OF CORNER

CERTIFICATION

I, DAN CROFT
CERTIFY THE INFORMATION SHOWN HEREIN IS TRUE AND CORRECT.

SIGNATURE GROUND PARTY CHIEF

I, MARC J. CARSTENS
CERTIFY THAT THIS CORNER RECORD CORRECTLY REPRESENTS WORK
PERFORMED BY ME OR UNDER MY DIRECTION IN COMPLIANCE WITH THE
"CORNER RECORDATION ACT" (70-22-101, ET SEQ., M.C.A.)

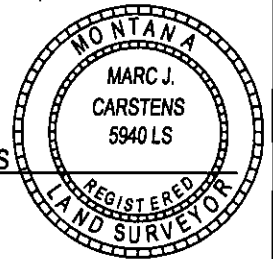

SIGNATURE OF SURVEYOR & SEAL

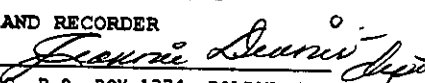
9-26-2014

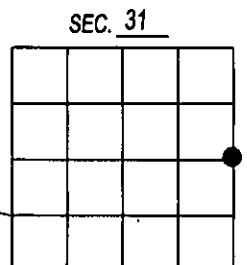
DATE

CARSTENS SURVEYING
EMPLOYER

5940LS
REG. NO.



OFFICE OF CLERK AND RECORDER, COUNTY OF LINCOLN
THIS "CORNER RECORD" WAS FILED FOR REC 253664 BOOK: CCR CC&R'S PAGE: 12140 Pages: 1
AND IS ASSIGNED PAGE NO. _____, IN B STATE OF MONTANA LINCOLN COUNTY
RECORDED: 10/01/2014 12:00 KOI: CC&R'S
TAMMY D. LAUER CLERK AND RECORDER
FEE: \$0.00 BY: 
FOR: CARSTENS LAND SURVEYING P.O. BOX 1374, POLSON, MONTANA
COUNTY OFFICIAL
CROSS INDEX NO. X-5 T. 29N R. 28W, P.M.M.
ADOPTED JULY 1, 1981, MONTANA BOARD OF PROFESSIONAL ENGINEERS & LAND SURVEYORS

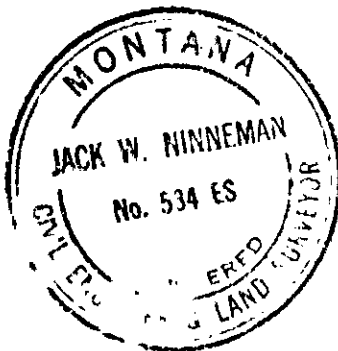


● CORNER THIS SHEET

THIS CORNER WAS REESTABLISHED FROM RECORD TIE SHOWN ON
 BURLINGTON NORTHERN INC. - GREAT NORTHERN LINE CHANGE
 SHEET 4 AS BUILT - DRAWING E-53-33-81 FURNISHED BY
 SEATTLE DISTRICT, CORPS OF ENGINEERS FOR USE UNDER
 CONTRACT NO. DACW 67-72-C-0073

**Twp. 29 N., R. 29 W.
 M.P.M.**

Coordinates and bearings on
 Montana Lambert Grid
 North Zone



27	26
34	35

Y510618.77
 X593513.66

2095.04'
 MAIN LINE
 Sta. 4741+01.0
 N 4°18'01" E
 Sec. 34
 Sec. 35



Y503258.45
 X592937.59

Set a standard brass cap
 monument in mound of stone
 for $\frac{1}{4}$ Corner from which a tagged
 post 7 feet high bears East 8.0 feet.
 No bearing trees available.

$\frac{1}{4}$ Corner —
 Y 502708.02
 X 592896.20

