

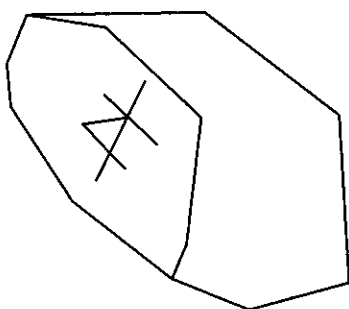
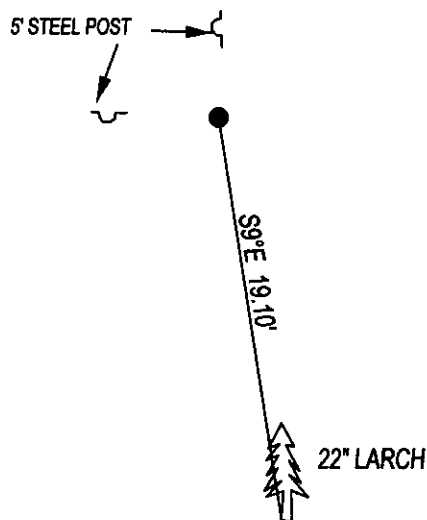
CERTIFIED CORNER RECORDATION

CORNER E1/4 SEC. 18 T. 29N R. 28W P.M.M., LINCOLN COUNTY

RECORD BLM 1966: THE 1/4 CORNER OF SECTIONS 17 AND 18 MONUMENTED WITH A LIMESTONE 16x12x4, FIRMLY SET AND MARKED WITH 1/4 ON WEST FACE AND WITNESSED BY THE ORIGINAL BEARING TREES AT THE CORNER POINT SET A IRON POST, 30" LONG 2 1/2" DIAM., 24" INTO THE GROUND, WITH BRASS CAP. 16" LARCH BEARS N11°15'E 29 LKS MARKED WITH OVERGROWN BLAZE. 8" PINE BEARS N34°W 17 LKS SCRIBED 1/4 S18 BT. BURY THE ORIGINAL STONE ALONGSIDE THE IRON POST.

FOUND: NO EVIDENCE OF BRASS CAP, ORIGINAL STONE 10x4x2 ABOVE GROUND WITH 1/4 ON WEST FACE, FROM WHICH; 22" LARCH BEARS S9°E 19.10' MARKED WITH OVERGROWN BLAZE.

MAINTENANCE: REMOVED SMALL TREES AND PAINTED STONE RED.
SET 5 FOOT STEEL POTS 1 FOOT NORTH AND 1 FOOT WEST OF CORNER.



SKETCH OF CORNER

CERTIFICATION

I, DAN CROFT
CERTIFY THE INFORMATION SHOWN HEREIN IS TRUE AND CORRECT.

SIGNATURE GROUND PARTY CHIEF

I, MARC J. CARSTENS
CERTIFY THAT THIS CORNER RECORD CORRECTLY REPRESENTS WORK PERFORMED BY ME OR UNDER MY DIRECTION IN COMPLIANCE WITH THE "CORNER RECORDATION ACT" (70-22-101, ET SEQ., M.C.A.)


SIGNATURE OF SURVEYOR & SEAL

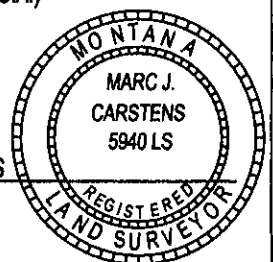
02-28-13

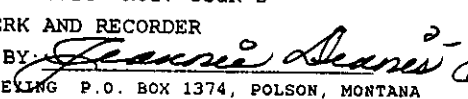
DATE

CARSTENS SURVEYING

EMPLOYER

5940LS
REG. NO.

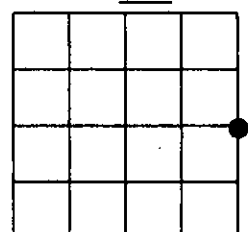


OFFICE 243791 BOOK: CCR CC&R'S PAGE: 12016 Pages: 1
THIS "C" STATE OF MONTANA LINCOLN COUNTY
RECORDED: 03/04/2013 10:14 KOI: CC&R'S
AND IS/ TAMMY D. LAUER CLERK AND RECORDER
FEE: \$0.00 BY: 
COUNTY FOR: CARSTENS LAND SURVEYING P.O. BOX 1374, POLSON, MONTANA

CROSS INDEX NO. L-5 T. 29N R. 28W P.M.M.

ADOPTED JULY 1, 1981, MONTANA BOARD OF PROFESSIONAL ENGINEERS & LAND SURVEYORS

SEC. 18



● CORNER THIS SHEET

