

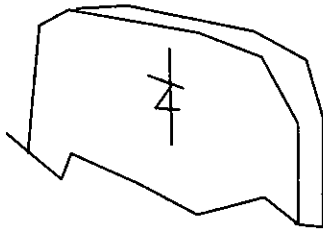
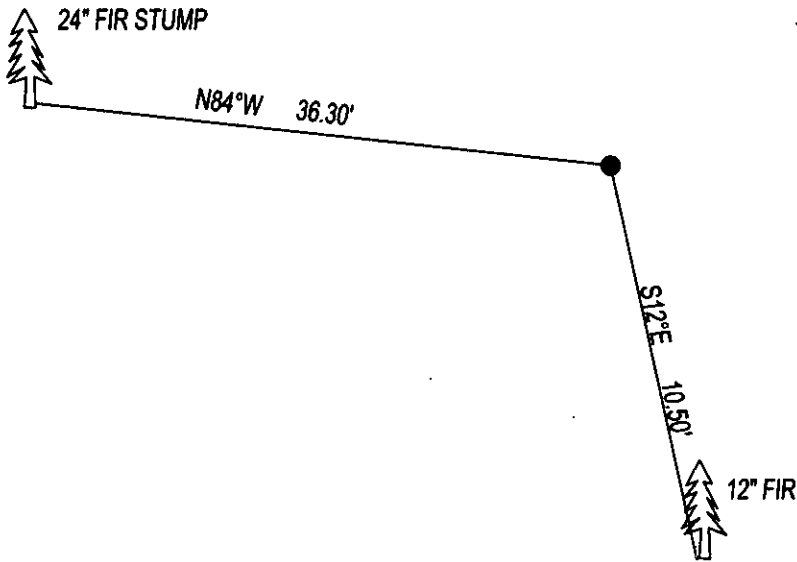
CERTIFIED CORNER RECORDATION

CORNER N1/4 SEC. 18 T. 29N, R. 28W, P.M.M., LINCOLN COUNTY

GLO RECORD: SET A SLATE STONE 12x12x4, 8" INTO THE GROUND WITH 1/4 ON NORTH FACE, FROM WHICH:
 7" FIR BEARS S54°15'W 66.0' SCRIBED 1/4 S18 BT.
 6" FIR BEARS N83°45'W 36.30' SCRIBED 1/4 S7 BT.

FOUND: STONE 12x4x4 ABOVE GROUND WITH 1/4 ON NORTH, FROM WHICH;
 24" FIR STUMP BEARS N84°W 36.30' SCRIBE OVERGROWN.

MAINTENANCE: REMOVED TREE LIMBS FROM CORNER AND PAINTED STONE RED.
 NEW BT 12" FIR BEARS S12°E 10.50' SCRIBED RM.
 SET 5 FOOT STEEL POSTS 1 FOOT EAST AND 2 FEET SOUTH FROM CORNER.
 ATTACHED BT TAGS AND PAINTED A 6" BAND ON BT'S.



SKETCH OF CORNER

CERTIFICATION

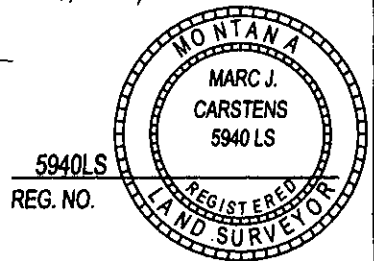
I, DAN CROFT
 CERTIFY THE INFORMATION SHOWN HEREIN IS TRUE AND CORRECT.

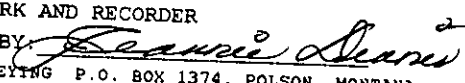
SIGNATURE GROUND PARTY CHIEF

I, MARC J. CARSTENS
 CERTIFY THAT THIS CORNER RECORD CORRECTLY REPRESENTS WORK
 PERFORMED BY ME OR UNDER MY DIRECTION IN COMPLIANCE WITH THE
 "CORNER RECORDATION ACT" (70-22-101, ET SEQ., M.C.A.)

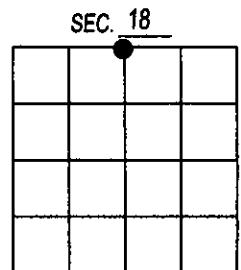

 SIGNATURE OF SURVEYOR & SEAL

02-08-13
 DATE
CARSTENS SURVEYING
 EMPLOYER



OFFICE OF CLERK AND RECORDER COUNTY OF LINCOLN
 THIS "COI" 243790 BOOK: CCR CC&R'S PAGE: 12015 Pages: 1
 STATE OF MONTANA LINCOLN COUNTY
 AND IS A: RECORDED: 03/04/2013 10:12 KOI: CC&R'S
 TAMMY D. LAUER CLERK AND RECORDER
 FEE: \$0.00 BY: 
 COUNTY FOR: CARSTENS LAND SURVEYING P.O. BOX 1374, POLSON, MONTANA
 CROSS INDEX NO. J-3 T. 29N, R. 28W, P.M.M.

ADOPTED JULY 1, 1981, MONTANA BOARD OF PROFESSIONAL ENGINEERS & LAND SURVEYORS



● CORNER THIS SHEET



1. The first part of the document
 discusses the general principles
 of the system. It covers the
 basic concepts and the overall
 structure of the system.

2. The second part of the document
 describes the implementation of the
 system. It details the various
 components and their interactions.
 This section includes a detailed
 description of the hardware and
 software requirements.

3. The third part of the document
 discusses the testing and
 validation of the system. It
 outlines the test cases and the
 results of the tests. This section
 also includes a discussion of the
 system's performance and its
 reliability.

4. The fourth part of the document
 discusses the future work and
 the conclusions of the project. It
 identifies the areas for further
 research and the overall impact
 of the system.