

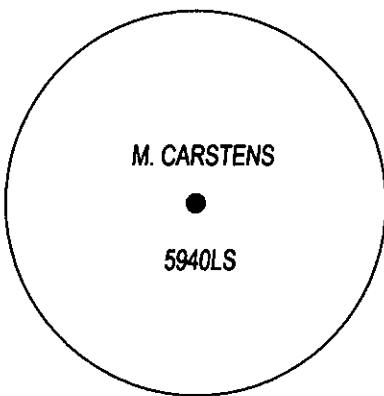
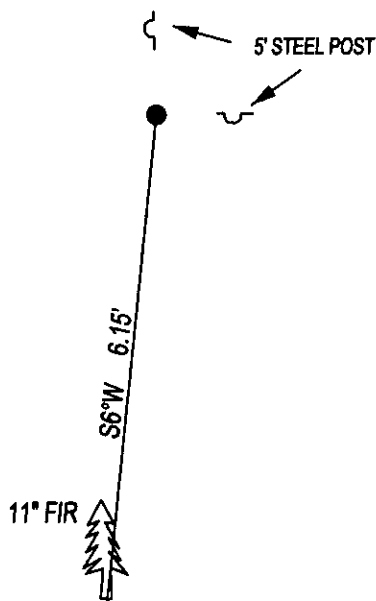
CERTIFIED CORNER RECORDATION

CORNER C1/4 SEC. 18 T. 29N R. 28W P.M.M., LINCOLN COUNTY

RECORD: NONE

FOUND: 1' PIPE NO RECORD. PIPE DOESN'T FIT CORNER POSITION AND IS NOT ACCEPTED.

SET: 5/8"x24" REBAR WITH YPC STAMPED AS SHOWN, FROM WHICH;
11" FIR BEARS S6°W 6.15' WITH OVERGROWN SCRIBE AND LOCATION POSTER.
SET 5' STEEL POSTS 1 FOOT NORTH AND 1 FOOT EAST OF CORNER.
ATTACHED BT TAG AND PAINTED 6" BAND ON BT.



SKETCH OF CORNER

CERTIFICATION

I, DAN CROFT
CERTIFY THE INFORMATION SHOWN HEREIN IS TRUE AND CORRECT.

SIGNATURE GROUND PARTY CHIEF

I, MARC J. CARSTENS
CERTIFY THAT THIS CORNER RECORD CORRECTLY REPRESENTS WORK
PERFORMED BY ME OR UNDER MY DIRECTION IN COMPLIANCE WITH THE
"CORNER RECORDATION ACT" (70-22-101, ET SEQ., M.C.A.)

M. J. Carstens
SIGNATURE OF SURVEYOR & SEAL

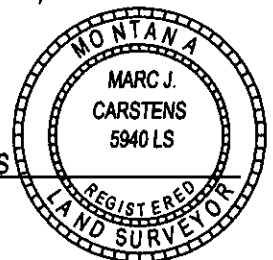
02-28-13

DATE

CARSTENS SURVEYING

EMPLOYER

5940LS
REG. NO.

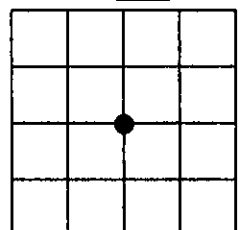


OFF 243788 BOOK: CCR CC&R'S PAGE: 12013 Pages: 1
THI STATE OF MONTANA LINCOLN COUNTY
RECORDED: 03/04/2013 10:05 KOI: CC&R'S
ANI TAMMY D. LAUER CLERK AND RECORDER
FEE: \$0.00 BY: Deanna Lauer Deputy
COL. FOR: CARSTENS LAND SURVEYING P.O. BOX 1374, POLSON, MONTANA

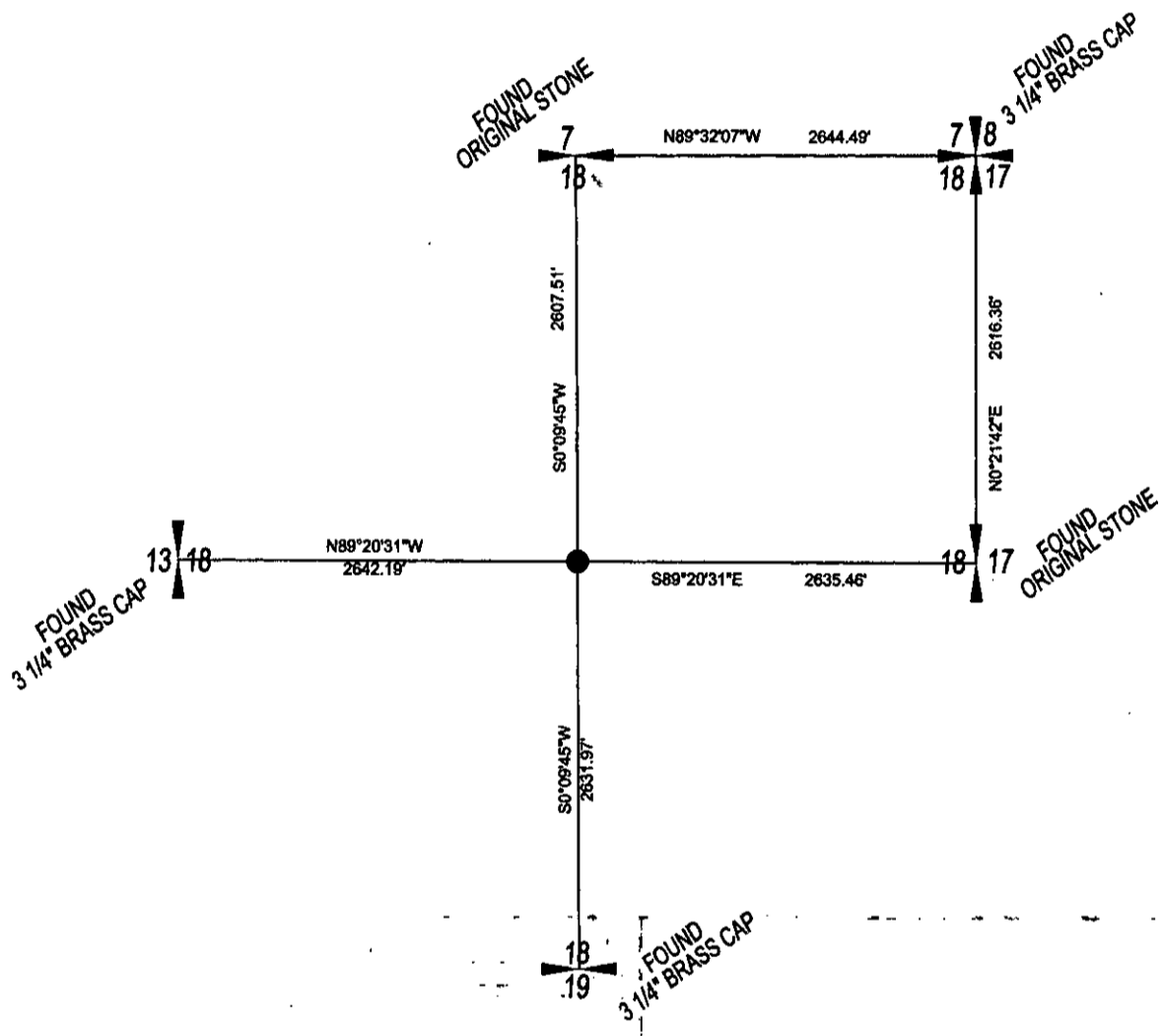
CROSS INDEX NO. L-3 T. 29N R. 28W P.M.M.

ADOPTED JULY 1, 1981, MONTANA BOARD OF PROFESSIONAL ENGINEERS & LAND SURVEYORS

SEC. 18



● CORNER THIS SHEET



1111 1111 1111 1111 1111 1111
1111 1111 1111 1111 1111 1111
1111 1111 1111 1111 1111 1111
1111 1111 1111 1111 1111 1111