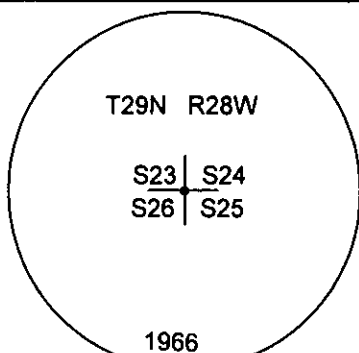
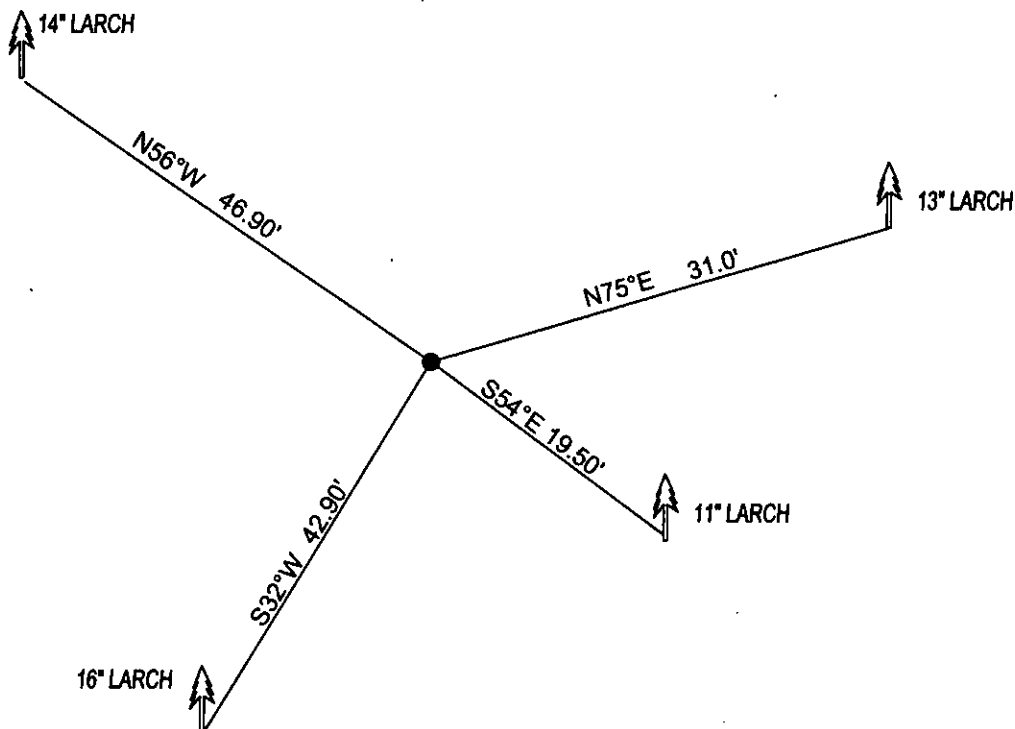


CERTIFIED CORNER RECORDATION

Corner NE CORNER SEC.26 T. 29N R. 28W P.M.M. County LINCOLN

FOUND: 3 1/4" BRASS CAP STAMPED AS SHOWN, FROM WHICH:
 13" LARCH BEARS N75°E 31.0' SCRIBE OVERGROWN.
 11" LARCH BEARS S54°E 19.50' SCRIBE OVERGROWN.
 16" LARCH BEARS S32°W 42.90' WITH OVERGROWN SCRIBE.
 14" LARCH BEARS N56°W 46.90' WITH OVERGROWN SCRIBE.

MAINTENANCE: REMOVED BRUSH FROM CORNER AREA. SET 5 FOOT STEEL POSTS 2 FEET SOUTH OF CORNER
 ATTACHED BT TAGS AND PAINTED A RED 6" BAND AND SCRIBE RED



SKETCH OF CORNER

CERTIFICATION
 I, DAN CROFT
 certify the information shown herein is true and correct.

Signature Ground Party Chief
MARC J. CARSTENS
 certify that this Corner Record correctly represents work performed by me or under my direction in compliance with the "Corner Recordation Act" (70-22-101, et seq., M.C.A.)

Signature of Surveyor & Seal
[Signature]

Date: 06-2011 Reg No. 5940 LS
 Employer: CARSTENS LAND SURVEYING



Office of Clerk and Recorder, County of LINCOLN . This "corner

record" was filed for record on

was noted on the cross-index;

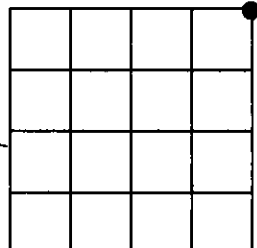
book No. _____

233381 BOOK: CCR CC&R'S PAGE: 11900 Pages: 1
 STATE OF MONTANA LINCOLN COUNTY
 RECORDED: 06/28/2011 10:15 KOI: CC&R'S
 TAMMY D. LAUER CLERK AND RECORDER
 FEE: \$0.00 BY: [Signature]
 TO: CARSTENS LAND SURVEYING P.O. BOX 1374, POLSON, MONTANA

Cross Index No. R-21 T. 29N R. 28W PMM

Adopted July 1, 1981, Montana Board of Professional Engineers & Land Surveyors

Sec. 26



• corner this sheet