

CERTIFIED LAND CORNER RECORDATION
(REFERENCE FSH 5681.65)

DESCRIPTION OF CORNER EVIDENCE FOUND, AND ORIGINAL RECORD (IF KNOWN)

No physical evidence of the original stone or bearing trees was found. The BT's listed were small and evidently died and rotted away; several rocks similar to the record stone were in the vicinity, but none had discernable scribing or notching.

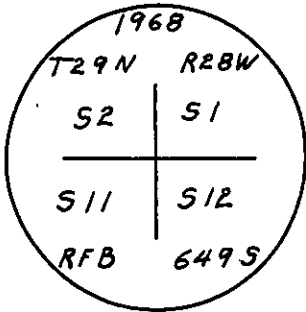
The corner 1/2 mile north is lost or obliterated, as are the corners 1/2 mile and one mile east. The original field notes have some apparent discrepancies and errors in topographic calls and distances, which makes reconstruction of the field work difficult.

There is enough line tree evidence remaining from the original survey to replace the corner more nearly in its original position than by double proportionation. The procedure used to re-establish this corner was as follows:

Several of the original blazed line trees for distances of up to ten chains east, west, north and south were flagged, and a random line traverse run to a known corner one-half mile west and to the township line one mile east. By using the old line tree evidence, and corroborating this by proportioning the actual length of the lines measured, the most probable position of the original corner was located and remonumented.

DESCRIPTION OF MONUMENT AND ACCESSORIES ESTABLISHED
TO PERPETUATE THE ORIGINAL LOCATION OF THIS CORNER:

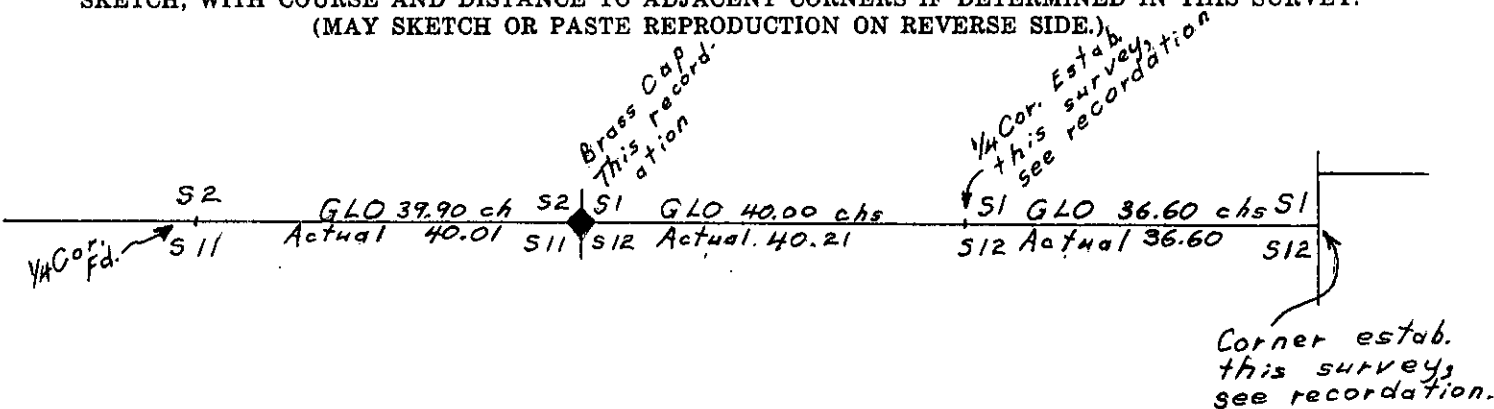
Date of work: 5/23/68



Set a 2" x 30" pipe two feet deep with a mound of stone surrounding the pipe. Brass cap stamped as shown, from which:

- A Larch, 10" dbh bears S 7°49'W, 11-1/2 links, scribed S11RM
- A Larch, 8" dbh bears S46°28'E, 50-1/2 links, scribed S12RM
- A Larch, 8" dbh bears N63°12'E, 36-1/2 links, scribed S1RM
- A Larch, 8" dbh bears N87°48'W, 29 links, scribed S2RM

SKETCH, WITH COURSE AND DISTANCE TO ADJACENT CORNERS IF DETERMINED IN THIS SURVEY.
(MAY SKETCH OR PASTE REPRODUCTION ON REVERSE SIDE.)



Surveyor's Seal

I, _____
certify that the information shown herein is true and correct.

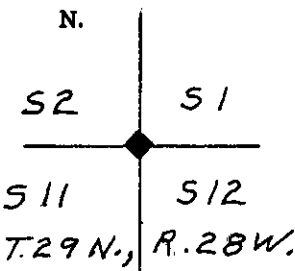
Signature of Ground Party Chief

I, ROBERT F. BURDICK
certify that I have carefully performed or reviewed the work done on the diagrammed corner as reported on this recordation form and approve the same.

Robert F. Burdick
Signature of Surveyor

649S
Registration Number

DIAGRAM OF CORNER:



◆ = Corner recorded on the sheet

Office of Clerk and Recorder, County of Lincoln

This "corner record" was filed for record on the 14th day of June 1968, was noted on the cross-index plat and is

assigned page No. 112, in book No. 1

ELEANOR L. VAUGHN, *Eleanor L. Vaughn*
County Official

Cross Index No. E-21 T. 29 R. 28 Mer.