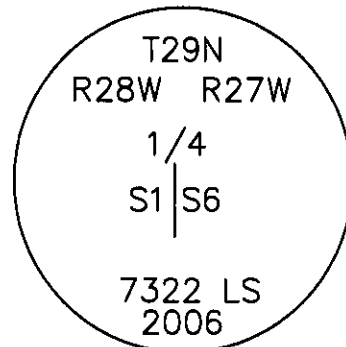


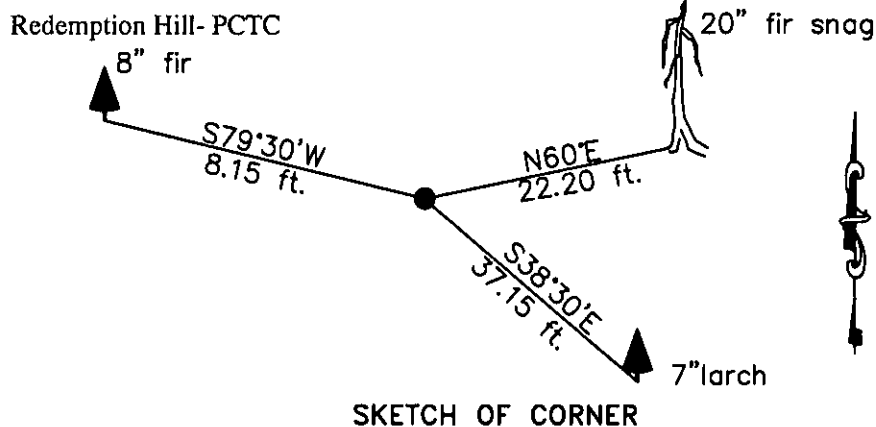
# CERTIFIED CORNER RECORDATION

Corner E 1/4 S1 T. 29 N. R. 28 W. P.M.M. Lincoln County

- I. Record: 1902 original GLO survey by P. Bickel W. Filer: Set a trachite stone 26x8x5 ins. 20 ins. in the ground, marked 1/4 on the W. face, from which:
- A fir, 12 ins. diam., bears N. 60°E., 33 lks. dist. (21.78 ft.) mkd. 1/4 S6 BT.
- A tamarack, 8 ins. diam., bears S.68°45' W., 82 lks. dist. (54.12 ft.) mkd. 1/4 S1 BT.
- II. Found: A trachite stone, 8x6x26 ins. loosely set, 24 ins. in the ground, marked 1/4 on the west face from which :
- A fir snag, 20 ins. diam., bears N.63°E., 22.20 ft. dist., with visible scribes. (Record N.60°E. 33 lks. 21.78 Ft.).
- III. Perpetuation: At the corner point, determined by the original stone monument, set a Aluminum pipe 2 1/2 ins. diam., 30 ins. long, 25 ins. in the ground, with a 3 1/4 ins. diam. Aluminum cap marked as shown below from which:
- A fir, 8 ins. diam., bears N.79°30' E., 8.15 ft. dist., scribed 1/4 S1 BT.
- A larch, 7 ins. diam., bears S.38°30'E., 37.15 ft. dist., scribed 1/4 S6 BT.
- Raise a mound of stone 2.0 Ft. base, 1 Ft. high around set monument.
- Painted faces and 6 in. wide red bands to all bearing trees and attached Land Survey Monument and Bearing Tree signs.
- Magnetic declination: 18° East
- Equipment used: Hand compass and loggers tape



Kootenai Surveyors Inc., 314 California Av., Libby, MT. 59923 (406) 293-4354



CERTIFICATION

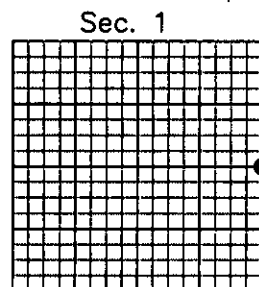
I, Levi Powell  
certify the information shown herein is true and correct.  
*[Signature]*  
Signature Ground Party Chief

I, Alvah F. Hughes  
certify that this Corner Record correctly represents work performed by me or under my direction in compliance with the "Corner Recordation Act" (70-22-101, et seq., M.C.A.)  
*[Signature]*  
Signature of Surveyor & Seal

Date 04/25/08 T. No. 7322-LS  
Employer: Kootenai Surveyors Inc.

**ALVANH F. HUGHES**  
**7322-LS**  
**REGISTERED**

Office of Clerk and Recorder, County of Lincoln This "corner record" was filed for record 211002 BOOK: CCR CC&R'S PAGE: 11190 Pages: 1  
STATE OF MONTANA LINCOLN COUNTY  
was noted on the cross-indexed: RECORDED: 04/30/2008 1:45 KOI: CC&R'S  
book No. TAMMY D. LAUER CLERK AND RECORDER  
FEE: \$0.00 BY: *[Signature]*  
TO: KOOTENAI SURVEYORS INC. P.O. BOX 393, LIBBY, MT 59923



Cross Index No. C 25 T. 29N R. 28W P.M., MT  
Adopted July 1, 1981, Montana Board of Professional Engineers & Land Surveyors

• corner this sheet

RECEIVED  
1955  
HUGHES  
ALABAMA