

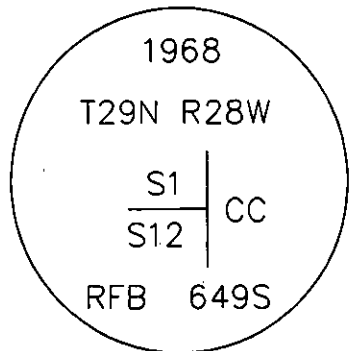
CERTIFIED CORNER RECORDATION

Corner SE COR. S1 T. 29 N. R. 28 W. P.M.M. Lincoln County

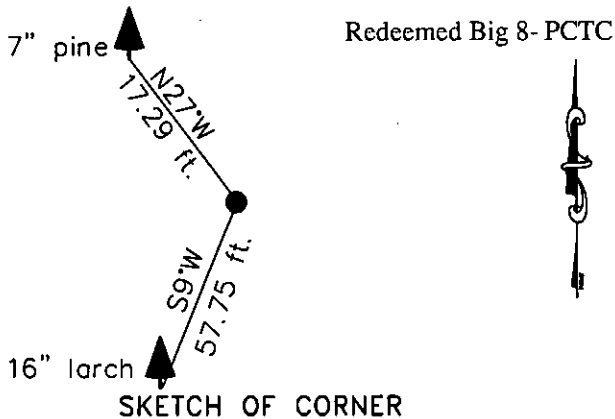
- I. Record:** 1903 original GLO survey by G. Fessenden and R. Lyman: Set a sandstone 14x12x6 ins. 9 ins. in the ground, marked CC on W., with 1 groove on N. and 5 grooves on S. face; from which:
- A pine, 4 ins. diam., bears S. 86° W., 70 lks. dist. (46.20 ft.) mkd. T29N R28W S12 BT.
 - A pine, 4 ins. diam., bears N. 26° W., 70 lks. dist. (46.20 ft.) mkd. T29N R28W S1 BT.
- 1963 Certified Corner Recordation Blk. 1 Page 111 Lincoln County records by R. Burdick, Set a 2 ins. diam. iron pipe 30 ins. long 24 ins. in the ground with brass cap from which:
- A pine, 6 ins. diam., bears N. 13° 30' W., 37.50 lks. dist. (24.75 ft.) mkd. S1 RM.
 - A larch, 10 ins. diam., bears S. 9° W., 87.50 lks. dist. (57.75 ft.) mkd. S12 RM.

- II. Found:** A 2 in. diam. iron pipe firmly set, 8 ins. above ground in a mound of stone with brass cap marked as shown below, from which:
- A larch, 16 ins. diam., bears S. 9° W., 57.75 ft. dist. with healed face.

- III. Perpetuation:** Establish one new bearing tree described below:
- A pine, 7 ins. diam., bears N. 27° W., 17.29 ft. dist., mkd. X BT.
- Painted faces and 6 in. wide red bands to all bearing trees and attached Land Survey Monument and Bearing Tree signs.
- Set a steel post on line 3 ft. West of found monument.
- Raise a mound of stone around found monument.
- Magnetic declination: 18° East
- Equipment used: Hand compass and loggers tape



Kootenai Surveyors Inc., 314 California Av., Libby, MT. 59923 (406) 293-4354



CERTIFICATION

I, Levi Powell
certify the information shown herein is true and correct.
Levi Powell
 Signature Ground Party Chief

I, Alvah F. Hughes
certify that this Corner Record correctly represents work performed by me or under my direction in compliance with the "Corner Recordation Act" (70-2-101, et seq., M.C.A.)
Alvah F. Hughes
 Signature of Surveyor & Redemptor

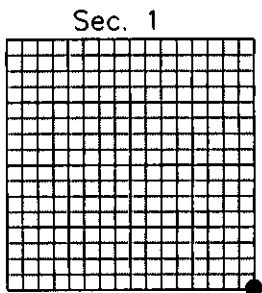
Date: 12/20/2006 Reg. No. 7322

Employer: Kootenai Surveyors

Office of Clerk and Recorder, County of Lincoln. This "corner record" was filed for record in 200812 BOOK: CCR CC&R'S PAGE: 11017 Pages: 1

was noted on the cross- STATE OF MONTANA LINCOLN COUNTY
 book No. RECORDED: 02/06/2007 1:23 KOI: CC&R'S
TAMMY D. LAUER CLERK AND RECORDER
 FEE: \$0.00 BY: *Tammy D. Lauer*
 TO: FILED

Cross Index No. E 5 T. 29N R. 28W P.M., MT



Adopted July 1, 1981, Montana Board of Professional Engineers & Land Surveyors