

CERTIFIED CORNER RECORDATION

Corner 1/4 S33 T 29 N. R. 28 W. P.M.M. LINCOLN County

I. Record: 1893 GLO Survey of the 7th Standard Parallel North, through Ranges 28, 29, 30, 31, 32 & 33 West, by Daniel P. Mumbure; Set a post, 3 ft. long, 3 ins. square, 24 ins. in the ground for standard $\frac{1}{4}$ Sec. Cor., marked S.C. 1/4 S on N. face from which:

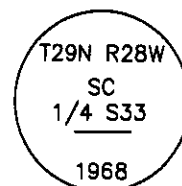
- A fir, 14 ins. diam., bears N.6 $\frac{1}{4}$ ° W., 22 lks. dist., marked S.C.1/4 S BT.
- A fir, 24 ins. diam., bears S.59°W., 38 lks. dist., marked S.C.1/4 S BT.

1968 BLM Remonumentation by W. Damm, J. French & D. Lindenberg: The standard $\frac{1}{4}$ sec. cor. of sec. 33 as determined from the original bearing trees.

At the corner point:

Set an iron post, 30 ins. long, 2 $\frac{1}{2}$ ins. diam., 24 ins. in the ground, with brass cap mkd.

from which



the original bearing trees:

A fir, 30 ins. diam., bears S.59°W., 38 lks. dist., mkd. with an overgrown blaze (record).

A fir, 18 ins. diam., bears N.6 $\frac{1}{4}$ ° W., 22 lks. dist., mkd. with an overgrown blaze. (record).

The new bearing tree:

A pine, 10 ins. diam., bears N.52°W., 103 lks. dist., mkd. $\frac{1}{4}$ S33 SC BT.

II. Found: A BLM brass cap on a 2 $\frac{1}{2}$ inch daim. iron pipe, firmly set, 5 ins. above ground, marked as shown, from which:

A fir, wind thrown snag & stump, bears S.60°W., 25.1 ft. dist., with a healed face.

A pine, 12 ins. diam., bears N.52°W., 86.0 ft. dist., marked $\frac{1}{4}$ S33 SC BT. (record)

A fir, 24 ins. diam., bears N.6°W., 14.6 ft. dist., marked with a healed face.

dist. 103 lks. 67.98', BT tag by ART states 130 lks. 85.8')

III. Painted faces and 6 inch wide red bands on all bearing trees and attached Land Survey Monument and Bearing Tree signs.

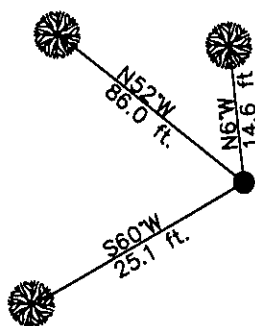
Date of Fieldwork: 6/6/2006

Survey crew: Steve Boyer

Magnetic declination: 20° East assumed

Equipment used: Hand compass and loggers tape

U.S. Forest Service, Supervisors Office, 1101 Hwy. 2 West, Libby, MT 59923 (406) 293-6211



SKETCH OF CORNER

NOT TO SCALE

CERTIFICATION

I, Steven A. Boyer
certify the information shown herein is true and correct.

Signature Ground Party Chief

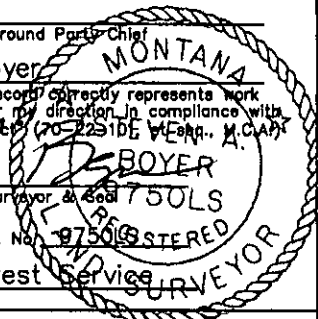
I, Steven A. Boyer

certify that this Corner Record correctly represents work performed by me or under my direction in compliance with the "Corner Recordation Act" (70-2231 DE, M.C.A.)

Steven A. Boyer
Signature of Surveyor & Seal

Date: 06/21/2006 Reg. No. 9750

Employer: U. S. Forest Service



Office of Clerk and Recorder, County of Lincoln

199638 BOOK: CCR CC&R'S PAGE: 10972 Pages: 1

STATE OF MONTANA LINCOLN COUNTY

RECORDED: 12/13/2006 12:52 KOI: CC&R'S

CORAL M. CUMMINGS CLERK AND RECORDER

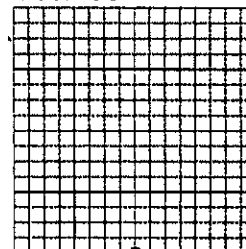
FEE: \$0.00

BY:

TO: US FOREST SERVICE

Jeanie Dennis
Deputy

Sec. 33



Cross Index No. Z-11 T. 29N. R. 28W. P.M., MT

Adopted July 1, 1981, Montana Board of Professional Engineers & Land Surveyors

• corner this sheet