

# CERTIFIED CORNER RECORDATION

Corner NW cor. S 16 T. 29 N. R. 28 W. P.M.M. LINCOLN County

I. Record: 1903 - GLO survey by G. Fessenden and R. Lyman, set a slate stone 24x18x6 ins., 18 ins. in the ground, marked with 4 notches on S. and E. edges, from which:

- A pine, 8 ins. diam., bears N4°30'E. 100 lks. dist. (66.00 ft), mkd. T29N R28W S9 BT.
- A Fir, 10 ins. diam., bears S34°30'E. 33 lks. dist. (21.78 ft), mkd. T29N R28W S16 BT.
- A pine, 10 ins. diam., bears S56°30'W. 55 lks. dist. (36.30 ft), mkd. T29N R28W S17 BT.
- A pine, 10 ins. diam., bears N62°30'W. 40 lks. dist. (26.40 ft), mkd. T29N R28W S8 BT.

II. Found:

- A fir 17 ins. diam., bears S34°30'E., 21.80 ft. dist. with visible scribing.
- A pine 20 ins. diam., bears S56°30'W., 36.30 ft. dist. with visible scribing.
- A pine 16 ins. diam., bears N.62°30'W., 26.40 ft. dist. with visible scribing.

III. Perpetuation: At a position determined from the original Bearing trees, we set a Alum. pipe 30 ins. long 24 ins. in the ground, with a 3 1/4 in. diam. Alum. cap marked as shown below from which:

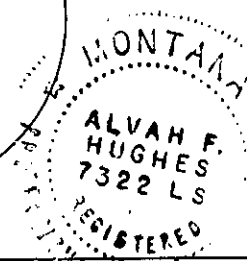
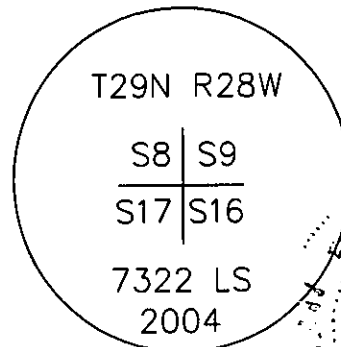
A fir 10 ins. diam., bears N82°E., 27.00 ft. dist., mkd. T29N R28W S9 BT.

Painted faces and 6 in. wide red bands to all bearing trees and attached bearing tree and Land Survey Monument signs.

Set a steel fence post 4 ft. E. of corner.

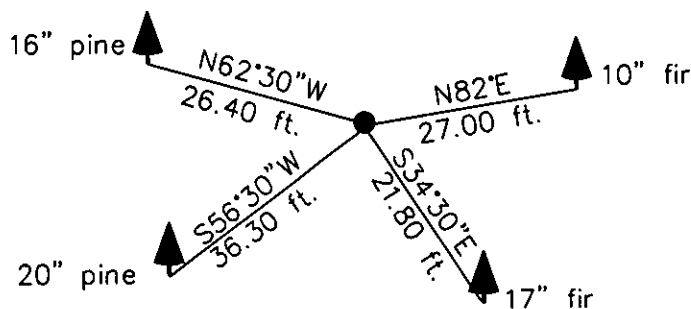
Magnetic declination: 20° East assumed

Equipment used: Hand compass and loggers tape



Kootenai Surveyors Inc., 314 California Av., Libby, MT. 59923 (406) 293-4354

KSI Project: East Richards - PCTC



SKETCH OF CORNER

CERTIFICATION

I. Doug Schuhknecht  
certify the information shown herein is true and correct.

*[Signature]*  
Signature Ground Party Chief

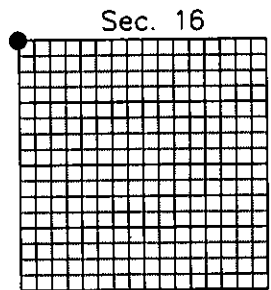
I. Alvah F. Hughes  
certify that this Corner Record correctly represents work performed by me or under my direction in compliance with the "Corner Recordation Act" (70-22-101, et seq., M.C.A.)

*[Signature]* 7322 LS  
Signature of Surveyor & Seal

Date: 12/9/2004 Reg. No. 7322-LS

Employer: Kootenai Surveyors Inc.

Office of Clerk and Recorder, County of Lincoln This "corner record" was filed for rec 181271 BOOK: CCR CC&R'S PAGE: 10722 Pages: 1  
STATE OF MONTANA LINCOLN COUNTY  
RECORDED: 12/14/2004 1:10 KOI: CC&R'S  
was noted on the cross: CORAL M. CUMMINGS CLERK AND RECORDER  
book No. \_\_\_\_\_ FEE: \$0.00 BY: *[Signature]*  
TO: FILED



Cross Index No. J 9 T. 29N R. 28W P.M., MT