

# CERTIFIED CORNER RECORDATION

Corner SW cor. S 16 T 29 N. R. 28 W. P.M.M. LINCOLN County

I. Record: 1903 - GLO survey by G. Fessenden and R. Lyman, set a slate stone 18x12x4 ins., 12 ins. in the ground, marked with 3 notches on S. and 4 notches on E. edge, from which:

- A pine, 14 ins. diam., bears N.25°E., 88 lks. dist. (58.08 ft), mkd. T29N R28W S16 BT.
- A fir, 16 ins. diam., bears S.53°E., 56 lks. dist. (36.96 ft), mkd. T29N R28W S21 BT.
- A pine, 8 ins. diam., bears S23°W., 45 lks. dist. (29.70 ft), mkd. T29N R28W S20 BT.
- A pine, 15 ins. diam., bears N33°W., 50 lks. dist. (33.00 ft), mkd. T29N R28W S17 BT.

II. Found: A pine stump, 27 ins. diam., bears N.33°W., 33.00 ft. dist. with visible scribing.

III. Perpetuation: At a position determined from the original bearing tree and survey, we set a Alum. pipe 30 ins. long 24 ins. in the ground, with a 3 1/4 in. diam. Alum. cap marked as shown below from which:

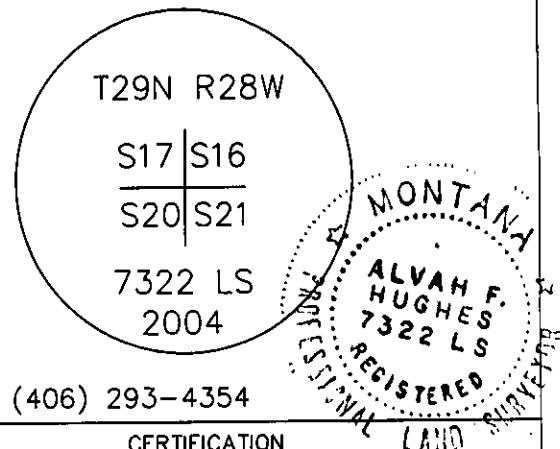
- A fir, 7 ins. diam., bears N.48°E., 25.10 ft. dist., mkd. T29N R28W S16 BT.
  - A fir, 11 ins. diam., bears S.12°E., 29.00 ft. dist., mkd. T29N R28W S21 BT.
  - A fir, 9 ins. diam., bears N.68°W., 17.40 ft. dist., mkd. T29N R28W S17 BT.
- (Note:) No live trees in the SW Quad. to establish a bearing tree.

Painted faces and 6 in. wide red bands to all bearing trees and attached bearing tree and Land Survey Monument signs.

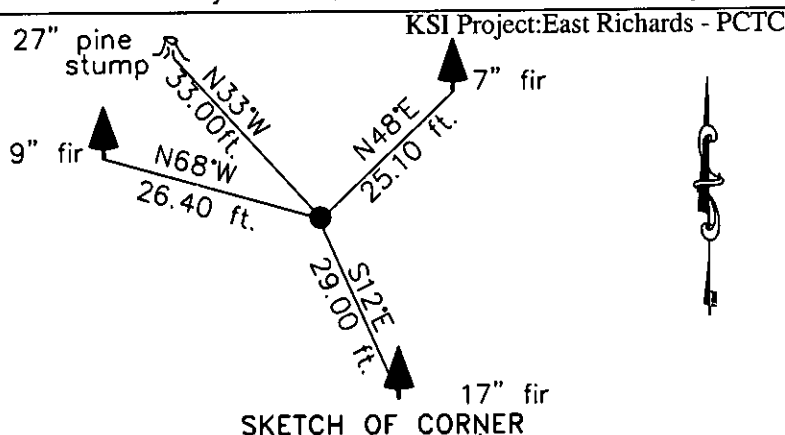
Set a steel fence post 3 ft. N. of corner.

Magnetic declination: 20° East assumed

Equipment used: Hand compass and loggers tape



Kootenai Surveyors Inc., 314 California Av., Libby, MT. 59923 (406) 293-4354



CERTIFICATION  
 I, Doug Schuhknecht  
 certify the information shown herein is true and correct.  
 Signature Ground Party Chief  
 I, Alvah F. Hughes  
 certify that this Corner Record correctly represents work performed by me or under my direction in compliance with the "Corner Recordation Act" (70-22-101, et seq., M.C.A.)  
 Signature of Surveyor & Seal  
 Date: 12/9/2004 Reg. No. 7322-LS  
 Employer: Kootenai Surveyors Inc.

Office of Clerk and Recd 181268 BOOK: CCR CC&R'S PAGE: 10719 Pages: 1  
 STATE OF MONTANA LINCOLN COUNTY  
 record" was filed for rec RECORDED: 12/14/2004 1:04 KOI: CC&R'S  
 was noted on the cross CORAL M. CUMMINGS CLERK AND RECORDER  
 book No. FEE: \$0.00 BY: Beannie Seeger  
 TO: FILED , County Official

Cross Index No. 19 N9 T. 29N R. 28W P.M., MT

Adopted July 1, 1981, Montana Board of Professional Engineers & Land Surveyors

