

CERTIFIED CORNER RECORDATION

Corner SE cor. S 16 T 29 N. R. 28 W. P.M.M. LINCOLN County

I. Record: 1903 - GLO survey by G. Fessenden and R. Lyman, set a slate stone 18x8x8 ins., 12 ins. in the ground, marked T29N on NE., and R28W on SE. with 3 notches on S. and E. edges, from which:

- A fir, 24 ins. diam., bears N60°E., 20 lks. dist. (13.20 ft), mkd. T29N R28W S15 BT.
- A fir, 18 ins. diam., bears S48°E., 22 lks. dist. (14.52 ft), mkd. T29N R28W S22 BT.
- A tamarack, 20 ins. diam., bears S14°W., 135 lks. dist. (89.10 ft), mkd. T29N R28W S21

BT.
A pine, 24 ins. diam., bears N64°30'W., 50 lks. dist. (33.00 ft), mkd. T29N R28W S16 BT.

II. Found:

- A fir stump, 18 ins. diam., bears S48°E., 14.50 ft. dist., no visible scribing.
- A tamarack stump, 20 ins. diam., bears S14°W., 89.10 ft. dist. with visible scribing.
- A pine snag, 30 ins. diam., bears N.64°30'W., 33.00 ft. dist. with visible scribing.

III. Perpetuation: At a position determined from the original Bearing trees, we set a Alum. pipe 30 ins. long 24 ins. in the ground, with a 3 1/4 in. diam. Alum. cap marked as shown below from which:

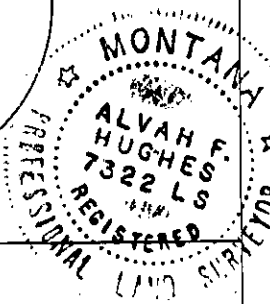
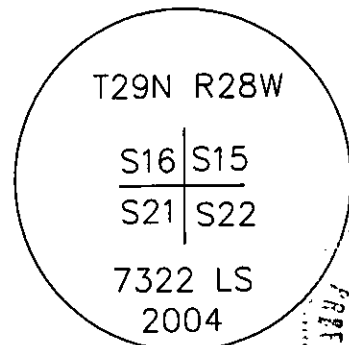
- A fir, 12 ins. diam., bears N.80°E., 26.80 ft. dist., mkd. T29N R28W S15 BT.
- A fir, 9 ins. diam., bears S.18°E., 21.20 ft. dist., mkd. T29N R28W S22 BT.
- A tamarack, 10 ins. diam., bears S.63°W., 26.40 ft. dist., mkd. T29N R28W S21 BT.
- A fir, 12 ins. diam., bears N38°W., 31.50 ft. dist., mkd. T29N R28W S16 BT.

Painted faces and 6 in. wide red bands to all bearing trees and attached bearing tree and Land Survey Monument signs.

Set a steel fence post 2 ft. N. of corner.

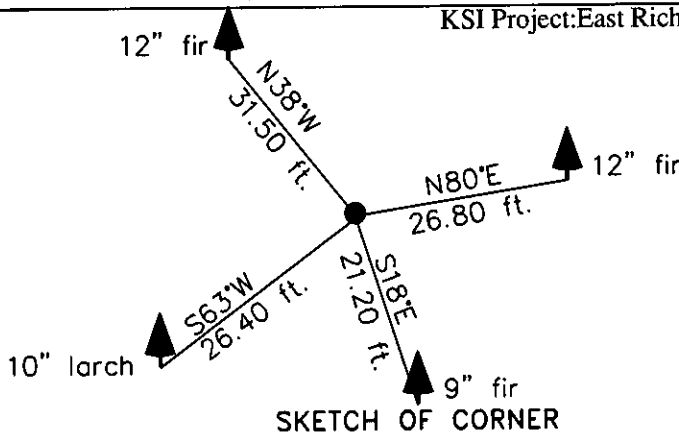
Magnetic declination: 20° East assumed

Equipment used: Hand compass and loggers tape



Kootenai Surveyors Inc., 314 California Av., Libby, MT. 59923 (406) 293-4354

KSI Project: East Richards - PCTC



SKETCH OF CORNER

CERTIFICATION

I, Doug Schuhknecht
certify the information shown herein is true and correct.

[Signature]
Signature Ground Party Chief

I, Alvah F. Hughes
certify that this Corner Record correctly represents work performed by me or under my direction in compliance with the "Corner Recordation Act" 70-22-101, et seq., M.C.A.)

[Signature]
Signature of Surveyor & Seal

Date: 12/9/2004 Reg. No. 7322-LS

Employer: Kootenai Surveyors Inc.

Office of Clerk 181267 BOOK: CCR CC&R'S PAGE: 10718 Pages: 1

record" was fil STATE OF MONTANA LINCOLN COUNTY

was noted on RECORDED: 12/14/2004 1:02 KOI: CC&R'S

book No. CORAL M. CUMMINGS CLERK AND RECORDER

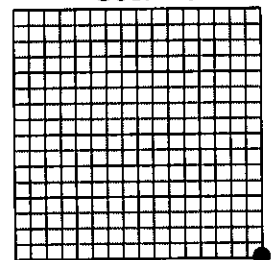
FEE: \$0.00 BY: *[Signature]*

To: FILED

County Official

[Signature]

Sec. 16



• corner this sheet

Cross Index No. N 13 T. 29N R. 28W P.M., MT

Adopted July 1, 1981, Montana Board of Professional Engineers & Land Surveyors