

CERTIFIED CORNER RECORDATION

Corner S E Sec. Cor. S 26 T. 29 N., R. 28 W., P.M.M. Lincoln County

Record :

1903 original GLO notes by George A. Fessenden.

"Set a slate stone, 14 x 12 x 6 ins., 9 ins. in the ground, for cor. of Secs. 25, 26, 35 and 36, marked with 1 notch on S. and E. edges, from which:

A pine, 4 ins. diam., bears N. 16°45' E., 5 lks. dist., marked T29N R28W S25 BT.

A pine, 6 ins. diam., bears S. 9°30' E., 18 lks. dist., marked T29N R28W S36 BT.

A pine, 3 ins. diam., bears S. 48°30' W., 7 lks. dist., marked T29N R28W S35 BT.

A pine, 3 ins. diam., bears N. 66° W., 20 lks. dist., marked T29N R28W S26 BT.

Found Evidence :

See C.O.S. on record in Lincoln County Court house recorded 1999

Perpetuation :

Set a 3 1/4 ins. alum. cap, from which:

A steel post bears N. 39° E. 13.6 ft. dist., for Sec. 25.

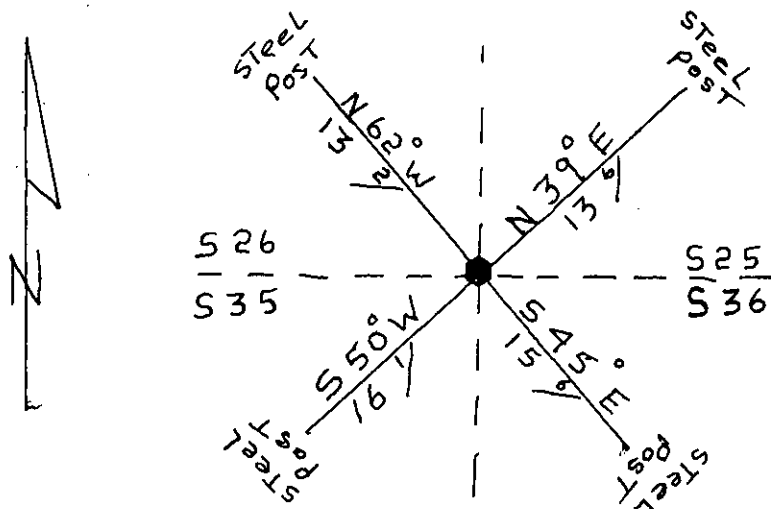
A steel post bears S. 45° E. 15.6 ft. dist., for Sec. 36.

A steel post bears S. 50° W., 16.1 ft. dist., for Sec. 35.

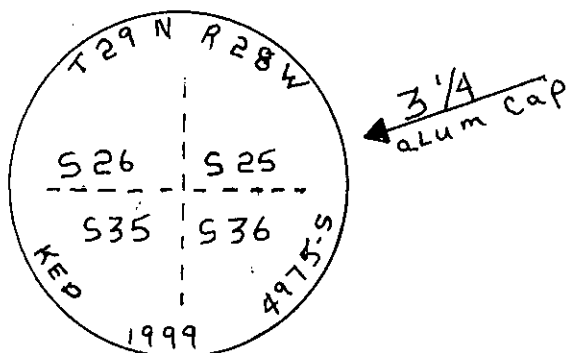
A steel post bears N. 62° W., 13.2 ft. dist., for Sec. 26.

All posts have Bearing Tree and warning tags attached.

Declination: 17° E



Sketch of Corner



CERTIFICATION

I, George R. Clark

certify the information shown herein is true and correct

Signature of Surveyor Party Chief

I, Kenneth E. Davis

certify that this Corner Record correctly represents work performed by me or under my direction in compliance with the "Corner Recordation Act"

KENNETH E. DAVIS
77-22-101, State M.C.A.

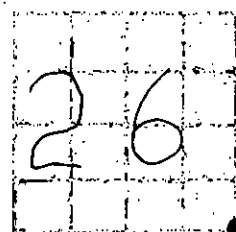
4975-S

Surveyor's Seal

Date: 2/29/2000

Employer: Surveying, Inc.

Section



Office of Clerk and Recorder, County of Lincoln

This "corner record" was filed for record on 2/29/2000

was noted on the cross-index plat and is assigned page No. 10117

in book No. Coral M. Cumming By RB

County Official

Cross Index No. S E Sec. Cor. S 26 T. 29 N., R. 28 W., PMM

• THIS CORNER