

CERTIFIED CORNER RECORDATION

Corner S 1/4 Cor. S 26 T. 29 N., R. 28 W., P.M.M. Lincoln County

Record :

1903 original GLO records by GEO A. Fessenden.

"Set a slate stone, 18 x 8 x 6 ins., 12 ins. in the ground, for 1/4 sec. cor., marked 1/4 on N. face; from which

A fir, 3 ins. in diam., bears S. 42° E., 5 lks. dist., marked 1/4 S 35 B T.

A pine, 5 ins. in diam., bears N. 57° 15' W. 22 lks. dist., marked 1/4 S 26 B T.

Found Evidence :

Found original stone with 1/4 on N. face (very loose). Found original pine Bearing Tree which bears N. 57° W 14.5 ft. dist., fallen down.

Perpetuation :

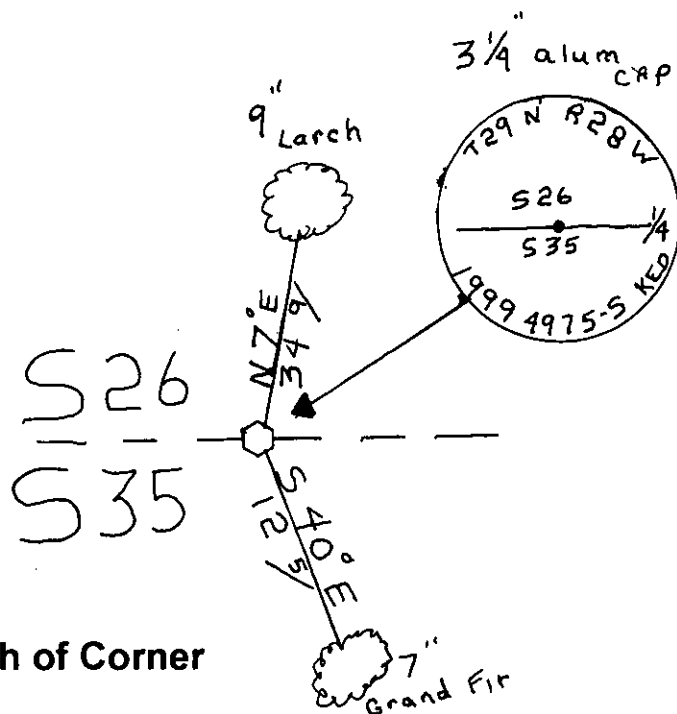
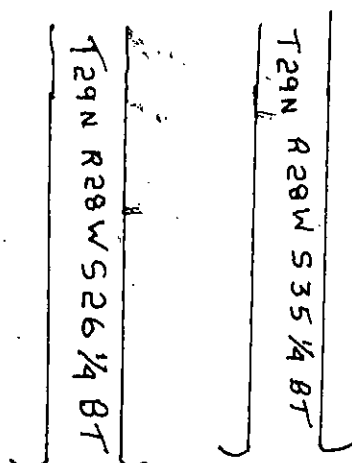
Set a 3 1/4 in. alum. cap. Established two (2) new Bearing Tree, from which:

A larch, 9 ins. in diam., bears N. 7° E., 34.9 ft. dist., for Sec. 26.

A grand fir, 7 ins. in diam., bears S. 40° E., 12.5 ft. dist., for Sec. 35.

Painted 6 inch wide red bands around Bearing Trees and attached Bearing Tree tags and warning signs.

Declination: 17° E



Sketch of Corner

CERTIFICATION

I, Rick Shaver

certify the information shown herein is true and correct

Rick Shaver
Signature of Ground Party Chief

I, Kenneth Davis

certify that this Corner Record correctly represents work performed by me or under my direction in compliance with the "Corner Recordation Act"

KENNETH DAVIS
(70-DAVIS Set sec. M.C.A.)

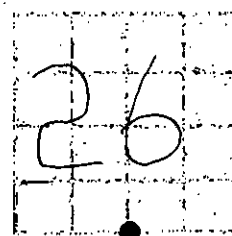
4975-S

4975-S

Date: 2/28/2000

Employer: Davis Surveying, Inc.

Section



Office of Clerk and Recorder, County of Lincoln

This "corner record" was filed for record on 2/28/2000
was noted on the cross-index plat and is assigned page No. 10412

in book No. Coral M. Cumming by DEB
County Official

Cross Index No. S 1/4 Cor. S 26 T. 29 N., R. 28 W., PMM

• THIS CORNER