

# CERTIFIED CORNER RECORDATION

Corner Sec S32 S6/S5 T. 29 N., R. 28 W., P.M.M. Lincoln County

## Record :

1903 GLO Township Boundary Survey by George A. Fessenden and R.Y. Lyman.

"Set a shale stone, 14x8x8 ins., 9 ins. in the ground, for cor. of Secs. 5, 6, 31 and 32, marked with 1 notch on W. and 5 notches on E. edge; from which:

A pine, 4 ins. dia., bears S. 51° E., 9 lks. dist., marked T29N R28W S5 BT.  
A pine, 4 ins. dia., bears S. 75½° W., 31 lks. dist., marked T29N R28W S6 BT.  
A pine, 4 ins. dia., bears N. 45° W., 7 lks. dist., marked T30N R28W S31 BT."

1916 Township Boundary Retracement and Resurvey by Armstrong, Cumming, Coffin.

"71.68 chs. The old cor. Of Secs. 5, 6, 31 and 32, which I make the cor. of Secs. 5 and 6 of T. 29 N., R. 28 W., only by cutting the markings from the Bearing Trees in Secs. 31 and 32."

## Found Evidence :

A slate stone 12x7x6 ins., 8 ins. in the ground with 5 notches on the N. face and 1 notch on the S. face (5 notches on E. edge, 1 notch on W. edge record) with scribed "X" on top, from which:

A Lodgepole Pine snag, 4 ins. diam., bears S 51° E, 6.00 ft. dist., with visible scribing.

Due to the wind stress in the area of the found monument, the other record Bearing Trees have been blown over, and to determine their position would be impossible. It was noted that all have visible scribing and all are in the 4-5 in. DBH class. Also, both Bearing Trees in Secs. 31 and 32 should have been effaced during the 1916 Township Boundary Resurvey.

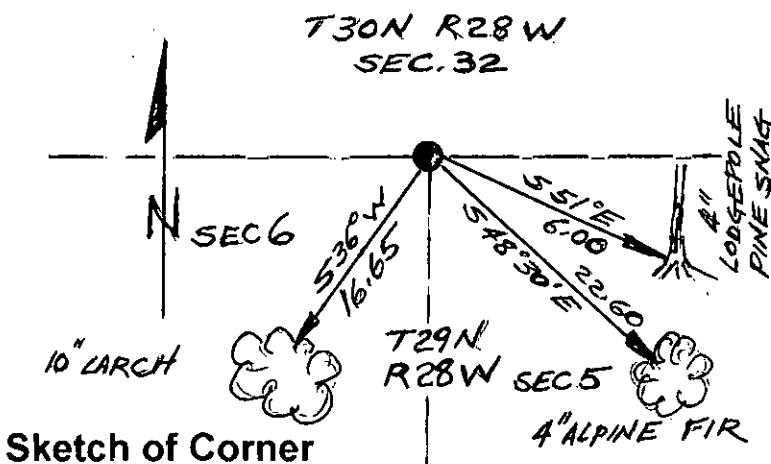
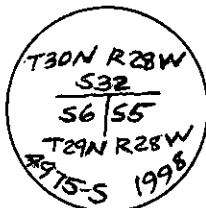
## Perpetuation :

At the found stone monument position, we replaced it with a 2 ½ in. diam. alum. pipe 30 ins. long, 26 ins. in the ground, with a 3 ¼ in. diam. alum. cap marked as shown below, from which:

A Larch, 10 ins. diam., bears S 36° W, 16.65 ft. dist., scribed (T29N R28W S6 BT).  
An Alpine Fir, 4 ins. diam., bears S 48°30' E, 22.60 ft. dist., scribed "X" BT.

Bury original stone monument in a collar of stone around set alum. monument.  
Paint 6 in. wide bands and both faces red on both Bearing Trees.  
Attach Land Survey Monument and Bearing Trees signs to both trees.  
Set a 6 in. long steel post 2 ft. in the ground with attached Land Survey Monument and Property Boundary decals S. 3.00 ft. dist. on line.

Magnetic Declination: 18° East



## CERTIFICATION

I, John Damon  
certify the information shown herein is true and correct

Signature of Ground Party Chief

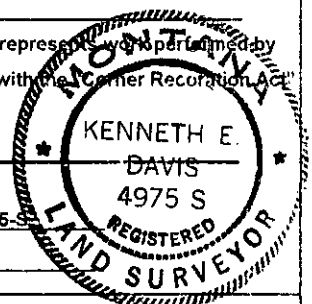
I, Kenneth E. Davis

certify that this Corner Record correctly represents work performed by me or under my direction in compliance with the Corner Recordation Act (70-22-101, et seq., M.C.A.)

Signature of Surveyor & Seal

Date: 10/31/98 Reg. No. 4975-S

Employer: Davis Surveying, Inc.



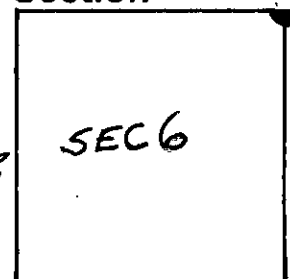
Office of Clerk and Recorder, County of Lincoln

This "corner record" was filed for record on 11-18-98 10266

was noted on the cross-index plat and is assigned page No. \_\_\_\_\_

in book No. \_\_\_\_\_  
County Official Coral M. Cumming By Ref

## Section



Cross Index No. S32 S6/S5 T. 29 N., R. 28 W., PMM

• THIS CORNER