

# CERTIFIED CORNER RECORD

Corner 1/4 S6|S5 T. 29 N., R. 28 W., P.M.M. Lincoln County

## Record :

1903 GLO Township Subdivision by George A. Fessenden and R.Y. Lyman.

"Set a slate stone, 18x15x5 ins., 12 ins. in the ground, for 1/4 sec. cor., marked 1/4 on W. face; from which:

A Fir, 12 ins. dia., bears S. 83° W., 25 lks. dist. marked 1/4 S6 BT.

A Fir, 10 ins. dia., bears S. 88° E., 58 lks. dist. marked 1/4 S5 BT."

## Found Evidence :

A Douglas Fir, 15 1/2 ins. diam., with visible scribing and old Bearing Tree tag attached.  
A Douglas Fir stump, 13 ins. diam., with a small portion of the lower overgrown face visible.

No original scribed stone monument was recovered.

## Perpetuation :

Set a 2 1/2 in. diam. alum. pipe, 30 ins. long, 26 ins. in the ground, with a 3 1/4 in. diam. alum. cap marked as shown below, from Bearing and Distance from the above mentioned found accessories, from which:

A Douglas Fir, 15 1/2 ins. diam., bears S 83° W, 16.50 ft. dist.

A Douglas Fir stump, 13 ins. diam., bears S 88° E, 35.00 ft. dist. (record 38.28 ft.).

This stump sets on the edge of an old existing logging skid road and appears to have been moved during construction.

A Douglas Fir, 18 ins. diam., bears N 65° E, 22.20 foot dist., scribed (1/4 S5 BT).

Paint 6 in. wide bands and all scribed faces red on Bearing Trees.

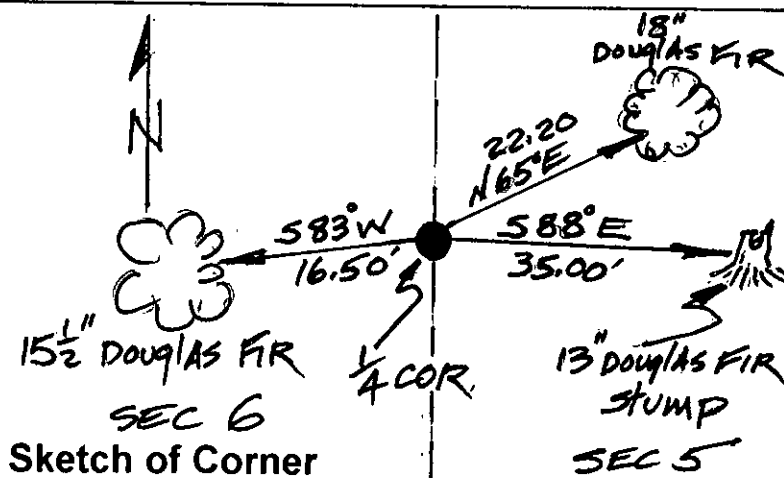
Attach Land Survey Monument and Bearing Tree signs to all trees.

Raise a collar of stone around set monument.

Set a 6 ft. long steel post 2 ft. in the ground with attached land survey monument and property boundary decals west 4.00 ft. dist. on line.



Magnetic Declination: 18° East



## CERTIFICATION

I, John Damon

certify the information shown herein is true and correct

Signature of Ground Party Chief

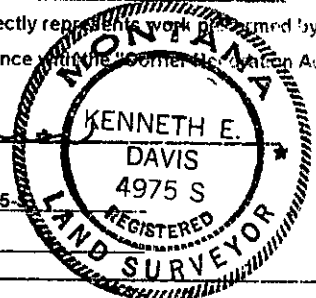
I, Kenneth E. Davis

certify that this Corner Record correctly represents work performed by me or under my direction in compliance with the "Corner Record Act" (70/22-101, et seq., M.C.A.)

Signature of Surveyor & Seal

Date: 10/31/98 Reg. No. 4975-S

Employer: Davis Surveying, Inc.



## Section

Office of Clerk and Recorder, County of Lincoln  
This "corner record" was filed for record on 11-18-98

was noted on the cross-index plat and is assigned page No. 10264

in book No. County Official



Cross Index No. 1/4 S6|S5 T. 29 N., R. 28 W., PMM

• THIS CORNER