

CERTIFIED CORNER RECORDATION

Corner 1/4 S1/S6 T. 29 N., R. 28 W., P.M.M. Lincoln County

Record :

1898 GLO Township Boundary Survey by Paul S.A. Bickel.

"Set a slate stone 16x12x4 ins. 11 ins. in the ground, for 1/4 sec. cor. marked 1/4 on W. face from which:

A Tamarack 30 ins. diam. bears N 10°10' W, 20 lks. dist. marked 1/4 S1 BT.
A Spruce 18 ins. diam. bears S 7°37' E, 37 lks. dist. marked 1/4 S6 BT."

Found Evidence :

A slate stone 18x12x6 ins., 13 ins. in the ground firmly set, marked 1/4 on the west face, from which:

A Western Larch, 24 1/2 ins. diam. bears N 6° W, 13.20 feet dist., with visible scribing.
A Douglas Fir, 24 ins. diam. (record 18 ins. diam. Spruce) bears S 8° E, 24.25 feet dist., with visible overgrown face.

Perpetuation :

At the found stone monument position, we replaced it with a 2 1/2 in. diam. alum. pipe 30 ins. long, 26 ins. in the ground with a 3 1/4 in. diam. alum. cap marked as shown below.

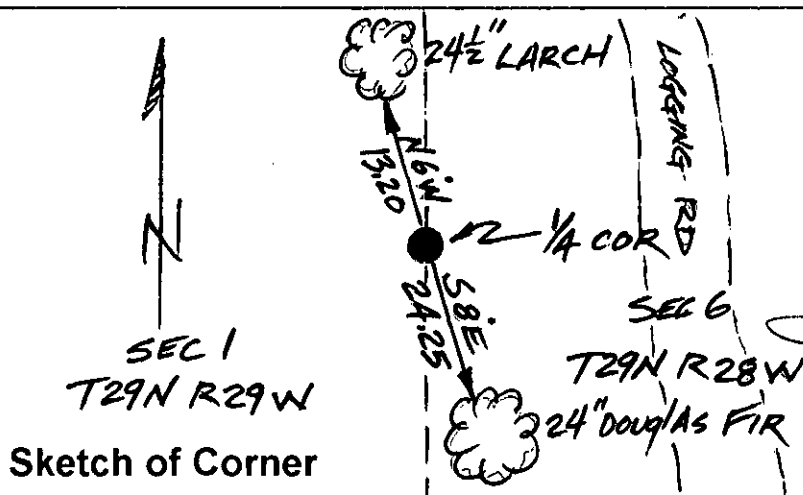
Paint 6 in. wide bands and both faces red on both Bearing Trees.

Attach Land Survey Monument and Bearing Tree signs to both trees.

Set a 6 ft. long steel post 2 ft. in the ground with attached land survey monument and property boundary decals south 4.00 ft. dist. on line.

A forest development road bears east 20.00 ft. dist. from this described monument.

Magnetic Declination: 18° East



CERTIFICATION

I, John Damon

certify the information shown herein is true and correct

John Damon
Signature of Ground Party Chief

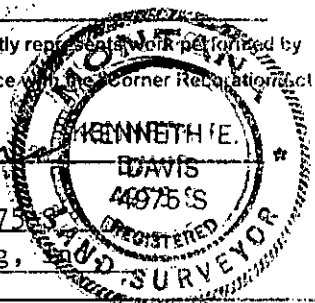
I, Kenneth E. Davis

certify that this Corner Record correctly represents work performed by me or under my direction in compliance with the Corner Recordation Act (79-22-101, et seq., M.C.A.)

Kenneth E. Davis
Signature of Surveyor & Seal

Date: 10/31/98 Reg. No. 4975-S

Employer: Davis Surveying, LLC



Office of Clerk and Recorder, County of Lincoln

This "corner record" was filed for record on 11-18-98

was noted on the cross-index plat and is assigned page No. 10263

in book No. Coral M. Cummins by RES

County Official

Section



• THIS CORNER

Cross Index No. 1/4 S1/S6 T. 29 N., R. 28 W., PMM