

# CERTIFIED LAND CORNER RECORDATION

## DESCRIPTION OF CORNER EVIDENCE FOUND, AND ORIGINAL RECORD (IF KNOWN)

ORIGINAL G.L.O. NOTES: "Set a slate stone 20 X 10 X 3 ins.15  
ins.in the gorund,for 1/4 sec.cor.,  
marked 1/4 on N. face; from which  
A pine 26 ins.diam.bears S.13°45'E.  
105 lks. dist.marked 1/4 S 23 B T.  
A pine 20 ins.diam.bears N.2°15'W. 63  
lks. dist.marked 1/4 S 14 B T."

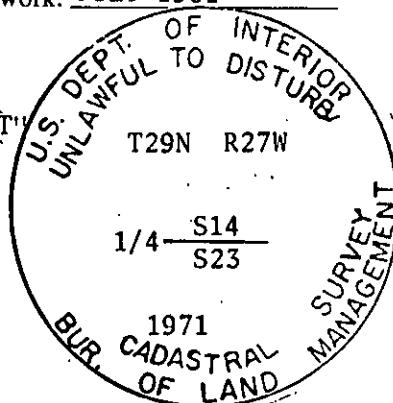
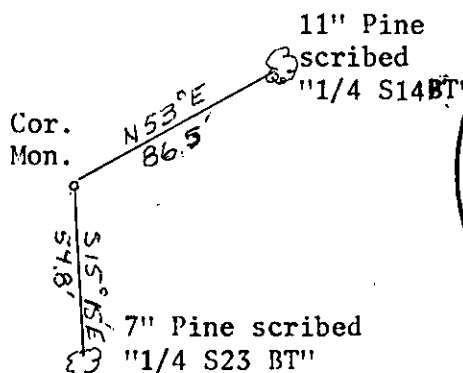
FOUND: FOUND BRASS CAP MONUMENT SET BY THE B.L.M.

## DESCRIPTION OF MONUMENT AND ACCESSORIES ESTABLISHED TO PERPETUATE THE ORIGINAL LOCATION OF THIS CORNER:

ORIGINAL EVIDENCE FOUND

NEW EVIDENCE FOUND OR SET

Date of work: JULY 1981



SKETCH, WITH COURSE AND DISTANCE TO ADJACENT CORNERS IF DETERMINED IN THIS SURVEY.  
(MAY SKETCH OR PASTE REPRODUCTION ON REVERSE SIDE.)

SEE CERTIFICATE OF SURVEY NO. 957, RECORDS OF LINCOLN COUNTY

Surveyor's Seal

I, EDWARD FOY  
certify that the information shown herein is true and correct.

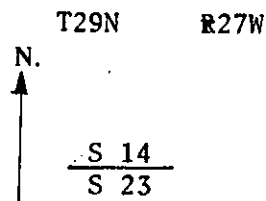
Edward Foy  
Signature of Ground Party Chief

I, JAMES BURTON  
certify that I have carefully performed or reviewed the work  
done on the diagrammed corner as reported on this recordation  
form and approve the same.

James Burton  
Signature of Surveyor

5428S  
Registration Number

## DIAGRAM OF CORNER:



= Corner recorded on the sheet

Office of Clerk and Recorder, County of Lincoln

This "corner record" was filed for record on the 14<sup>th</sup> day of October 19 81, was noted on the cross-index plat and is  
assigned page No. 1333, in book No. \_\_\_\_\_

Cleanor L. Vaughn by Sherry L. Hawks  
County Official Deputy

Cross Index No. N-19 T 29 R 27 Mer.