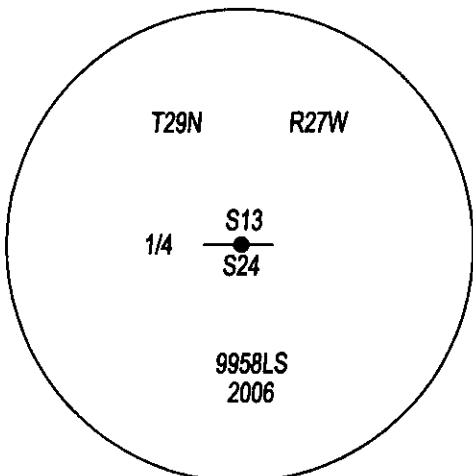
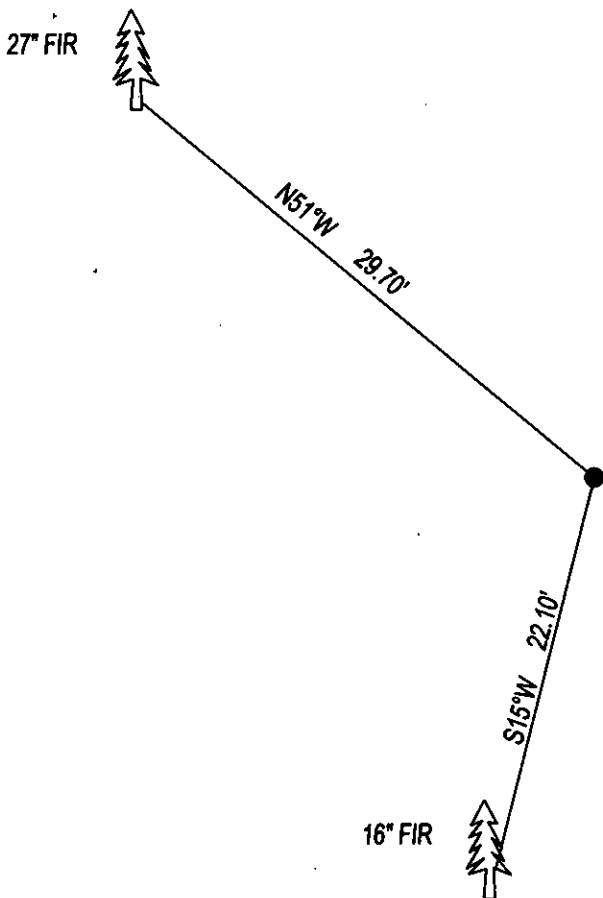


CERTIFIED CORNER RECORDATION

CORNER N1/4 SEC. 24 T. 29N R. 27W P.M.M., LINCOLN COUNTY

FOUND: 3 1/4" ALUM CAP STAMPED AS SHOWN, FROM WHICH;
16" FIR BEARS S15°W 22.10' WITH SCRIBE.
27" FIR BEARS N51°W 29.70' SCRIBE OVERGROWN.

MAINTENANCE: REMOVED TREE LIMBS FROM CORNER AND PAINTED BT'S.



SKETCH OF CORNER

CERTIFICATION

I, DAN CROFT
CERTIFY THE INFORMATION SHOWN HEREIN IS TRUE AND CORRECT.

SIGNATURE GROUND PARTY CHIEF

I, MARC J. CARSTENS
CERTIFY THAT THIS CORNER RECORD CORRECTLY REPRESENTS WORK
PERFORMED BY ME OR UNDER MY DIRECTION IN COMPLIANCE WITH THE
"CORNER RECORDATION ACT" (70-22-101, ET SEQ., M.C.A.)

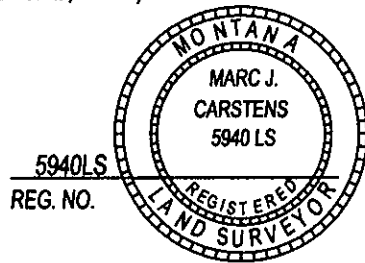
[Signature]
SIGNATURE OF SURVEYOR & SEAL

02-08-13

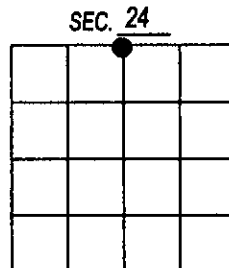
DATE

CARSTENS SURVEYING

EMPLOYER



OFFICE OF CLERK AND RECORDER, COUNTY OF LINCOLN
THIS "CORNER RECORD" WAS FILED FOR RECOF 243433 BOOK: CCR CC&R'S PAGE: 12007 Pages: 1
WAS NOTED ON TH STATE OF MONTANA LINCOLN COUNTY
AND IS ASSIGNED PAGE NO. , IN BOO RECORDED: 02/12/2013 9:35 KOI: CC&R'S
TAMMY D. LAUER CLERK AND RECORDER
FEE: \$0.00 BY: [Signature]
FOR: MARC J. CARSTENS
COUNTY OFFICIAL
CROSS INDEX NO. N-23 T. 29N R. 27W P.M.M.
ADOPTED JULY 1, 1981, MONTANA BOARD OF PROFESSIONAL ENGINEERS & LAND SURVEYORS



● CORNER THIS SHEET

