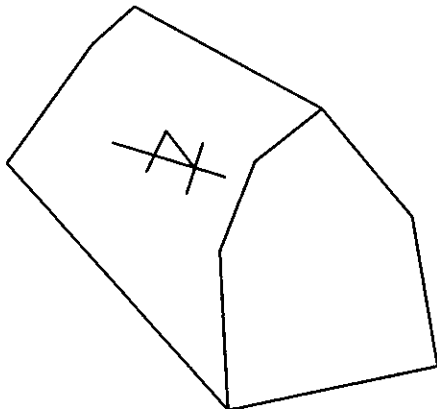
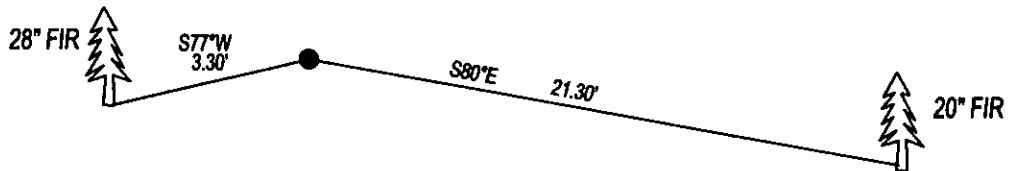


CERTIFIED CORNER RECORDATION

CORNER E1/4 SEC. 24 T. 29N, R. 27W, P.M.M., LINCOLN COUNTY

FOUND: ORIGINAL STONE, WITH 1/4 ON WEST, FROM WHICH;
 20° FIR BEARS S80°E 21.30' WITH SCRIBE.
 28° FIR BEARS S77°W 3.30' WITH SCRIBE.

MAINTENANCE: REMOVED SMALL TREES AND PAINTED STONE RED.



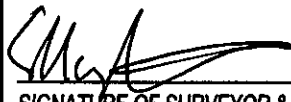
SKETCH OF CORNER

CERTIFICATION

I, DAN CROFT
 CERTIFY THE INFORMATION SHOWN HEREIN IS TRUE AND CORRECT.

SIGNATURE GROUND PARTY CHIEF

I, MARC J. CARSTENS
 CERTIFY THAT THIS CORNER RECORD CORRECTLY REPRESENTS WORK
 PERFORMED BY ME OR UNDER MY DIRECTION IN COMPLIANCE WITH THE
 "CORNER RECORDATION ACT" (70-22-101, ET SEQ., M.C.A.)



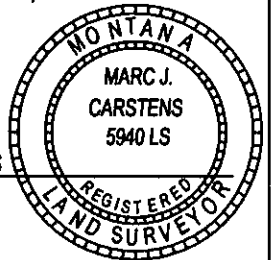
SIGNATURE OF SURVEYOR & SEAL

02-08-13

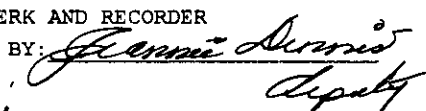
DATE

CARSTENS SURVEYING

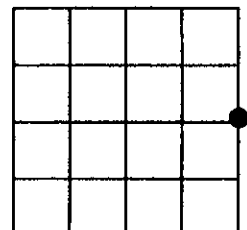
EMPLOYER



5940LS
 REG. NO.

OFFICE OF CLERK AND RECORDER, COUNTY OF LINCOLN
 THIS "CORNER RECORD" WAS FILED F 243430 BOOK: CCR CC&R'S PAGE: 12004 Pages: 1
 WAS NOT STATE OF MONTANA LINCOLN COUNTY
 AND IS ASSIGNED PAGE NO. RECORDED: 02/12/2013 9:20 KOI: CC&R'S
 TAMMY D. LAUER CLERK AND RECORDER
 COUNTY OFFICIAL FEE: \$0.00 BY: 
 FOR: MARC J. CARSTENS
 CROSS INDEX NO. P-25 T. 29N, R. 27W, P.M.M.
 ADOPTED JULY 1, 1981, MONTANA BOARD OF PROFESSIONAL ENGINEERS & LAND SURVEYORS

SEC. 24



● CORNER THIS SHEET

