

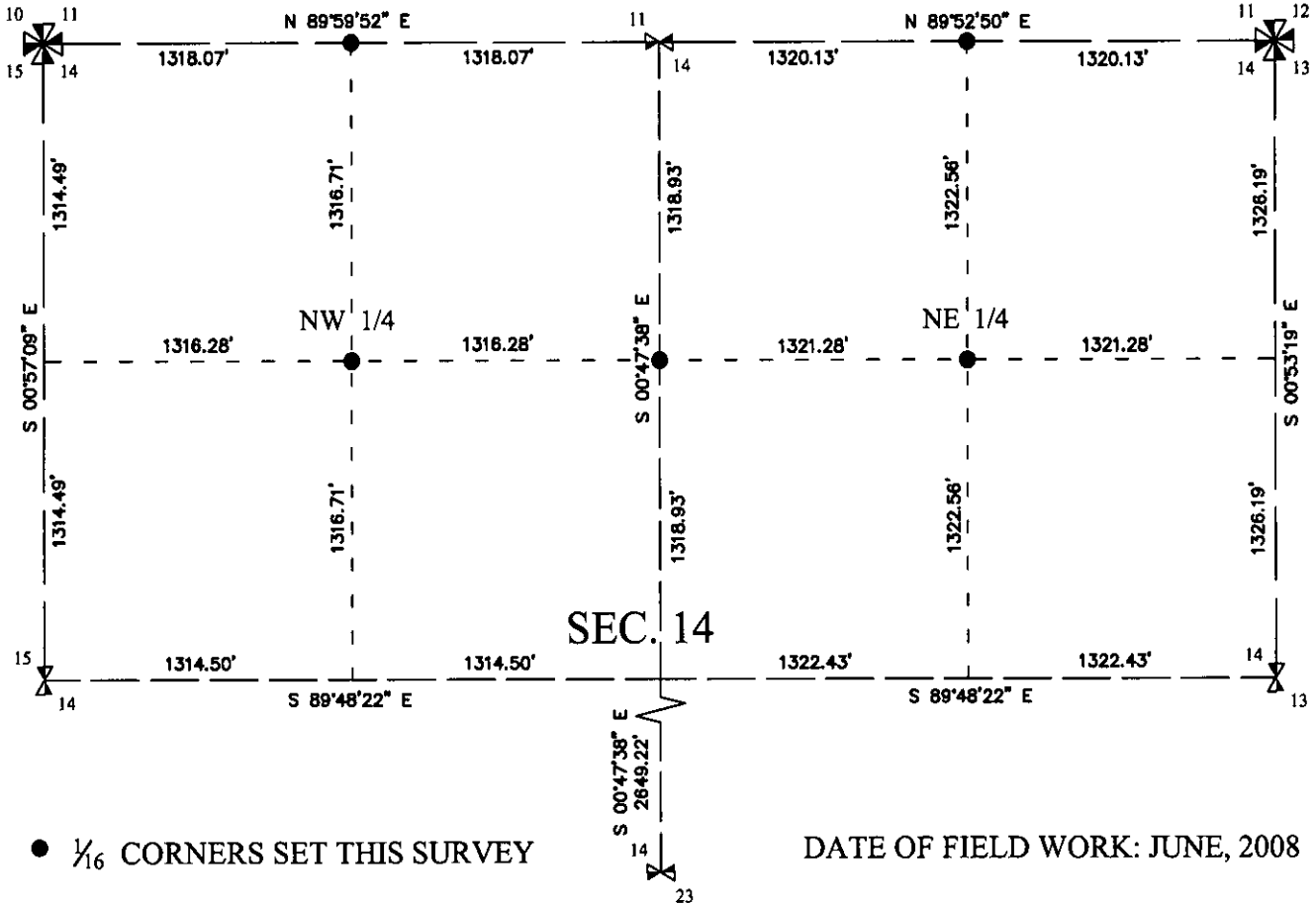
**INSTRUCTIONS**

1. Original and/or subsequent record used to evaluate the corner position.
2. Description of evidence found, note the discrepancies in the record, state method of establishing lost or obliterated corners.
3. Description of monument and accessories set to perpetuate the corner position.
4. Sketch of corner, show all pertinent data which can best be shown in a sketch example, corner marking, topography ties, position of accessories etc.
5. Certification must be signed and sealed by Land Surveyor registered in the State of Montana.
6. Fill in Cross Index & Section Diagram at bottom of sheet.

**CERTIFIED CORNER RECORDATION**

Corner West 1/16 Corner, Sections 11 & 14 T. 29 N R. 28 W P.M.M. Lincoln County

**SECTION 14 BREAKDOWN:** See corner recordation forms filed concurrently for Section 14 controlling corners.

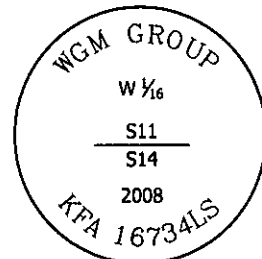


● 1/16 CORNERS SET THIS SURVEY

DATE OF FIELD WORK: JUNE, 2008

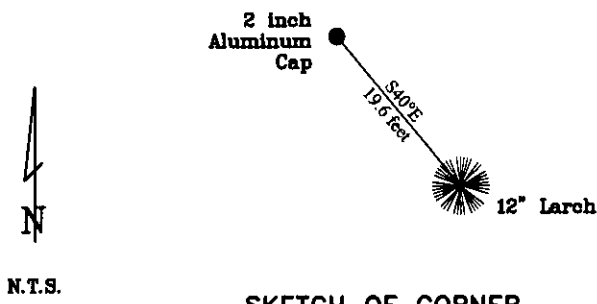
**SET:** A 5/8 in. rebar with 2 in. aluminum cap stamped:

Geodetic Coordinates:  
 NAD83(CORS): LAT. 48°16'59.898"N  
 LONG. 115°08'41.693"W  
 (for corner reconnaissance)



from which:

A 12 inch Larch, bears S 40° E, 19.6 feet, blazed and scribed: BT, tag affixed



N.T.S.

**SKETCH OF CORNER**

**CERTIFICATION**

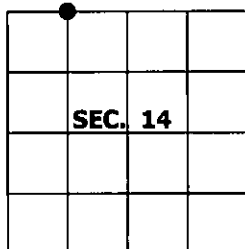
I, Joshua Phillips  
 certify the information shown herein is true and correct.  
 Signature Ground Party: [Signature]

I, Kirk F. Adkins  
 certify that this Corner Record correctly represents work performed by me or under my direction in compliance with the "Corner Recordation Act" (70-32-101, et seq., M.C.A.)  
 Signature of Surveyor & Seal: [Signature]

Date: 07/18/08 Reg. No. 16734LS  
 Employer: WGM Group, INC.

Office of Clerk and Recorder, County of \_\_\_\_\_ . This "corner record" was 212982 BOOK: CCR CC&R'S PAGE: 11231 Pages: 1

STATE OF MONTANA LINCOLN COUNTY  
 was noted RECORDED: 07/22/2008 10:15 KOI: CC&R'S \_\_\_\_\_, in  
 TAMMY D. LAUER CLERK AND RECORDER  
 book No. - FEE: \$0.00 BY: [Signature]



Cross Index No. J-18 T. 29 N R. 28 W P.M.M.

Adopted July 1, 1981, Montana Board of Professional Engineers & Land Surveyors

● corner this sheet