

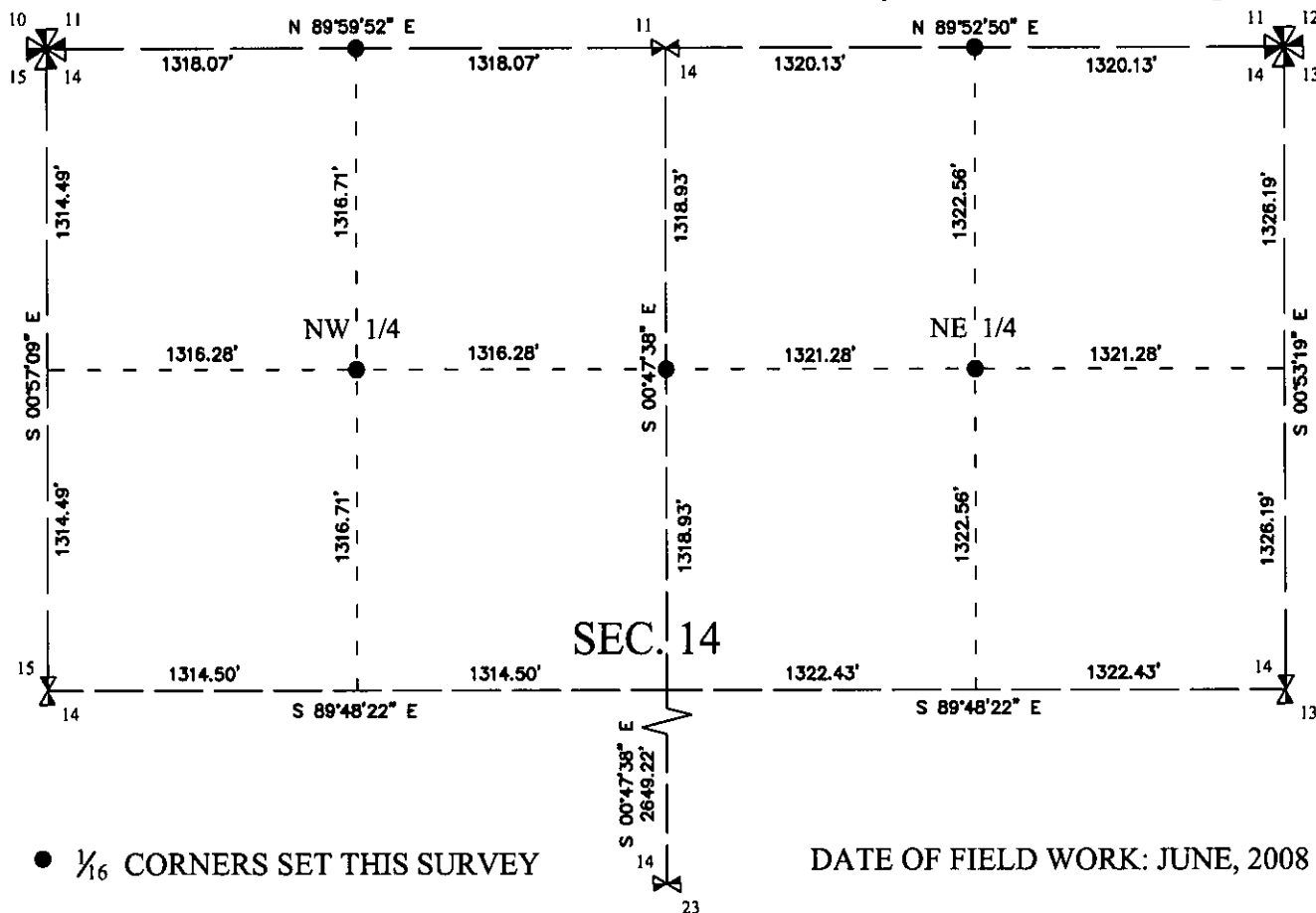
INSTRUCTIONS

1. Original and/or subsequent record used to evaluate the corner position.
2. Description of evidence found, note the discrepancies in the record, state method of establishing lost or obliterated corners.
3. Description of monument and accessories set to perpetuate the corner position.
4. Sketch of corner, show all pertinent data which can best be shown in a sketch example, corner marking, topography ties, position of accessories etc.
5. Certification must be signed and sealed by Land Surveyor registered in the State of Montana.
6. Fill in Cross Index & Section Diagram at bottom of sheet.

CERTIFIED CORNER RECORDATION

Corner Northeast $\frac{1}{16}$ Corner, Section 14 T. 29 N R. 28 W P.M.M. Lincoln County

SECTION 14 BREAKDOWN: See corner recordation forms filed concurrently for Section 14 controlling corners.



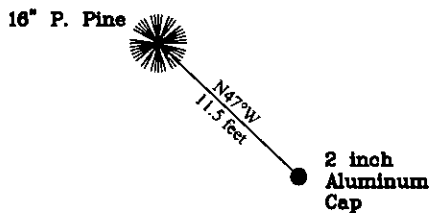
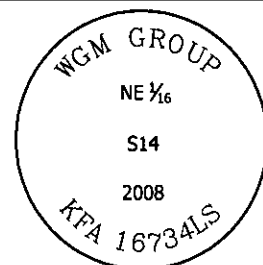
SET: A $\frac{5}{8}$ in. rebar with 2 in. aluminum cap stamped:

Geodetic Coordinates:

NAD83(CORS): LAT. 48°16'46.880"N
LONG. 115°08'02.408"W
(for corner reconnaissance)

from which:

A 16 inch Ponderosa Pine, bears N 47° W, 11.5 feet, blazed and scribed: BT, tag affixed



N.T.S.

SKETCH OF CORNER

CERTIFICATION

I, Joshua Phillips
certify the information shown herein is true and correct.

Signature of Ground Party: Kirk F. Adkins

I, Kirk F. Adkins
certify that this Corner Record correctly represents work performed by me or under my direction in accordance with the "Corner Recordation Act" (70-28-101, et seq., M.C.A.)

Signature of Surveyor: [Signature] Seal: 16734 LS

Date: 07/18/08 Exp. No. 16734LS

Employer: WGM Group, Inc.

REGISTERED PROFESSIONAL LAND SURVEYOR

Office of Clerk and Recorder, County of _____ . This "corner

record" 212980 BOOK: CCR CC&R'S PAGE: 11229 Pages: 1

STATE OF MONTANA LINCOLN COUNTY

WAS NO! RECORDED: 07/22/2008 10:05 KOI: CC&R'S

book N: TAMMY D. LAUER CLERK AND RECORDER

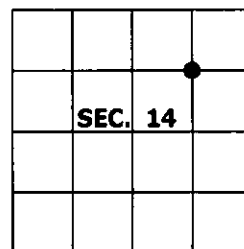
FEE: \$0.00

BY [Signature]

TO: WGM GROUP P.O. BOX 16027, MISSOULA, MONTANA 59808

Cross Index No. K-20 T. 29 N R. 28 W PMM

Adopted July 1, 1981, Montana Board of Professional Engineers & Land Surveyors



● corner this sheet