

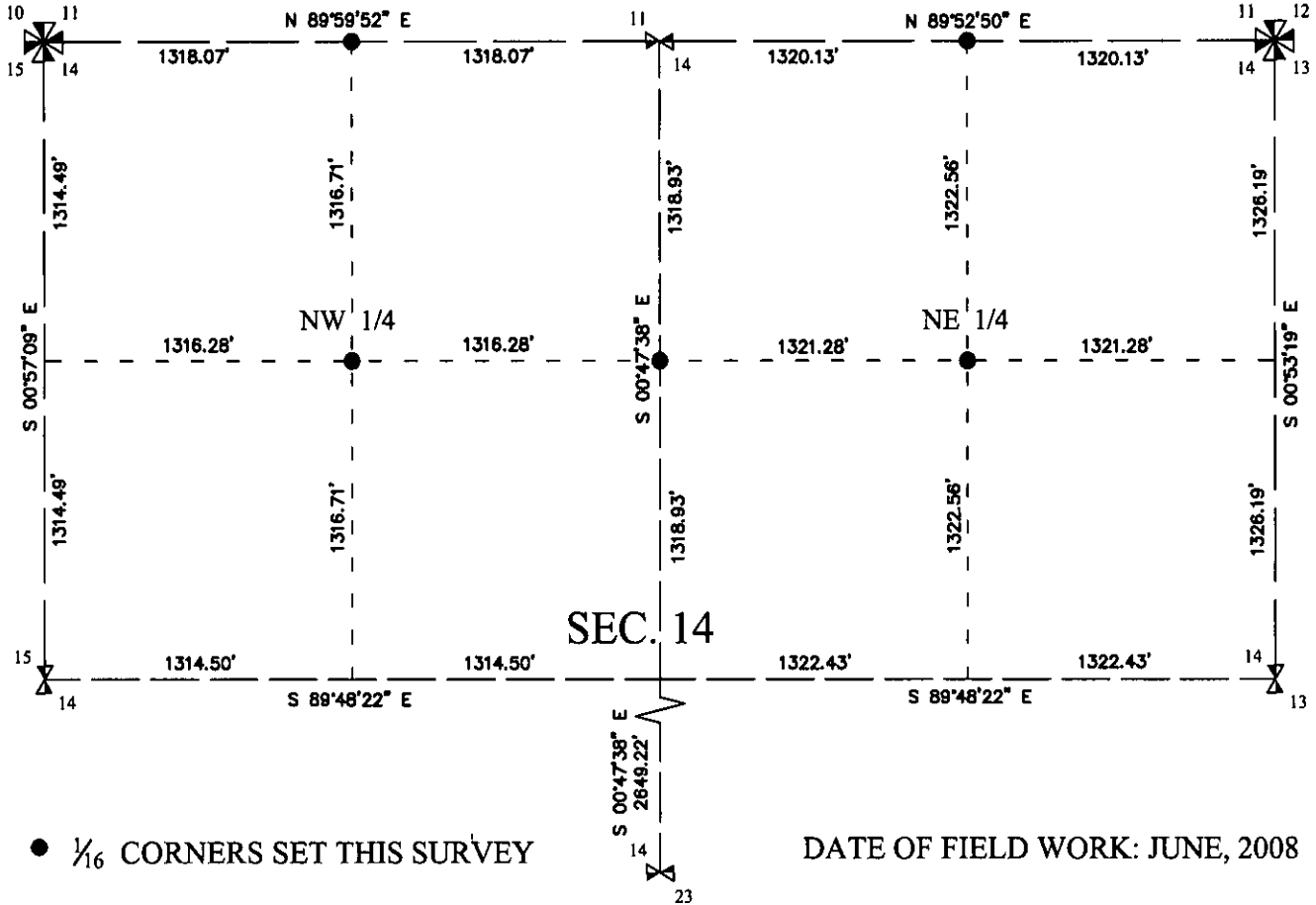
INSTRUCTIONS

1. Original and/or subsequent record used to evaluate the corner position.
2. Description of evidence found, note the discrepancies in the record, state method of establishing lost or obliterated corners.
3. Description of monument and accessories set to perpetuate the corner position.
4. Sketch of corner, show all pertinent data which can best be shown in a sketch example, corner marking, topography ties, position of accessories etc.
5. Certification must be signed and sealed by Land Surveyor registered in the State of Montana.
6. Fill in Cross Index & Section Diagram at bottom of sheet.

CERTIFIED CORNER RECORDATION

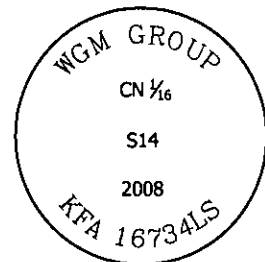
Corner Center North 1/16 Corner, Section 14 T. 29 N R. 28 W P.M.M. Lincoln County

SECTION 14 BREAKDOWN: See corner recordation forms filed concurrently for Section 14 controlling corners.



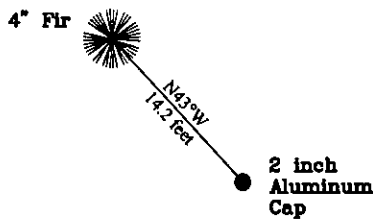
SET: A 5/8 in. rebar with 2 in. aluminum cap stamped:

Geodetic Coordinates:
NAD83(CORS): LAT. 48°16'46.888"N
LONG. 115°08'21.936"W
(for corner reconnaissance)



from which:

A 4 inch Fir, bears N 43° W, 14.2 feet, blazed and scribed: BT, tag affixed



N.T.S.

SKETCH OF CORNER

CERTIFICATION

I, Joshua Phillips
certify the information shown herein is true and correct.

Signature of Ground Party (Client)

I, Kirk F. Adkins
certify that this Corner Record correctly represents work performed by me or under my direction in compliance with the "Corner Recordation Act" (70-22-101, M.C.A.)

Signature of Surveyor & Seal

Date: 07/18/08 Reg. No. 26734LS
Employer: WGM Group, Inc.

REGISTERED PROFESSIONAL LAND SURVEYOR

Office of Clerk and Recorder, County of _____ . This "corner

record" w 212979 BOOK: CCR CC&R'S PAGE: 11228 Pages: 1

STATE OF MONTANA LINCOLN COUNTY

was noted RECORDED: 07/22/2008 10:00 KOI: CC&R'S

TAMMY D. LAUER CLERK AND RECORDER

book No.

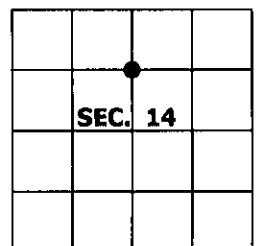
FEE: \$0.00

BY: Joshua Phillips

TO: WGM GROUP P.O. BOX 16027, MISSOULA, MONTANA 59808

Cross Index No. K-19 T. 29 N R. 28 W P.M.M.

Adopted July 1, 1981, Montana Board of Professional Engineers & Land Surveyors



● corner this sheet