

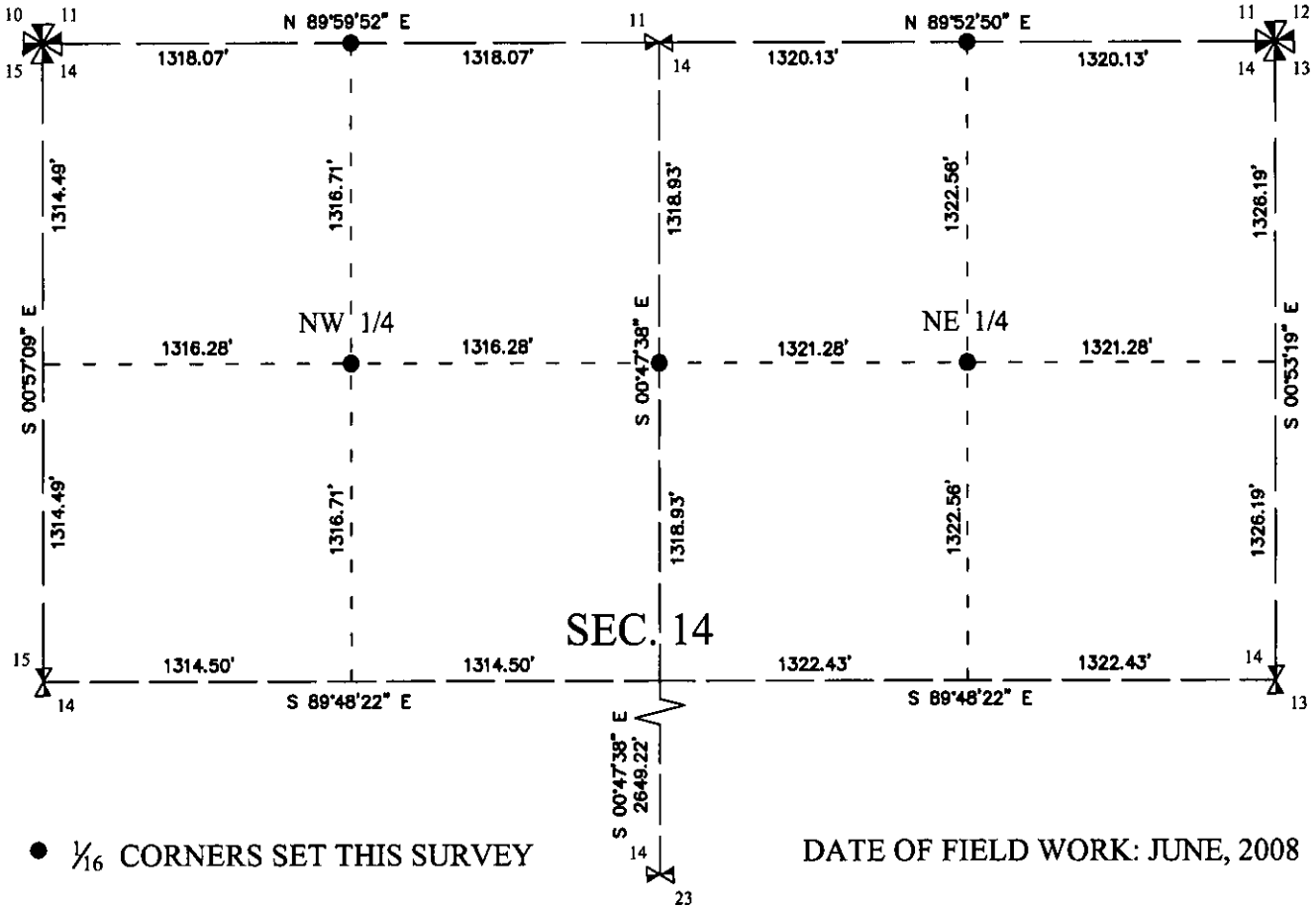
# INSTRUCTIONS

1. Original and/or subsequent record used to evaluate the corner position.
2. Description of evidence found, note the discrepancies in the record, state method of establishing lost or obliterated corners.
3. Description of monument and accessories set to perpetuate the corner position.
4. Sketch of corner, show all pertinent data which can best be shown in a sketch example, corner marking, topography ties, position of accessories etc.
5. Certification must be signed and sealed by Land Surveyor registered in the State of Montana.
6. Fill in Cross Index & Section Diagram at bottom of sheet.

## CERTIFIED CORNER RECORDATION

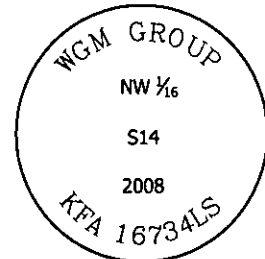
Corner Northwest 1/4 Corner, Section 14 T. 29 N R. 28 W P.M.M. Lincoln County

**SECTION 14 BREAKDOWN:** See corner recordation forms filed concurrently for Section 14 controlling corners.



SET: A 5/8 in. rebar with 2 in. aluminum cap stamped:

Geodetic Coordinates:  
NAD83(CORS): LAT. 48°16'46.909"N  
LONG. 115°08'41.392"W  
(for corner reconnaissance)

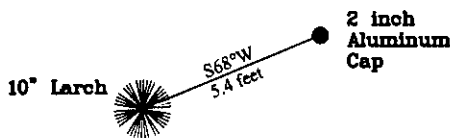


from which:

A 10 inch Larch, bears S 68° W, 5.4 feet, blazed and scribed: BT, tag affixed



N.T.S.



SKETCH OF CORNER

**CERTIFICATION**

I, Joshua Phillips  
certify the information shown herein to be true and correct.

[Signature]  
Signature of Ground Party

I, Kirk F. Adkins  
certify that this Corner Record correctly represents work performed by me or under my direction in compliance with the "Corner Recordation Act" (70-22-101, MCA, M.C.L.R.S.)

[Signature]  
Signature of Surveyor & Seal

Date: 07/18/08 Eng. No. 216734LS  
Employer: WGM Group, Inc.

**REGISTERED PROFESSIONAL LAND SURVEYOR**

Office of Clerk and Recorder, County of \_\_\_\_\_ . This "corner

record" was filed 212978 BOOK: CCR CC&R'S PAGE: 11227 Pages: 1

STATE OF MONTANA LINCOLN COUNTY

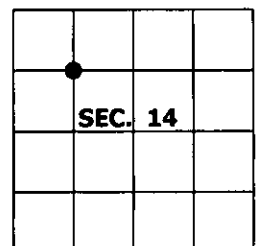
was noted on RECORDED: 07/22/2008 9:55 KOI: CC&R'S , in

book No. \_\_\_\_\_ TAMMY D. LAUER CLERK AND RECORDER

FEE: \$0.00 BY [Signature]  
TO: WGM GROUP P.O. BOX 16027, MISSOULA, MONTANA 59808,

Cross Index No. K-18 T. 29 N R. 28 W PMM

Adopted July 1, 1981, Montana Board of Professional Engineers & Land Surveyors



● corner this sheet