

INSTRUCTIONS

1. Original and/or subsequent record used to evaluate the corner position.
2. Description of evidence found, note the discrepancies in the record, state method of establishing lost or obliterated corners.
3. Description of monument and accessories set to perpetuate the corner position.
4. Sketch of corner, show all pertinent data which can best be shown in a sketch example, corner marking, topography ties, position of accessories etc.
5. Certification must be signed and sealed by Land Surveyor registered in the State of Montana.
6. Fill in Cross Index & Section Diagram at bottom of sheet.

CERTIFIED CORNER RECORDATION

Corner ¼ Corner, Sections 14 & 23 T. 29 N R. 28 W P.M.M. Lincoln County

RECORD:

Fessenden &
Lyman
1903:

"...32.50 A pine, 20 ins. dia., on line, I mark with 2 notches on E.
and W. sides...

...40.00 A slate stone, in place, 24 x 30 x 10 ins. above ground, for ¼
sec. cor., I mark with a cross (x) at exact cor. point and ¼ on N. side
of cross;

from which:

A pine, 20 ins. dia., bears N. 25°30' W., 55 lks. dist., marked
¼ S 14 B T

A pine, 12 ins. dia., bears S. 55°30' E., 60 lks. dist., marked
¼ S 23 B T..."

FOUND:

An original line tree, a solitary 30 inch stump lying 2153.4 feet east of the southwest
corner of section 14.

SET:

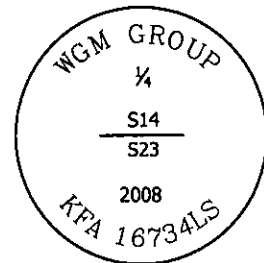
A ⅝ in. rebar with ¾ in. aluminum cap stamped:

Geodetic Coordinates:

NAD83(CORS): LAT. 48°16'07.740"N

LONG. 115°08'21.121"W

(for corner reconnaissance)

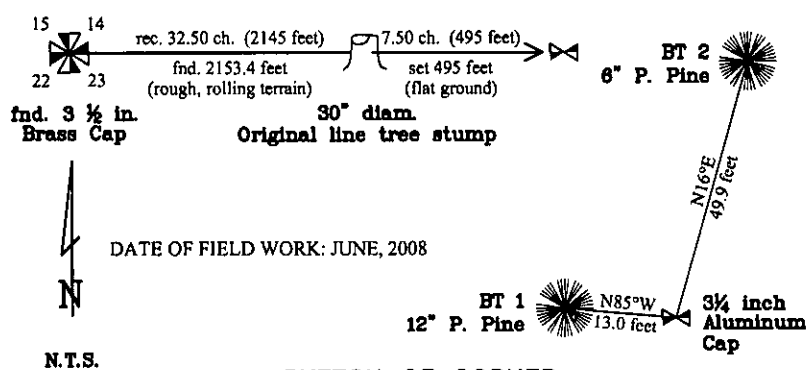


at a position calculated by prolongating easterly the line from the
southwest section corner of section 14 and the found line tree stump at a record distance
of 7.50 chains (495 feet) easterly from the line tree. The corner fell in a localized area of
broken, outcropping rock where the burial of a stone by the original surveyor would be
impossible.

from which:

A 12 inch Ponderosa Pine, bears N 85° W, 13.0 feet, blazed and scribed: BT 1, tag affixed

A 6 inch Ponderosa Pine, bears N 16° E, 49.9 feet, blazed and scribed: BT 2, tag affixed



SKETCH OF CORNER

CERTIFICATION

1. Joshua Phillips
certify the information shown herein is true and correct.

Signature of Ground Party: *[Signature]*

2. Kirk F. Adkins
certify that this Corner Record correctly represents work
performed by me or under my direction in accordance with
the "Corner Recordation Act" (70-82-101, M.C.L.)

Signature of Surveyor & Seal: *[Signature]*

Date: 07/18/08 Reg. No. 16734LS

Employer: WGM Group, Inc.

Professional Land Surveyor

Office of Clerk and Recorder, County of _____ . This "corner

record" was filed for reco 212974 BOOK: CCR CC&R'S PAGE: 11223 Pages: 1

STATE OF MONTANA LINCOLN COUNTY

was noted on the cross-index RECORDED: 07/22/2008 9:35 KOI: CC&R'S

book No. _____ TAMMY D. LAUER CLERK AND RECORDER

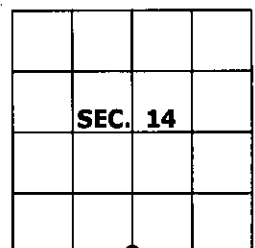
FEE: \$0.00

BY: *[Signature]*

TO: WGM GROUP P.O. BOX 16027, MISSOULA, MONTANA 59808,

Cross Index No. N-19 T. 29 N R. 28 W PMM

Adopted July 1, 1981, Montana Board of Professional Engineers & Land Surveyors



● corner this sheet