

**INSTRUCTIONS**

1. Original and/or subsequent record used to evaluate the corner position.
2. Description of evidence found, note the discrepancies in the record, state method of establishing lost or obliterated corners.
3. Description of monument and accessories set to perpetuate the corner position.
4. Sketch of corner, show all pertinent data which can best be shown in a sketch example, corner marking, topography ties, position of accessories etc.
5. Certification must be signed and sealed by Land Surveyor registered in the State of Montana.
6. Fill in Cross Index & Section Diagram at bottom of sheet.

**CERTIFIED CORNER RECORDATION**

Corner ¼ Corner, Sections 13 & 14 T. 29 N R. 28 W P.M.M. Lincoln County

**RECORD:**

**Fessenden & Lyman 1903:** "...40.00 Set a slate stone, 14 x 10 x 6 ins., 9 ins. in the ground, for ¼ sec. cor., marked ¼ on W. face;

from which:

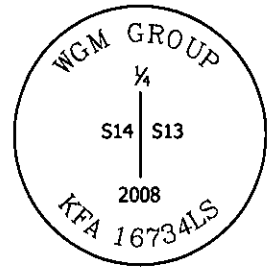
A pine, 24 ins. dia., bears N. 30°15' E., 21 lks. dist., marked ¼ S 13 B T

A fir, 10 ins. dia., bears S. 40°45' W., 16 lks. dist., marked ¼ S 14 B T..."

**FOUND:** An original bearing tree, a stump, 20 ins. diam., bears S 40° W, 10.5 feet, (scribing visible)

**SET:** A ⅝ in. rebar with ¾ in. aluminum cap stamped:

Geodetic Coordinates:  
 NAD83(CORS): LAT. 48°16'33.787"N  
 LONG. 115°07'42.573"W  
 (for corner reconnaissance)

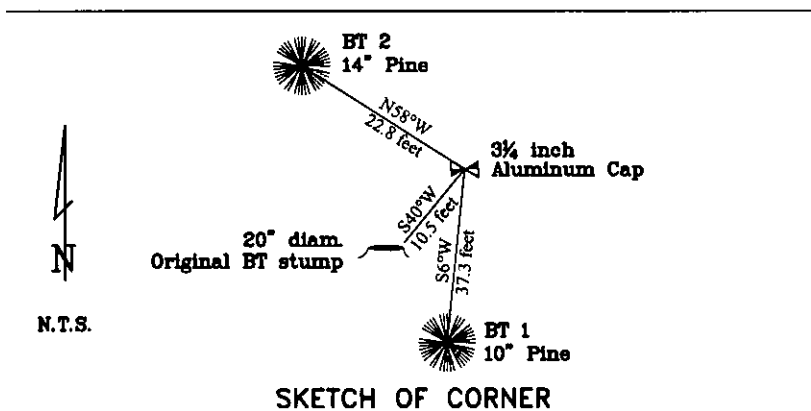


from which:

A 10 inch Ponderosa Pine, bears S 6° W, 37.3 feet, blazed and scribed: BT 1, tag affixed

A 14 inch Ponderosa Pine, bears N 58° W, 22.8 feet, blazed and scribed: BT 2, tag affixed

DATE OF FIELD WORK: JUNE, 2008



**CERTIFICATION**

I, Joshua Phillips  
 certify the information shown herein to be true and correct.

*[Signature]*  
 Signature Ground Party

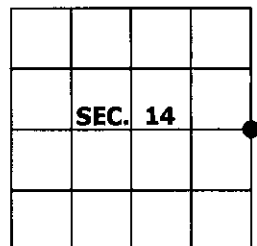
I, Kirk F. Adkins  
 certify that this Corner Record correctly represents work performed by me or under my direction in compliance with the "Corner Recordation Act" (70-22-101, et seq., M.C.A.)

*[Signature]*  
 Signature of Surveyor & Seal 16734LS

Date: 07/18/08 Reg. No. 16734LS  
 Employer: WGM Group, Inc.

**MONTANA**  
 KIRK F. ADKINS  
 LICENSED PROFESSIONAL LAND SURVEYOR \*

Office of Clerk and Recorder, County of \_\_\_\_\_ . This "corner record" was filed for re 212973 BOOK: CCR CC&R'S PAGE: 11222 Pages: 1  
 was noted on the cross RECORDED: 07/22/2008 9:30 KOI: CC&R'S  
 book No. \_\_\_\_\_ TAMMY D. LAUER CLERK AND RECORDER  
 FEE: \$0.00 BY *[Signature]*  
 TO: WGM GROUP P.O. BOX 16027, MISSOULA, MONTANA 59808,  
 Cross Index No. L-21 T. 29 N R. 28 W PMM



Adopted July 1, 1981, Montana Board of Professional Engineers & Land Surveyors

● corner this sheet