

INSTRUCTIONS

1. Original and/or subsequent record used to evaluate the corner position.
2. Description of evidence found, note discrepancies in the record, state method of establishing lost or obliterated corners.
3. Description of monument and accessories set to perpetuate the corner position.
4. Sketch of corner, show all pertinent data which can best be shown in a sketch example, corner marking, topography ties, position of accessories, etc.
5. Certification must be signed and sealed by Land Surveyor registered in the State of Montana.
6. Fill in Cross Index & Section Diagram at bottom of sheet.

CERTIFIED CORNER RECORDATION

Corner S1/4 SEC. 14 T. 29N R. 27W P.M.M. Lincoln County

ORIGINAL:

GLO - Paul S.A. Bickel - 1901

Set a slate stone 20x10x3 inches, 15 inches in the ground, for 1/4 Section Corner, marked 1/4 on north face; from which:

A Pine, 26 inches diameter, bears S13°45'E, 105 links (69.3 feet) distant, marked "1/4 S23 BT"

A Pine, 20 inches diameter, bears N2°15'W, 63 links (41.58 feet) distant, marked "1/4 S14 BT"

BLM - 1971

Found 1/4 Section Corner of Sections 14 and 23, monumented with a slate stone 20x10x3 inches, set 15" in the ground, marked 1/4 on the north face; from which the original bearing trees:

A matured pine, 32 inches diameter, bears S13°45'E, 105 links (69.3 feet) distant, marked "1/4 S23 BT"

A matured pine, 26 inches diameter, bears N2°15'W, 63 links (41.58 feet) distant, marked with an overgrown blaze.

At the corner point Set an iron post, 30 inches long, 2 1/2 inches diameter in the ground, with brass cap marked as shown below; from which:

A Pine, 10 inches diameter, bears N53°E, 131 links (86.46 feet) distant, marked "1/4 S14 BT"

A Pine, 6 inches diameter, bears S15 1/4°E, 83 links (54.78 feet) distant, marked "1/4 S23 BT"

Bury the original stone along side the iron post.

FOUND:

Found a 3 1/4" brass cap on 2 1/2" iron post marked as shown below. Monument is 0.45' above ground; from which:

A pine stump, 29 inches diameter, 5 feet tall with blaze scribed "1/4 S23" bears S13°09'03"E, 68.13 feet distant.

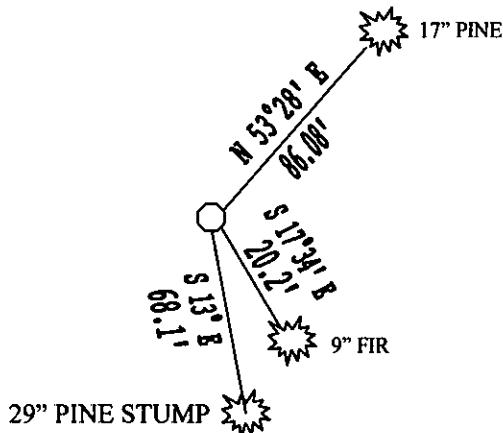
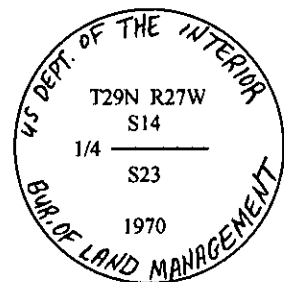
A 17" Ponderosa Pine with healed blaze bears N53°28'22"E, 86.08 feet distant.

ESTABLISH:

Establish one new accessory for this corner.

A 9" Fir bears S17°34'04"E, 20.2 feet distant, blaze and scribe "1/4 S14 BT"

Bearing trees were painted red and bearing tree tag attached.



SKETCH OF CORNER

CERTIFICATION

I, Stephen Jeske

Certify the information shown herein is true and correct.

Stephen Jeske
Signature Ground Party Chief

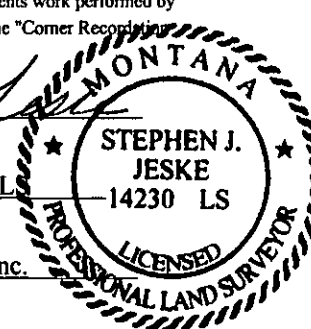
I, Stephen Jeske

certify that this Corner Record correctly represents work performed by me or under my direction in compliance with the "Corner Record Act" (70-22-101, et seq., M.C.A.)

Stephen Jeske
Signature of Surveyor & Seal

Date: 05-27-08 Reg. No. 14230L

Employer: J.R.S. Surveying, Inc.



Office of Clerk and Recorder, County of _____ This "corner

record" was filed for record on 211728 BOOK: CCR CC&R'S PAGE: 11208 Pages: 1

was noted on the cross-index plat a STATE OF MONTANA LINCOLN COUNTY

book no. RECORDED: 05/29/2008 10:31 KOI: CC&R'S

TAMMY D. LAUER CLERK AND RECORDER

FEE: \$0.00

BY Neil Blomdahl

TO: J.R.S. SURVEYING P.O. BOX 1050, LIBBY, MONTANA 59923

Cross Index No. N19 T. 29N R. 27W PMM

