

INSTRUCTIONS

1. Original and/or subsequent record used to evaluate the corner position.
2. Description of evidence found, note discrepancies in the record, state method of establishing lost or obliterated corners.
3. Description of monument and accessories set to perpetuate the corner position.
4. Sketch of corner, show all pertinent data which can best be shown in a sketch example, corner marking, topography ties, position of accessories, etc.
5. Certification must be signed and sealed by Land Surveyor registered in the State of Montana.
6. Fill in Cross Index & Section Diagram at bottom of sheet.

CERTIFIED CORNER RECORDATION

Corner CS1/16 SEC. 14 T. 29N R. 27W P.M.M. Lincoln County

The new corner monument was established as a result of a subdivisional survey of the Section. Said subdivisional survey was made in accordance with methods and procedures contained in the Manual of Surveying Instructions (1973); U.S. Bureau of Land Management.

FOUND:

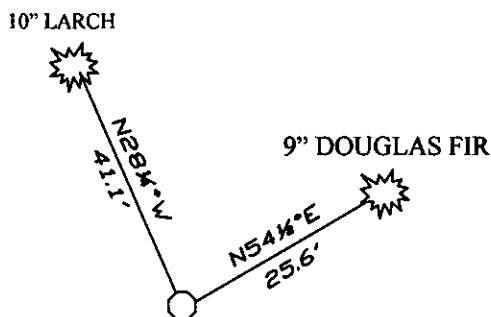
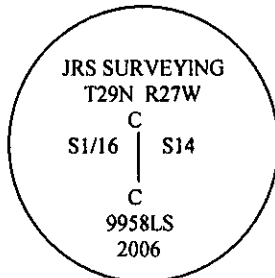
No evidence of corner found.

ESTABLISH:

Set a 5/8" x 30" rebar with 3/4" aluminum cap, marked as shown below; from which:

A 9" Douglas Fir bears N54°32'46"E, 25.61 feet distant, blaze and scribe "CS1/16 S14 BT"

A 10" Larch bears N28°12'06"W, 41.06 feet distant, blaze and scribe "CS1/16 S14 BT"



SKETCH OF CORNER

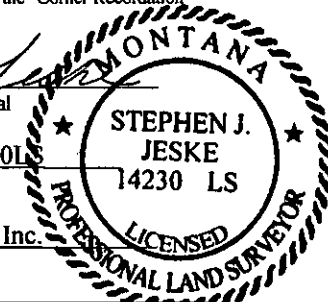
CERTIFICATION

I, Stephen Jeske

Certify the information shown herein is true and correct.

Signature Ground Party ChiefI, Stephen Jeske

certify that this Corner Record correctly represents work performed by me or under my direction in compliance with the "Corner Recordation Act" (70-22-107, et seq., M.C.A.)

Signature of Surveyor & SealDate: 05-27-08 Reg. No. 14230LSEmployer: J.R.S. Surveying, Inc.

Office of Clerk and Recorder, County of _____ This "corner

record" was filed for rec 211720 BOOK: CCR CC&R'S PAGE: 11200 Pages: 1

was noted on the cross-i STATE OF MONTANA LINCOLN COUNTY

book no. _____ RECORDED: 05/29/2008 10:23 KOI: CC&R'S

TAMMY D. LAUER CLERK AND RECORDER

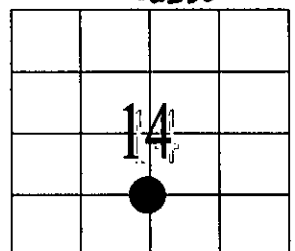
FEE: \$0.00

BY

TO: J.R.S. SURVEYING P.O. BOX 1050, LIBBY, MONTANA 59923

Cross Index No. M19 T. 29N R. 27W PMM

Adopted July 1, 1981, Montana Board of Professional Engineers & Land Surveyors



• - Corner this sheet