

CERTIFIED CORNER RECORDATION

Corner SE COR. S 9 T. 29 N. R. 27 W. P.M.M. LINCOLN County

I. Record: 1902 original GLO survey by Paul S. Bickel, set a trachite stone 22x7x5 ins., 17 ins. in the ground, marked with 4 notches on the S. edge and 3 notches on the E. edges from which:

- A tamarack, 20 ins. diam., bears N. 73°45' E., 126 lks. dist. (83.16 ft), mkd. T29N R27W S10 BT.
- A pine, 5 ins. diam., bears S. 39°30' E., 72 lks. dist. (47.52 ft), mkd. T29N R27W S15 BT.
- A fir, 30 ins. diam. bears S. 32°15' W., 31 lks. dist. (20.46 ft), mkd. T29N R27W S16 BT.
- A tamarack, 20 ins. diam., bears N. 38°30' W., 80 lks. dist. (52.80 ft), mkd. T29N R27W S9 BT.

1965 BLM remonumentation by D. Lindenberg: Set a iron post, 30 ins. long, 2 1/2 ins. diam., 26 ins. in the ground, with brass cap from which:

- A larch, 26 ins. diam., bears N. 73°45' E., 126 lks. dist., with overgrown blaze.
- A pine, 13 ins. diam., bears S. 39°30' E., 72 lks. dist., mkd. T29N R27W S15 BT.
- A snag, 30 ins. diam., bears S. 32°15' W., 31 lks. dist., mkd. T29N R27W S16 BT.
- A stump, 22 ins. diam., bears N. 38°30' W., 80 lks. dist., with fallen log mkd. T29N R27W S9BT.
- A fir, 5 ins. diam., bears S. 12° W., 23 lks. dist. (15.18 ft.) mkd. T29N R27W S16 BT.
- A fir, 14 ins. diam., bears N. 5° W., 25 lks. dist. (16.50 ft.) mkd. T29N R27W S9 BT.

II. Found: A 3 1/4 ins. diam. BLM brass cap on a 2 1/2 ins. diam. iron pipe firmly set and mkd. as shown below from which:

- A larch, 30 ins. diam., bears N. 73° E., 83.16 ft. dist. with overgrown face.
- A fir, 9 ins. diam., bears S. 12° W., 15.20 ft. dist. with healed face.
- A fir snag, 16 ins. diam., bears N. 5° W., 16.50 ft. dist., with visible scribes.

III. Perpetuation: Establish two bearing trees described below:

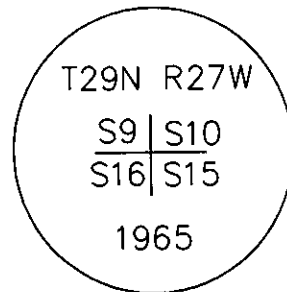
- A larch, 10 ins. diam., bears S. 62° E., 20.10 ft. dist., mkd. T29N R27W S15 BT.
- A fir, 9 ins. diam., bears N. 63° W., 32.00 ft. dist., mkd. T29N R27W S9 BT.

Set a steel post on line 3 ft. west of found monument

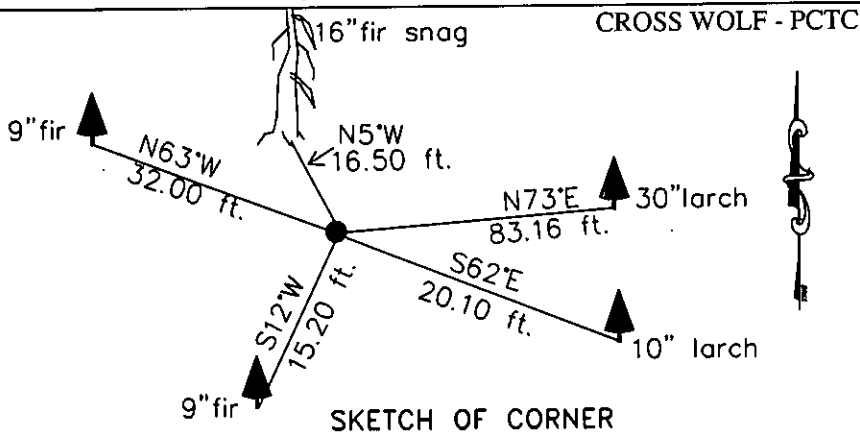
Painted faces and 6 in. wide red bands to all bearing trees and attached Bearing Tree and Land Survey Monument signs.

Magnetic declination: 18° East

Equipment used: Hand compass and loggers tape



Kootenai Surveyors Inc., 314 California Av., Libby, MT. 59923 (406) 293-4354



CERTIFICATION

I, Kelly Rooney
 certify the information shown herein is true and correct.
Kelly Rooney
 Signature Ground Party Chief

I, Alvah F. Hughes
 certify that this Corner Record correctly represents work performed by me or under my direction in compliance with the "Corner Recordation Act" (70-22-101, et seq., M.C.A.)
Alvah F. Hughes
 Signature of Surveyor & Seal

Date: 10/30/2006 Reg. No. 7322-15

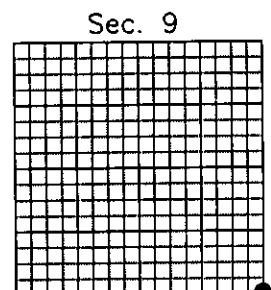
Employer: Kootenai Surveyors Inc.

Office of Clerk and Recorder, County of Lincoln This "corner

record" was filed for record on 200854 BOOK: CCR CC&R'S PAGE: 11055 Pages: 1
 was noted on the cross-index STATE OF MONTANA LINCOLN COUNTY
 book No. _____ RECORDED: 02/07/2007 9:13 KOI: CC&R'S
 TAMMY D. LAUER CLERK AND RECORDER
 FEE: \$0.00 BY: *Tammy D. Lauer*
 TO: FILED

Cross Index No. J 13 T. 29N R. 27W P.M., MT

Adopted July 1, 1981, Montana Board of Professional Engineers & Land Surveyors



• corner this sheet