

# CERTIFIED CORNER RECORDATION

Corner SE COR. S 4 T 29 N. R. 27 W. P.M.M. LINCOLN County

I. Record: 1902 original GLO survey by Paul S. Bickel, set a trachite stone 22x10x4 ins., 17. ins. in the ground, marked with 5 notches on the S. edge and 3 notches on the E. edges from which:

- A pine, 5 ins. diam., bears N. 32° E., 39 lks. dist. (25.74 ft), mkd. T29N R27W S3 BT.
- A tamarack, 7 ins. diam., bears S. 20° E., 32 lks. dist. (21.12 ft), mkd. T29N R27W S10 BT.
- A tamarack, 7 ins. diam. bears S. 35°30' W., 18 lks. dist. (11.88 ft), mkd. T29N R27W S9 BT.
- A tamarack, 6 ins. diam., bears N. 13°30' W., 10 lks. dist. (6.60 ft), mkd. T29N R27W S4 BT.

## II. Found:

- A larch, 20 ins. diam., bears S. 35°30' W., 11.88 ft. dist. with overgrown face.
- A larch, 22 ins. diam., bears N. 20° W., ( N.13°30'W. record), 6.60 ft. dist. with healed face.

III. Perpetuation: At the corner point, determined from the original bearing trees, set a 2 1/2 ins. diam. Aluminum pipe 30 ins. long, 26 ins. in the ground, with a 3 1/4 ins. diam. Aluminum cap mkd. as shown below, from which:

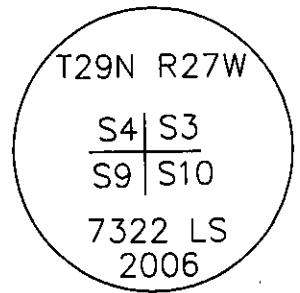
- A larch, 12 ins. diam., bears N.36°E., 38.70 ft. dist., mkd. T29N R27W S3 BT.
- A larch, 21 ins. diam., bears S.9°30'E., 47.35 ft. dist., mkd. T29N R27W S10 BT.

Raise a collar of stone around set monument

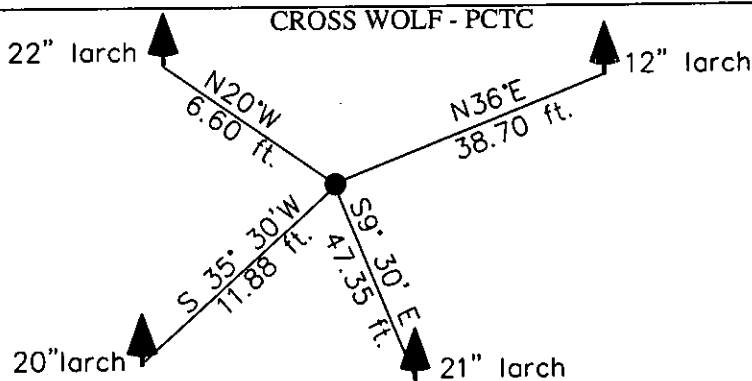
Painted faces and 6 in. wide red bands to all bearing trees and attached Bearing Tree and Land Survey Monument signs.

Magnetic declination: 18° East

Equipment used: Hand compass and loggers tape



Kootenai Surveyors Inc., 314 California Av., Libby, MT. 59923 (406) 293-4354



SKETCH OF CORNER

## CERTIFICATION

I, Kelly Rooney  
certify the information shown herein is true and correct.

Kelly Rooney  
Signature Ground Party Chief

I, Alvah F. Hughes  
certify that this Corner Record correctly represents work performed by me or under my direction in compliance with the "Corner Recordation Act" (70-22-101, et seq., M.C.A.)

Alvah F. Hughes  
Signature of Surveyor & Seal

Date: 9/30/2006 Reg. No. 7322-LS

Employer: Kootenai Surveyors Inc.

Office of Clerk and Recorder, County of Lincoln. This "corner

record" was filed for recor 200853 BOOK: CCR CC&R'S PAGE: 11054 Pages: 1

was noted on the cross-ir STATE OF MONTANA LINCOLN COUNTY

book No. RECORDED: 02/07/2007 9:12 KOI: CC&R'S

TAMMY D. LAUER CLERK AND RECORDER

FEE: \$0.00

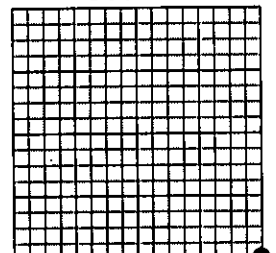
BY: Frankie Dwyer

TO: FILED ,

Cross Index No. E 13 T. 29N R. 27W P.M., MT

Adopted July 1, 1981, Montana Board of Professional Engineers & Land Surveyors

Sec. 4



• corner this sheet