

CERTIFIED CORNER RECORDATION

Corner E 1/4 S4 T 29 N. R. 27 W. P.M.M. Lincoln County

I. Record: 1902 original GLO survey by Paul S. Bickel: Set a post 4x4 ins. 36 ins. long 26 ins. in the ground, marked 1/4 S4 on the W. face; 3 on E. face from which:

A pine, 6 ins. diam., bears N. 88° E., 18 lks. dist., (11.88 ft.), mkd. 1/4 S3 BT.
A pine, 14 ins. diam., bears S. 50° W., 43 lks. dist., (28.38 ft.), mkd. 1/4 S4 BT.

1982 BLM Remonumentation by Almanza: Set a Aluminum post, 30 ins. long, 2 1/2 ins. diam., 22 ins. in the ground, with Aluminum cap from which:

A fir, 6 ins. diam., bears N. 84° W., 37 lks. dist., (24.42 ft.) mkd. X BT.
A pine, 16 ins. diam., bears S. 50° W., 43 lks. dist., (28.38 ft.) mkd. 1/4 S4 BT.

II. Found: A 3 1/4 ins. diam. BLM Aluminum cap on a 2 1/2 in. diam. Aluminum pipe firmly set, and marked as shown below from which:

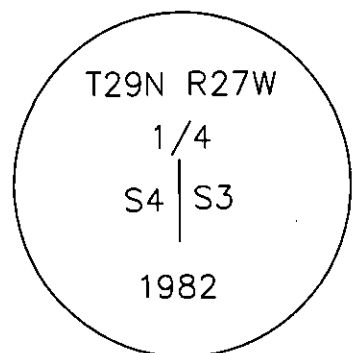
A fir, 13 ins. diam., bears N. 84° W., 24.42 ft. dist. with healed face.
A pine, 19 ins. diam., bears S. 50° W. 28.38 ft. dist. with healed face.

III. Perpetuation:

Painted faces and 6 in. wide red bands to all bearing trees and attached Land Survey Monument and Bearing Tree signs.

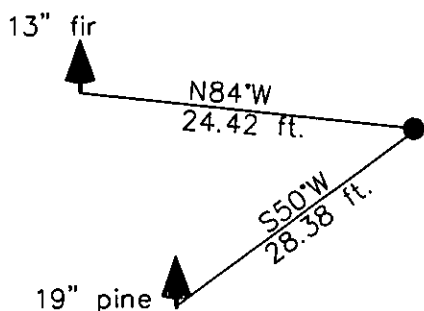
Magnetic declination: 18° East

Equipment used: Hand compass and loggers tape



Kootenai Surveyors Inc., 314 California Av., Libby, MT. 59923 (406) 293-4354

CROSS WOLF- PCTC



SKETCH OF CORNER

CERTIFICATION

I, kelly Rooney
certify the information shown herein is true and correct.
Kelly Rooney
Signature Ground Party Chief

I, Alvah F. Hughes
certify that this Corner Record correctly represents work performed by me or under my direction in compliance with the "Corner Recordation Act" (78-22-101, et. seq. M.C.A.).
Alvah F. Hughes
Signature of Surveyor & Seal

Date: 10/31/2006 Reg. No. 7322-LS
Employer: Kootenai Surveyors Inc.

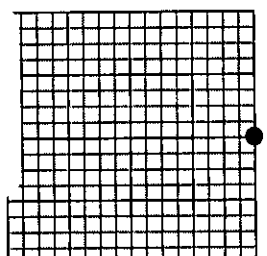
Office of Clerk and Recorder, County of Lincoln This "corner

Sec. 4

record" was filed for record on 200849 BOOK: CCR CC&R'S PAGE: 11050 Pages: 1
was noted on the cross-index p STATE OF MONTANA LINCOLN COUNTY
book No. RECORDED: 02/07/2007 9:07 KOI: CC&R'S
TAMMY D. LAUER CLERK AND RECORDER
FEE: \$0.00 BY: *Jeannie Dennis*
TO: FILED , *Deputy*

Cross Index No. C 13 T. 29N R. 27W P.M., MT

Adopted July 1, 1981, Montana Board of Professional Engineers & Land Surveyors



• corner this sheet