

CERTIFIED CORNER RECORDATION

Corner W 1/16 S4 T 29 N. R. 27 W. P.M.M. Lincoln County

I. Record: None

II. Found: No monuments found during area search.

III. Perpetuation: At the corner point, determined by survey, set a 5/8 ins. diam. steel rebar 24 ins. long, 22 ins. in the ground, with a 1 1/2 ins. diam. Aluminum cap marked as shown below from which:

A fir, 7 ins. diam., bears N. 18° W., 34.10 ft. dist., scribed W 1/16 S4 BT.

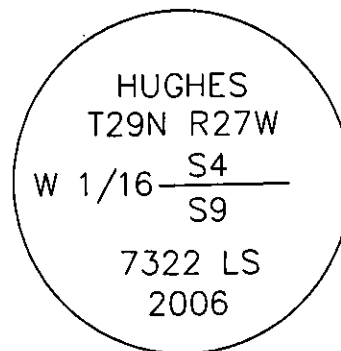
A fir, 6 ins. diam., bears S. 51° W., 19.91 ft. dist., scribed W 1/16 S9 BT.

Painted faces and 6 in. wide red bands to all bearing trees and attached Land Survey Monument and Bearing Tree signs.

Set a steel post on line 3 ft. North of set monument.

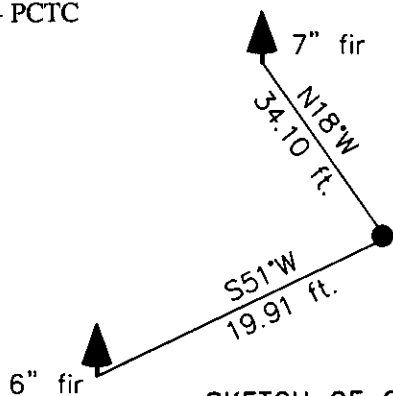
Magnetic declination: 18° East

Equipment used: Hand compass and loggers tape



Kootenai Surveyors Inc., 314 California Av., Libby, MT. 59923 (406) 293-4354

Cross Wolf - PCTC



SKETCH OF CORNER

CERTIFICATION

I, Kelly Rooney
certify the information shown hereof is true and correct.
Kelly Rooney
Signature Ground Party Chief

I, Alvah F. Hughes
certify that this Corner Record correctly represents work performed by me or under my direction in compliance with the "Corner Recordation Act" (70-22-101, et seq., M.C.A.)
Alvah F. Hughes
Signature of Surveyor & Seal: 7322 LS

Date: 11/30/2006 Reg. No. 7322-LS

Employer: Kootenai Surveyors, Inc.

Office of Clerk and Recorder, County of Lincoln. This "corner

record" was filed for rec 200846 BOOK: CCR CC&R'S PAGE: 11047 Pages: 1

was noted on the cross STATE OF MONTANA LINCOLN COUNTY
RECORDED: 02/07/2007 9:05 KOI: CC&R'S

book No. TAMMY D. LAUER CLERK AND RECORDER

FEE: \$0.00

BY: *Tammy D. Lauer*

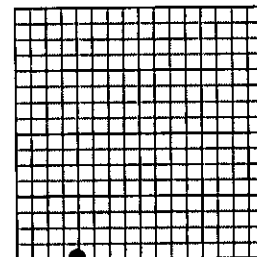
TO: FILED

Cross Index No. E 10 T. 29N R. 27W P.M., MT

Adopted July 1, 1981, Montana Board of Professional Engineers & Land Surveyors

\\Manon\manon-shared\Corner Rec\Cross Wolf PCTC.dwg, 1/2/2007 12:40:33 PM, Konica

Sec. 4



• corner this sheet