

CERTIFIED CORNER RECORDATION

Corner SW Cor. S 9 T 29 N. R. 27 W. P.M.M. LINCOLN County

I. Record: 1902 original GLO survey by P. Bickel, set a trachite stone 18x9x6 ins., 12 ins. in the ground, marked with 4 notches on the S. and E. edges from which:

- A pine, 7 ins. diam., bears N. 26° E. 37 lks. dist. (24.42 ft), mkd. T29N R27W S9 BT.
- A pine, 30 ins. diam., bears S. 72° E. 79 lks. dist. (52.14 ft), mkd. T29N R27W S16 BT.
- A pine, 36 ins. diam. bears S. 44° W. 29 lks. dist. (19.14 ft), mkd. T29N R27W S17 BT.
- A fir, 30 ins. diam., bears N. 35° W. 81 lks. dist. (53.46 ft), mkd. T29N R27W S8 BT.

1965 BLM Remoumentation by Lindenberg: Set an iron post, 30 ins. long, 2 1/2 ins. diam., 26 ins. in the ground, with brass cap mkd. as shown below from which:

- A pine, 12 ins. diam., bears N. 26° E., 37 lks. dist., visible scribes.
- A pine snag, 24 ins., diam., bears S. 72° E., 79 lks., dist., visible scribes.
- A pine snag, 30 ins. diam., bears S. 44° W., 29 lks., dist., visible scribes.
- A fir, 35 ins. diam., bears N. 35° W., 81 lks. dist., with overgrown blaze.
- A pine, 9 ins. diam., bears S. 44° E., 74 lks. dist., mkd. T29N R27W S16 BT.
- A fir, 7 ins. diam., bears S. 11° W., 49 lks. dist., mkd. T29N R27W S17 BT.

II. Found: A 3 1/4 ins. diam. BLM brass cap on a 2 1/2 in. diam. iron pipe firmly set from which:

- A pine stump, bears N. 26° E., 24.42 ft. with visible scribing.
- A fir, 15 ins. diam., bears S. 11° W., 32.34 ft. dist., with overgrown face..
- A pine stump, 36 ins. diam., bears S. 44° W., 19.14 ft. dist., with visible face.
- A fir, 38 ins. diam., bears N. 35° W., 53.46 ft. dist., with visible scribing.

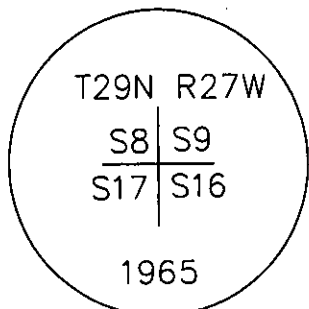
III. Perpetuation: Establish two bearing trees described below:

- A fir, 9 ins. diam., bears N. 9° E., 35.70 ft. dist., mkd. T29N R27W S9 BT.
- A fir, 8 ins. diam., bears S. 81° E., 23.70 ft. dist., mkd. T29N R27W S16 BT.

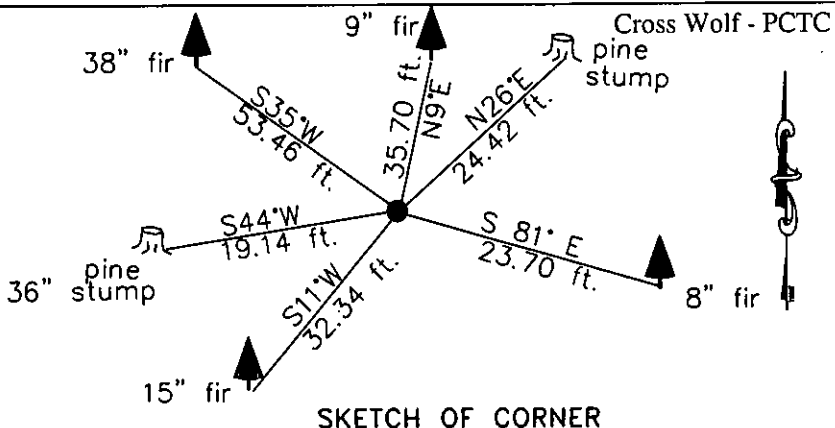
Painted faces and 6 in. wide red bands to all bearing trees and attached Bearing tree and Land Survey Monument signs.

Magnetic declination: 18° East

Equipment used: Hand compass and loggers tape



Kootenai Surveyors Inc., 314 California Av., Libby, MT. 59923 (406) 293-4354



SKETCH OF CORNER

CERTIFICATION

I, Kelly Rooney
certify the information shown herein is true and correct.
Kelly Rooney
Signature Ground Party Chief

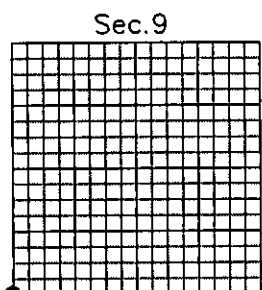
I, Alvah F. Hughes
certify that this Corner Record correctly represents work performed by me or under my direction in compliance with the "Corner Recordation Act" (70/22-101, et seq., M.C.A.)
Alvah F. Hughes
Signature of Surveyor & Seal: **HUGHES**

Date: 10/31/2006 Reg. No. 7322-L3322/L3

Employer: Kootenai Surveyors Inc.

Office of Clerk and Recorder, County of Lincoln. This "corner record" was filed for record 200845 BOOK: CCR CC&R'S PAGE: 11046 Pages: 1 was noted on the cross-inc book No. _____

STATE OF MONTANA LINCOLN COUNTY
RECORDED: 02/07/2007 9:04 KOI: CC&R'S
TAMMY D. LAUER CLERK AND RECORDER
FEE: \$0.00 BY: *Jeanie Lerner*
TO: FILED



Cross Index No. J 09 T. 29N R. 27W P.M., MT

Adopted July 1, 1981, Montana Board of Professional Engineers & Land Surveyors