

CERTIFIED CORNER RECORDATION

Corner W 1/4 S9 T 29 N. R. 27 W. P.M.M. Lincoln County

I. Record: 1902 original GLO survey by Paul S. Bickel: Set a trachite stone 24x10x3 ins. 18 ins. in the ground, marked 1/4 on the W face from which:

A pine, 10 ins. diam., bears N. 57°30' E., 20 lks. dist., (13.20 ft.), mkd. 1/4 S9 BT.
A pine, 10 ins. diam., bears S. 86°45' E., 34 lks. dist., (22.44 ft.), mkd. 1/4 S8 BT.

1965 BLM Remonumentation by D. Lindenberg: Set a iron post, 30 ins. long, 2 1/2 ins. diam., 26 ins. in the ground from which:

A pine, 17 ins. diam., bears S. 86°45' W., 34 lks. dist., mkd. 1/4 S8 BT.
A pine, 16 ins. diam., bears N. 77°15' E., 89 lks. dist., mkd. 1/4 S9 BT.

II. Found:

A pine 22 ins. diam., bears N. 77°15' E., 58.74 ft. dist. with visible scribes.
A pine 25 ins. diam., bears S. 86°45' W. 22.44 ft. dist. with visible scribes.

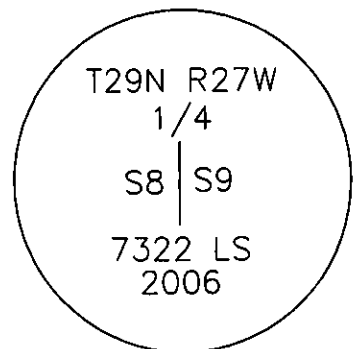
III. Perpetuation: At the corner point, determined by the original bearing trees, set a Aluminum pipe 2 1/2 ins. diam., 30 ins. long 24 ins. in the ground, with a 3 1/4 ins. diam. Aluminum cap marked as shown below from which:

Painted faces and 6 in. wide red bands to all bearing trees and attached Land Survey Monument and Bearing Tree signs.

Raise a collar of stone 2 ft. diam. 6 ins. high around the monument.

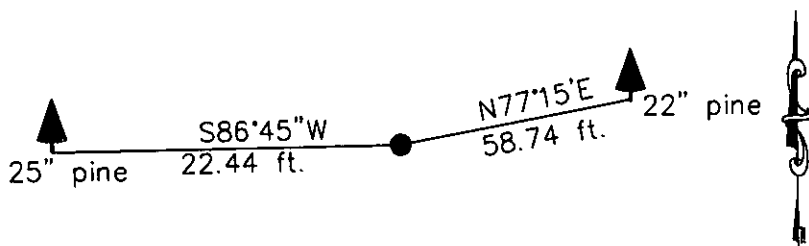
Magnetic declination: 18° East

Equipment used: Hand compass and loggers tape



Kootenai Surveyors Inc., 314 California Av., Libby, MT. 59923 (406) 293-4354

CROSS WOLF- PCTC



SKETCH OF CORNER

CERTIFICATION

I, kelly Rooney
certify the information shown herein is true and correct.

Kelly Rooney
Signature Ground Party Chief

I, Alvah F. Hughes
certify that this Corner Record correctly represents work performed by me or under my direction in compliance with the "Corner Recordation Act" (70-22-101, et seq.)

Alvah F. Hughes
Signature of Surveyor & Seal

Date: 10/31/2006 Reg. No. 7322-LS

Employer: Kootenai Surveyors Inc.

Office of Clerk and Recorder, County of Lincoln. This "corner

Sec. 9

record" was filed for rec: 200841 BOOK: CCR CC&R'S PAGE: 11042 Pages: 1

was noted on the cross: STATE OF MONTANA LINCOLN COUNTY
RECORDED: 02/07/2007 9:00 KOI: CC&R'S

book No. TAMMY D. LAUER CLERK AND RECORDER

FEE: \$0.00

TO: FILED

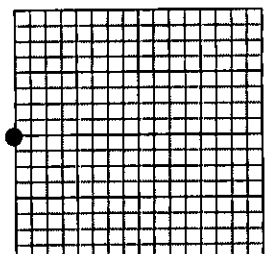
BY: Jeannie Lauer

Deputy

Cross Index No. G 09 T. 29N R. 27W P.M., MT

Adopted July 1, 1981, Montana Board of Professional Engineers & Land Surveyors

\\Manon\manon-shared\CORNER REC\Cross Wolf PCTC.dwg, 1/2/2007 12:36:27 PM, Korica



• corner this sheet