

CERTIFIED CORNER RECORDATION

Corner E 1/4 S10 T 29 N. R. 27 W. P.M.M. Lincoln County

I. Record: 1902 original GLO survey by Paul S. Bickel: Set a trachite stone 20x12x7 ins. 15 ins. in the ground, marked 1/4 on the W. face from which:

A pine, 4 ins. diam., bears S. 30°30' E., 29 lks. dist., (19.14 ft.), mkd. 1/4 S11 BT.
A pine, 10 ins. diam., bears S. 71° W., 32 lks. dist., (21.12 ft.), mkd. 1/4 S10 BT.

II. Found: A trachite stone 15x13x10 ins. 5 ins. above ground firmly set, marked 1/4 on the West face from which :

A pine stump, bears S. 30° E., 19.14 ft. dist. with visible scribes.
A pine stump, 20 ins. diam., bears S. 71° W. 21.12 ft. dist. with no visible scribes.
A steel T post, 1 ins. diam., bears North 0.10 ft. dist., origin unknown.

III. Perpetuation: At the corner point, determined by the original stone monument, set a Aluminum pipe 2 1/2 ins. diam., 30 ins. long 24 ins. in the ground, with a 3 1/4 ins. diam. Aluminum cap marked as shown below from which:

A larch, 9 ins. diam., bears N. 19° E. 43.30 ft. dist. mkd. 1/4 S11 BT.
A larch, 7 ins. diam., bears N. 62° W. 19.05 ft. dist., mkd. 1/4 S10 BT.

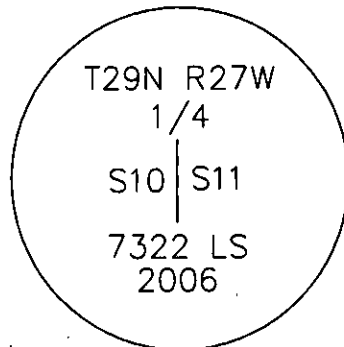
Raise a collar of stone 1 ft. diam. around set monument.

Painted faces and 6 in. wide red bands to all bearing trees and attached Land Survey Monument and Bearing Tree signs.

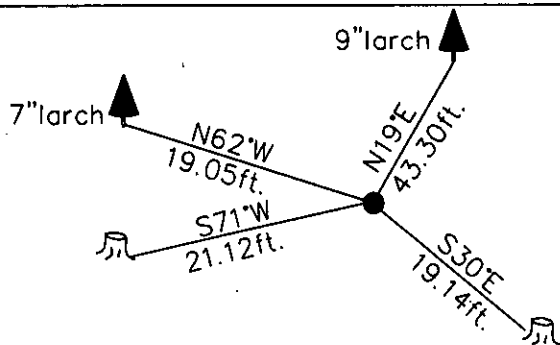
Set a steel post on line 3 ft. North of set monument.

Magnetic declination: 18° East

Equipment used: Hand compass and loggers tape



Kootenai Surveyors Inc., 314 California Av., Libby, MT. 59923 (406) 293-4354



HORSEHILL - PCTC

SKETCH OF CORNER

CERTIFICATION
I, Mike Tester
certify the information shown herein is true and correct.

Alvah F. Hughes
Signature Ground Party Chief

I, Alvah F. Hughes
certify that this Corner correctly represents work performed by me or under my direction in compliance with the "Corner Recordation Act" (70-22-101, et seq., M.C.A.).

Alvah F. Hughes
Signature of Surveyor & Seal

Date: 1/07/2007 Reg. No. 7322-LS

Employer: Kootenai Surveyors

Office of Clerk and Recorder, County of Lincoln This "corner

Sec. 10

record" was filed for record or 200840 BOOK: CCR CC&R'S PAGE: 11041 Pages: 1

was noted on the cross-index STATE OF MONTANA LINCOLN COUNTY

book No. RECORDED: 02/06/2007 3:38 KOI: CC&R'S

TAMMY D. LAUER CLERK AND RECORDER

FEE: \$0.00

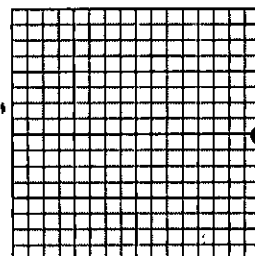
BY: Joanne Lauer

TO: FILED

Cross Index No. G 17 T. 29N R. 27W P.M., MT

Adopted July 1, 1981, Montana Board of Professional Engineers & Land Surveyors

\\Manon\manon-shared\Cornet Rec\Horsehill PCTC.dwg, 1/10/2007 1:47:50 PM, Konica



• corner this sheet